



Community Health Needs Assessment  
**2012-2013 Report**

## Table of Contents

Executive Summary.....	3
Community Defined.....	4
Process .....	9
Primary Research .....	11
Secondary Data.....	18
Prevalence of Chronic Disease Risk Factors.....	18
Leading Causes of Death.....	26
Injury.....	27
Drug and Alcohol .....	32
Maternal and Child Health Indicators .....	32
Teen Pregnancy.....	35
Adolescent Health.....	38
Mental Health.....	39
Prevalence of Infectious Disease.....	40
Environmental Health Risk Indicators .....	41
Public Safety/Domestic Violence .....	44
Dissemination Plan .....	45
Summary of Findings .....	46
Implementation Strategies .....	49
Medical Services .....	51
Appendix .....	53

## **Executive Summary**

As the result of a new federal requirement under the Affordable Care Act, all not-for-profit hospitals are required to conduct a Community Health Needs Assessment (CHNA) every three years in order to maintain its tax-exempt status. The hospital must then use the findings from the CHNA to develop implementation strategies to address identified community needs. The purpose of the CHNA is to ultimately improve community health. The assessment should include the following:

- Definition of the hospital service area, or community
- Identification of partners and individuals who assisted with the CHNA (they should represent broad interests of the community)
- Health data and assessments regarding the health of the community
- Primary research to collect input from the community
- Identification of community health needs
- Dissemination plan to share findings of the CHNA with the community

In 2011, Bothwell Regional Health Center, Katy Trail Community Health and the Pettis County Health Center partnered with the Missouri Hospital Association to conduct a Community Health Needs Assessment. MHA provided a University of Missouri School of Public Health graduate student to conduct the assessment with support from MHA and the University. The resulting report provided a base of secondary data collection, but did not include any primary data collection or implementation strategies needed to complete the assessment. It was also created during a time that little information existed regarding suggested contents and format for the assessment.

A survey in Pettis and Benton counties, the primary service area of Bothwell Regional Health Center, was conducted from October to December 2012. A total of 401 completed surveys were received. The results were summarized with a complete report included in the appendix.

Key findings from both the primary and secondary data indicate needs in access and affordability of health care, healthy behaviors and education, and chronic disease prevalence.

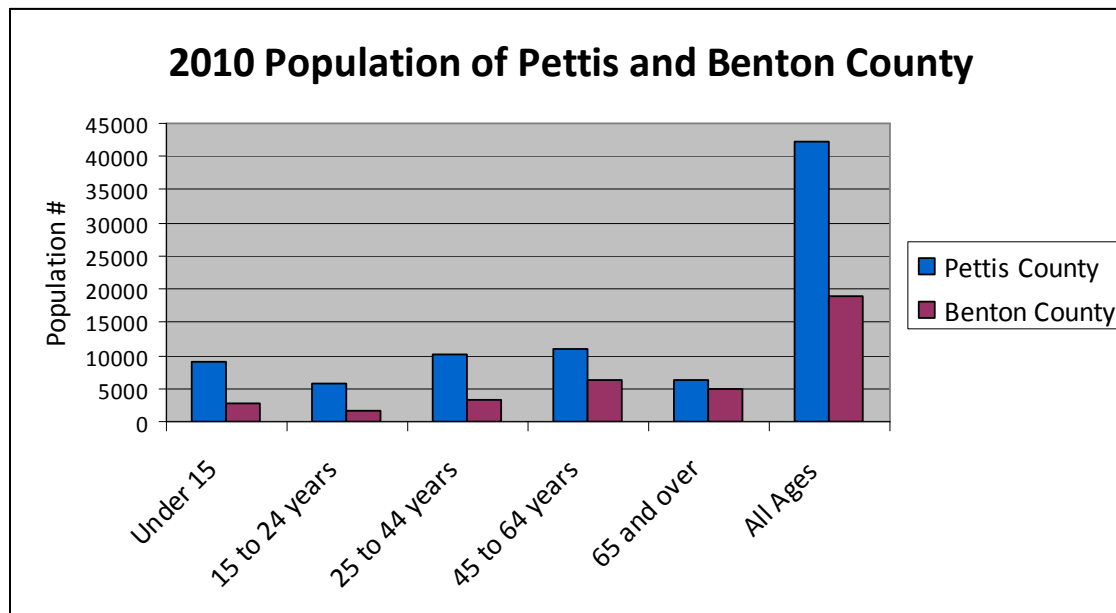
## Community Defined

Bothwell Regional Health Center's primary service area includes Pettis and Benton counties. It also extends into a 40-mile radius that reaches seven contiguous counties. In addition to Benton County, the contiguous counties that comprise the secondary market area include Saline, Johnson, Henry, Moniteau, Morgan and Cooper counties. Specific data was not collected for the secondary market area.

### Demographic/Education/Socio-Specific Economic Indicators

#### Pettis County and Benton County Demographics and Population

##### Population



Source: US Census Bureau

The age distribution of the population for Pettis County is similar to the State of Missouri. The 2011 estimates from the County Health Rankings list the Pettis County population below the age of 18 at 26% compared to 24% for the entire state. The older population of Pettis County (15%) has a similar makeup when compared to the entire state of Missouri (14%). Benton County has a significantly higher population of older adults (25.9%) comparatively as it attracts those seeking a retirement community. To further demonstrate the age differences, Benton County's median age is 51.5 while Pettis County's is 37.1, which more closely matches the state at 37.9.



## Race Description

	<b>Pettis County</b>	<b>Benton County</b>	<b>State of Missouri</b>
<b>White</b>	91.78%	98.43%	84.67%
<b>Black or African American</b>	4.05%	0.50%	12.48%
<b>American Indian and Alaska Native</b>	1.05%	1.49%	1.21%
<b>Asian</b>	0.90%	0.47%	2.06%
<b>Native Hawaiian and Other Pacific Islander</b>	0.14%	0.07%	0.19%
<b>Some Other Race</b>	4.44%	0.44%	1.62%

Source: US Census Bureau, 2010

	<b>Pettis County</b>	<b>Benton County</b>	<b>State of Missouri</b>
<b>Percentage of Population Hispanic or Latino</b>	7.22%	1.53%	3.55%

Source: US Census Bureau, 2010

There is a striking contrast in ethnic diversity among Pettis and Benton counties and the State of Missouri. The population of black residents in Pettis (4%) and Benton (0.5%) is less than the state (12.48%). There is, however, a larger concentration of Hispanic residents in Pettis County (7.2%) than the state (3.5%). Benton County has less ethnic diversity with a reported Hispanic population of 1.5%.

The rate of Hispanic ethnicity has grown steadily in Pettis County from 4.5% in 2002, 6.8% in 2006, to 7.2% in 2010. It is likely the growth of Hispanic population is more than what is documented because many of the immigrants are undocumented or were underreported in the 2010 Census of Missouri, which makes it difficult to obtain an accurate population count. This population makes up the largest group of people with barriers to health care and preventive services. Many people in this population have limited ability to speak or read English, although many of them are able to read Spanish adequately.

### 2010 Demographics and Socio-Economic Factors

	<b>Pettis County</b>	<b>Benton County</b>	<b>State of Missouri</b>
<b>Total Population in 2010</b>	42,201	19,056	5,988,927
<b>Percent of residents over the age of 25 who are a high school graduate or higher</b>	82.2%	81.0%	86.8%
<b>Percent of population that speaks English less than very well</b>	3.5%	0.5%	2.3%
<b>Average household size</b>	2.52	2.28	2.46
<b>Median household income</b>	\$38,669	\$34,512	\$47,202
<b>Percent of population living below poverty level</b>	16.4%	17.8%	14.3%
<b>Percent of children under age 18 in poverty</b>	25.0%	35.0%	21.0%
<b>Total number of people who receive SSI*</b>	677	497	103,926

Source: US Census Bureau

\* Supplemental Security Income is a federal cash assistance program that provides monthly payments to low-income

Both Pettis and Benton counties lag behind the State of Missouri in median household income, and both have higher poverty rates. A major reason for the lower per capita income in Pettis County is due to the high level of manufacturing jobs with 20.7% (with over 1,700 people employed by Tyson Foods, Inc.) compared to 11.8% for the entire state. Furthermore, using 2010 US Census Bureau data, 15.8% of the population in Pettis County, and 12.4% of Benton County, over the age of 25 have a bachelor's degree or higher compared to 24.6% for the State of Missouri. However, there is an indication that education is improving. The County Health Rankings reports a graduation rate of 93% for Pettis County based on 2012 cohort graduation rates collected from state Department of Education websites. Benton and statewide rates remain similar to the Census Bureau statistics for the number of residents over age 25 that are a high school graduate or higher.

Unemployment rates in Pettis County are slightly better than the state average. The Bureau of Labor Statistics placed unemployment rates of Pettis County at 6.2% in November 2012 compared to a state average of 6.7% during the same time period. Benton County's unemployment rate was higher than Pettis County and the state in November 2012 at 7.7%.

The Pettis County Community Partnership (PCCP), counts the homeless population within Pettis County semi-annually in January and July. The January 2012 count showed 74 unsheltered homeless and 44 sheltered homeless. Accurate figures are not available for Benton County since it lacks an agency to lead the homeless count.

## **Community Characteristics**

Bothwell Regional Health Center serves an area diverse in agriculture and manufacturing industries. Pettis County includes State Fair Community College, which has programs in nursing, radiologic technology, dental hygiene, occupational therapy assistant, health care specialist with emphasis in nurse aide and pharmacy technology programs, and health information technology. Tourism in Pettis County is driven by the presence of the Missouri State Fair which hosts about 400,000 visitors during the annual event each August. Additionally, the fairgrounds is the venue for many events throughout the year. The Katy Trail and Sedalia's annual Scott Joplin festival attract visitors to the community as well.

Located on U.S. Highways 50 and 65, Pettis County enjoys the comforts of rural communities with urban life and the Lake of the Ozarks within an hour's drive. It is a community rich in arts and entertainment with the Daum Museum of Contemporary Art housed on the campus of State Fair Community College and the Liberty Center for the Arts located in downtown Sedalia. The community boasts a healthy parks system in Sedalia with seven parks, two outdoor aquatic centers, walking trails and a skate park.

A spirit of giving runs deep in Pettis County. Beginning with its foundation, Sedalia has been home to folks who know the importance of giving back to the community. Even Bothwell, which opened in 1930, was the result of an effort by John Homer Bothwell to build a hospital in Sedalia. He pledged \$150,000 in seed money and encouraged the community to also support the project. The community has strong foundations benefitting education and health care, a United Way organization that allocates more than a half-million dollars to community agencies each year and Open Door Ministries, which serves as a food pantry, thrift shop and financial assistant to low-income families.

In Benton County, Truman Lake and the Harry S. Truman Dam and Reservoir Visitor Center attract many visitors. The amenities attract many retirees. Currently, Harbor Village—a project of Katy Trail Community Health, Friends of the Warsaw Senior Center, and Pathways Community Behavioral Health—is a 24,800 square-foot facility that will house multiple health and social services. These services will include personal care manager, meals, adult care programs, recreational and educational programming for adults, wellness programs, financial and insurance assistance, and an entrepreneurial business center.

## **Other Health Services**

In addition to Bothwell Regional Health Center, Pettis County is served by Katy Trail Community Health, a federally qualified health center, the Pettis County Health Center and several private practice providers. Specialty care available in Sedalia includes, cardiology, obstetrics/gynecology, ear/nose/throat, orthopedics, general surgery, neurology, oncology (hematology and radiation), pain management, sleep

medicine, urology and podiatry. Several privately owned therapy/rehab treatment centers are available as well as a private diagnostic center.

In Benton County, Bothwell Health Center-Truman Lake offers primary care, therapy, women's health and radiology services. The Benton County-Warsaw area is also served by Katy Trail Community Health, a Golden Valley Memorial Healthcare primary care clinic and the Benton County Health Department.

Access to primary care and dental services is an issue for both Pettis and Benton counties and is clearly demonstrated by the 2013 Robert Wood Johnson Foundation County Health Rankings. There are about 36 percent more people covered by one primary care physician in Pettis and Benton than the state average. That gap widens to about 55 percent compared to the national benchmark of 1,067 lives to every one primary care physician. The picture is starker in regards to access to dental services in Benton County where there is one dentist for every 6,451 people in the county, about 66 percent higher than the rest of the state.

	Missouri	Benton	Pettis
Clinical Care (rank out of 115 MO counties)		87	91
Uninsured	15%	20%	20%
Primary care physicians	1,495:1	2,389:1	2,348:1
Dentists	2,168:1	6,451:1	2,695:1
Preventable hospital stays	73	85	90
Diabetic screening	85%	85%	79%
Mammography screening	64%	58%	60%

Source: RWJF County Health Rankings, 2013

Both regions are designated by the U.S. Department of Health and Human Services as a Health Professional Shortage Areas (HPSAs), which means shortages of primary medical care, dental or mental health providers. Benton County is also classified as a Medically Underserved Area, meaning there are too few primary care providers, high infant mortality, high poverty and/or high elderly population.

## Process

In 2011, Bothwell Regional Health Center, Katy Trail Community Health and the Pettis County Health Center partnered with the Missouri Hospital Association to conduct a Community Health Needs Assessment. MHA provided a University of Missouri School of Public Health graduate student to conduct the assessment with support from MHA and the University. The resulting report provided a base of secondary data collection, but did not include any primary data collection or implementation strategies needed to complete the assessment. It was also created during a time that little information existed regarding suggested contents and format for the assessment. The following people offered direction or assisted with compiling information for the assessment:

Name	Position	Organization
Sarah Nail	Community Outreach Coordinator	Bothwell Regional Health Center
Connie Patterson	Communications Coordinator	Bothwell Regional Health Center
Lisa Church	Director, Marketing & Communications	Bothwell Regional Health Center
Chris Stewart	Executive Director	Katy Trail Community Health
JoAnn Martin	Administrator	Pettis County Health Center
Saundra Overton	CNO/CQI Director	Royal Oaks Hospital/ Pathways Community Health
Erica Jenkins	CQI Coordinator	Royal Oaks Hospital/ Pathways Community Health
JaEllen Hickman	Director, CQI	Bothwell Regional Health Center
Sandra Hewlett	Director of Oncology	Bothwell Regional Health Center
Steve Davis	Director, Budget & Reimbursement	Bothwell Regional Health Center
Celia Roasch	R.N., Infection Control	Bothwell Regional Health Center
Natalie Newville	Housing Case Manager	Pettis County Community Partnership
Tammy Drum	Benton County Services Director	Care Connection for Aging
Courtney Anstine	Pettis County Services Director	Care Connection for Aging
Manny Rodriguez	Pastor	Amigos de Cristo Lutheran Church
Jenny Butterfield	Masters of Public Health Intern	University of Missouri
Alex Denning	Masters of Public Health Intern	University of Missouri

### Secondary Data

The secondary data contained in the 2011 report has been updated to reflect the most current information available. Sources used in the collection of secondary data are as follows:

- U.S. Census Bureau
- Missouri Department of Health and Senior Services
- Centers for Disease Control and Prevention

- U.S. Bureau of Labor Statistics
- University of Wisconsin's/Robert Wood Johnson Foundation County Health Rankings
- Missouri Kids Count Data Center
- Missouri Hospital Association
- Pettis County Community Partnership
- Royal Oaks Hospital Community Needs Assessment

## **Primary Research**

Primary research is required to meet the IRS guidelines for community health needs assessments. A wide-based community survey was last conducted by the Pettis County Health Center in 2007. A public survey provides information about behaviors and opinions from a sample of the population. It was determined that a public survey would be important to the assessment process because it:

- Provides an opportunity to capture information from those who may not access the health-care system.
- Gives a comparison from self-reported incidences and prevalence established from secondary data sources.
- Gauges perceptions and perceived gaps.
- Builds a consensus regarding issues and opportunities.
- Provides timely, direct feedback.

## **Identify and Prioritize Community Health Needs**

Community needs were determined based on priorities identified by the community through primary research, and by looking at the most critical health issues found through the secondary research compared with state and national trends.

# **Primary Research**

## **Survey Layout and Design**

The Community Health Needs Assessment Survey was a questionnaire-style survey designed from a template provided by the Missouri Hospital Association. The 47-question survey had three sections: health behaviors, medical care and services, and demographics. All questions, with the exception of one, were multiple choice or yes/no. One open ended question was used to identify gaps, "What health or community services should Bothwell Regional Health Center provide that are currently not available?" The demographic section was placed at the end of the survey to head off any barriers respondents may have felt to answer questions about income, age and insurance status.

## **Methodology**

The survey was available online at brhc.org along with paper copies that were widely distributed throughout Pettis and Benton counties. The survey period was October to December 2012. In order to incentivize participation, respondents were entered into a drawing for a \$100 Visa gift card. A total of 401 completed surveys were received. Paper surveys were entered into the same online survey services used to collect online responses to more easily analyze results. Paper surveys were distributed to the following locations:

- Bothwell Regional Health Center
- Bothwell Family Health
- Bothwell OB/GYN
- Bothwell Health Center-Truman Lake
- Bothwell Regional Health Center Cole Camp Clinic
- Katy Trail Community Health
- Pettis County Health Center
- Pettis County Community Partnership
- Sedalia Senior Center
- Warsaw Senior Center
- Sedalia Housing Authority
- Benton County Health Department
- Amigos de Cristo Lutheran Church

Underserved populations were targeted through distribution at the Pettis County Partnership, Sedalia Housing Authority, senior centers and Amigos de Cristo Lutheran Church. The survey was translated into Spanish and distributed to Amigos de Cristo

and Katy Trail Community Health. However, no completed surveys were returned to Amigos de Cristo and eight surveys were completed at Katy Trail Community Health (six Hispanic respondents and two Russian/Ukrainian respondents).

Many tactics were used to make the public aware of the opportunity to participate. They included:

- Press release, which generated a newspaper article
- Radio Public Service Announcements
- Information broadcast during a morning radio program on KDRO
- Flyers promoting the \$100 gift card drawing were posted at all distribution locations
- Publication of information in two Bothwell employee newsletters
- Article in the Fall 2012 consumer newsletter mailed to 11,300 homes within a 35-mile radius of Bothwell, including all of Pettis and Benton counties
- Social media promotions

## **Participants**

### **Key Characteristics**

- 78.4% women
- 60% Sedalia residents, 14% Warsaw residents
- 33.2% ages 25-44
- Race: 97.1% White, 2.1% Black
- Ethnicity: 3.9% Hispanic, 1.6% Ukrainian/Russian
- Insurance coverage: 62.1% employer plan, 30% Medicare, 15.4% Medicaid
- 22.7% high school graduates, 23.7% have a 2-year college degree
- 49.1% had a combined annual household income of \$20,000 to \$59,999, 16.2% had a combined annual household income of less than \$20,000
- 76.4% were homeowners, 18.3% were renters
- 43% have children in the household



## Summary of Findings

### Health Behaviors

Have you ever been told by a doctor you had high blood pressure?		
	Percent	Count
Yes	39.2%	157
No	60.8%	244

Have you ever been told by a doctor you should lose weight for health reasons?		
	Percent	Count
Yes	39.3%	157
No	60.8%	243

Of the respondents who reported being diagnosed with high blood pressure, 79% said medication is prescribed to treat the condition. Interestingly, the number of people who report their doctor has told them to lose weight mirrors those who have high blood pressure. Obesity is one of the leading causes of high blood pressure.

Are you currently trying to lose weight?		
	Percent	Count
Yes	58.8%	233
No	41.2%	163

During the past month have you participated in any physical activities?		
	Percent	Count
Yes	77.2%	308
No	22.8%	91

The majority of respondents (62.2%) who indicated that they were trying to lose weight were attempting to do so by both eating fewer calories and increasing physical activity.

Have you smoked more than 100 cigarettes in your life?		
	Percent	Count
Yes	43.7%	173
No	56.3%	223

Do you smoke now?		
	Percent	Count
Yes	16.2%	64
No	83.8%	332

Even though a large percentage of respondents (43.7%) have smoked, 27.5% have quit smoking. The smoking rate from the primary research (16.2%) is much lower than the most recent Behavioral Risk Factor Surveillance System (BRFSS) study by the Centers for Disease Control and Prevention (29%), the rate used in county health rankings. According to survey results, age 17 was the average age smokers began smoking regularly.

Have you ever been told by the doctor that you have one of the following conditions?		
Adult asthma	6.6%	26
Angina or coronary artery disease	2%	8
Bacterial pneumonia	2.8%	11
CHF (congestive heart failure)	2%	8
Diabetes or high blood sugar	12.6%	50
Heart attack	3.3%	13
Stroke	2.3%	9
High cholesterol	30.3%	120
Hypertension	29.3%	116
COPD	2.3%	9
Cancer	10.4%	41

The most prevalent conditions reported were high cholesterol and hypertension. However, small percentages of respondents had more serious issues such as a heart attack or stroke. The majority of the cancer cases were breast (9), cervical (6), and skin/melanoma (6).

### Medical Care and Services

How long has it been since you last visited a doctor for a routine check up?		
	Percent	Count
Within past year	74.1%	292
Within 2 years	11.2%	44
Within past 5 years	4.8%	19
5 or more years	5.1%	20
Never	4.8%	19

The majority of those who never had a routine check-up, or it was more than two years ago, said they didn't have a medical condition that required care but did receive health screenings from another provider (32.8%). The same number of people (32.8%) doesn't routinely receive any health screenings. Nearly 30 percent indicated that they didn't go to the doctor because they couldn't afford the payments, regardless of insurance status.

The largest gaps in finding a provider largely involved dental work, mental health and specialty care. About 22 percent reported they had difficulty finding a specialty doctor. The main reasons participants cited for being

unable to visit a specialist when they needed one was there was not a specialist available in this area (60.5%) and they couldn't afford to pay (23.3%).

If difficulty finding a specialist, what kind were you seeking?		
	Percent	Count
Bone and joint (ortho)	27.9%	24
Diabetes (endocrinologist)	17.4%	15
Children's (pediatrics)	10.5%	9
Heart (cardiologist)	9.3%	8
Dermatologist	9.3%	8
Nerve and brain (neurologist)	9.3%	8
Mental health	9.3%	8
Dentist	7%	6
Rheumatologist	4.7%	4
Lung and breathing (pulmonologist)	4.7%	4
Women's Health (OB/GYN)	4.7%	4

Do you have a dentist you can see?		
	Percent	Count
Yes	84.8%	334
No	15.2%	60

Do you have a substance abuse counselor you can see?		
	Percent	Count
Yes	27.4%	108
No	72.6%	286

Do you have a mental health specialist you can see?		
	Percent	Count
Yes	37.6%	148
No	62.4%	246

Nearly 14 percent reported that they or a member of their household had difficulty finding a doctor within the past two years. Here's why they said they had trouble:

Couldn't get a convenient appointment	16.7%	9
Didn't know how to get in contact with one	9.3%	5
Doctor was not taking new patients	59.3%	32
No transportation	1.9%	1
Would not accept your insurance	24.1%	13

Survey participants indicated that they don't routinely receive cancer screenings. This trend would confirm a trend that a vast majority of the cancer diagnoses at the Bothwell Cancer Center are in late stages.

- 52.1% have never had an exam or screening for colon cancer
- 30.2% of women never had a mammogram (67.1% did have a breast exam performed by a doctor or nurse)
- 53.3% had a Pap Smear within the past year

Some of the most valuable information revealed in a public survey is the perceived community needs.

What medical services are most needed in your community?	
Adult primary care services	45.1%
Emergency/trauma care	28%
Alcohol and drug abuse treatment	27.2%
Counseling/mental health services	26.4%
Cancer treatment	21.2%
Diabetes care	21%
Heart care services	18.1%
Women's services	15%
Orthopedic care	14.5%
Pediatric services	13.7%

Even though the majority of respondents who said they or a member of their household experienced first-hand difficulty finding a specialist were seeking orthopedic care, the specialty ranked ninth in this question about needed medical services.

Cost of health care emerged among the chief concerns of survey participants as ability to pay. This along with cost and lack of health insurance were three of the top four problems identified. Health behaviors also ranked high with adult and child obesity, smoking, lack of physical activity and drug use ranking in the top 10 most pressing community health issues.

What do you think are the most pressing health problems in your community?	
Ability to pay for care	67.9%
Cost of health care	56.7%
Obesity in adults	55.2%
Lack of health insurance	52.3%
Obesity in children and teenagers	46.9%
Drug abuse-illegal substances	43.8%
Tobacco use/smoking among adults	40.7%
Lack of physical activity	38.3%
Prescription medication too expensive	37%
Tobacco use/smoking among teenagers	35.2%
Cancer	32.1%
Lack of dental care	30.6%
Drug abuse-prescription medications	29.5%
Alcohol-dependency or abuse	27.5%
Heart disease	26.7%
Teen pregnancy	25.9%
Lack of transportation to health care services	21.2%
Mental health	18.9%
Alcohol-underage binge or abuse	13.5%
Domestic violence	12.2%
Child abuse	9.8%
Lack of prenatal care	5.4%

Health education services of interest mirrored the identified health problems with diet and/or exercise, stress management and smoking making the top three.

Please select the type(s) of health education services most needed in your community?	
Diet and/or exercise	54.1%
Stress management	41.2%
Smoking cessation and/or prevention	37.3%
Cancer screening	35.2%
Diabetes	34.2%
Drug abuse	33.2%
Alcohol abuse	32.9%
Child abuse/family violence	25.9%
Sexually transmitted diseases	24.4%
Alzheimer's disease	20.7%
Asthma	10.4%
HIV/AIDS	8.5%

## Secondary Data

### Prevalence of Chronic Disease Risk Factors

#### Behavioral Risk Factors

Using the County Health Rankings data, 29 percent of residents of Pettis County were found to have a body mass index (BMI) greater than 30, which is less than the state and similar to both Benton and Saline counties. Currently 33 percent of residents in Pettis County reported having no leisure physical activity.

Ninety-four percent of residents in Pettis County had access to healthy food, which is in line with the state. (Per the Missouri Department of Health & Senior Services, this data should not be compared with prior years due to changes in definition.)

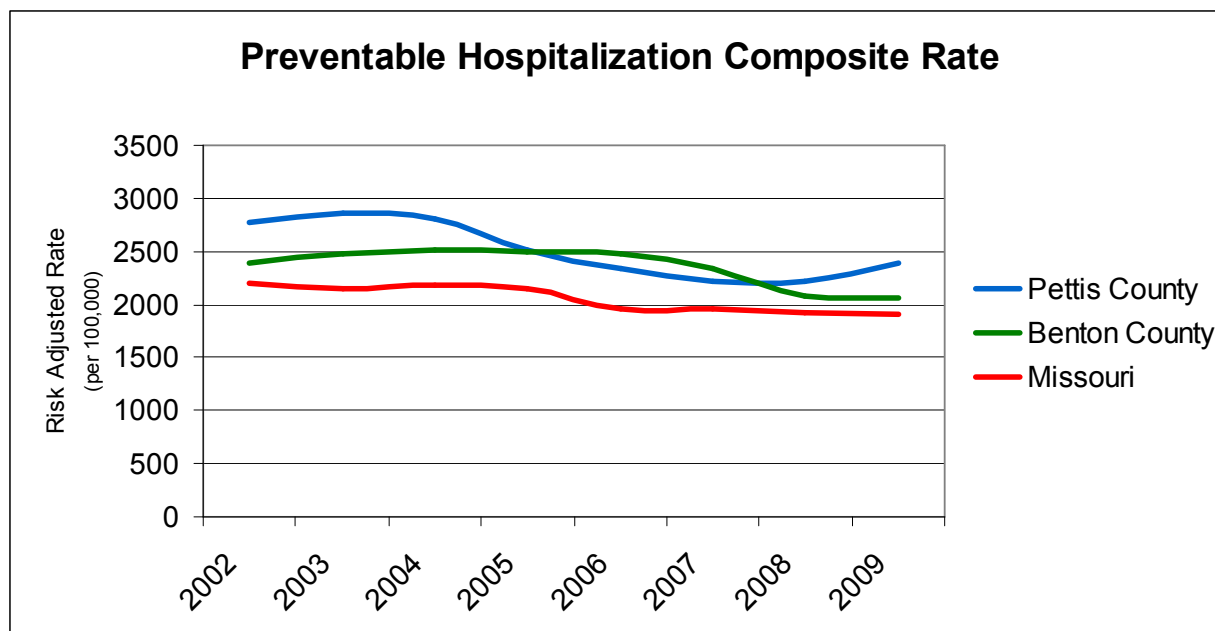
Pettis County has continued to have smoking rates higher than the state average. According to County Health Rankings, Pettis County had a 29 percent smoking rate compared to 23 percent for the entire state. Smoking rates for Benton County at 21% are slightly lower than the state. Results from the 2011 Missouri Information for Community Assessment (MICA) County Level Study indicated health literacy improvements as Pettis County participants reported knowing better the dangers of smoking compared to results in 2007:

<b>Believe smoking can cause:</b>	<b>2007</b>	<b>2011</b>
A heart attack	76%	86.5%
Colon cancer	36.9%	58.8%
Stroke	73.7%	84.2%
Low birth weight	84.4%	92.1%
Impotence	50.4%	69%

Source: MICA County Level Study

#### Preventable Hospitalization

Prevention Quality Indicators (PQIs) looks at ambulatory care-sensitive conditions. The composite rate includes 12 measures (nine chronic and three acute). These quality indicators are based on hospital inpatient date, but they also provide insight into services available outside the hospital setting and may identify opportunities to prevent complications, reduce disease severity and control health care costs, according to the Missouri Hospital Association.



Source: Hospital Industry Data Institute discharge data, Missouri Hospital Association, 2010

Pettis and Benton Counties have higher preventable hospitalization rates when compared to the rest of the state of Missouri. However, progress is being made to reduce the preventable hospitalization rates. In 2009, Pettis County had an 18% drop and Benton County dropped 15% for preventable hospitalizations from 2003.

#### Preventable Hospitalizations, Pettis County

County Count by Prevention Quality Indicators	2003	2009	State
<b>Chronic Conditions</b>			
Diabetes-Short Term Complications	67.6	99.8	63.4
Diabetes- Long Term Complications	137.6	107.2	115.3
Diabetes-Uncontrolled	48.8	21.3	21.6
Perforated appendix	0.33	0.29	0.32
Chronic Obstructive Pulmonary Disease	507.1	462.7	263.8
Adult Asthma	191.9	282.8	110.5
Hypertension	61.9	60.6	64.6
Congestive Heart Failure	617.5	375	438.1
Angina	40.7	26.1	21.3
<b>Acute Conditions</b>			
Dehydration	220	146	115.6
Bacterial pneumonia	746.1	575.1	423.8
Urinary infection	209.1	224.2	192.7

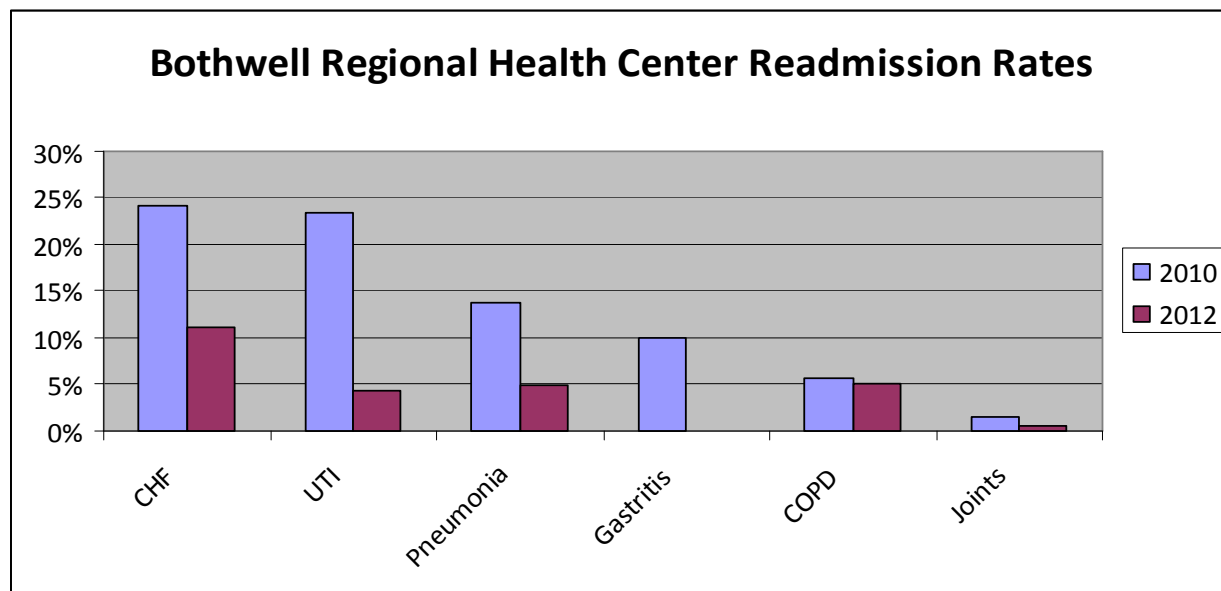
\*Risk-adjusted rate per 100,000 (Data from the Missouri Hospital Association, 2010)

## Preventable Hospitalizations, Benton

County Count by Prevention Quality Indicators	2003	2009	State
<b>Chronic Conditions</b>			
Diabetes-Short Term Complications	139.9	142.6	63.4
Diabetes- Long Term Complications	112.2	86.7	115.3
Diabetes-Uncontrolled	11.5	10.9	21.6
Perforated appendix	.24	.54	0.32
Chronic Obstructive Pulmonary Disease	386.5	383.5	263.8
Adult Asthma	98.9	208.6	110.5
Hypertension	37.8	66.2	64.6
Congestive Heart Failure	504.2	341.5	438.1
Angina	46.3	29.3	21.3
<b>Acute Conditions</b>			
Dehydration	268.1	95.5	115.6
Bacterial pneumonia	659.3	537.7	423.8
Urinary infection	182.0	151.2	192.7

\*Risk-adjusted rate per 100,000 (Data from the Missouri Hospital Association, 2010)

## Readmission Rates



Source: Bothwell Regional Health Center

Since 2010, Pettis County has seen improvement in the number of hospital readmission rates. The dramatic improvements in readmissions could be due to Project Re-Engineered Discharge (RED), Comprehensive Unite-based Safety Program Catheter-Associated Urinary Tract Infections (CUSP/CAUTI) and other efforts made by Bothwell Regional Health Center.



Bothwell Regional Health Center was recognized by the American Hospital Association and the Health Research and Educational Trust for its success with decreasing hospital readmissions. Project RED aims to improve the hospital discharge process and reduce readmission rates for patients with congestive heart failure. Project RED is one of the largest quality improvement initiatives ever undertaken by the Centers for Medicare and Medicaid Services.

Bothwell was also recognized by the Missouri Center for Patient Safety for reducing catheter-associated urinary tract infections (CAUTI) rates and for 100 percent data submission for the Comprehensive Unit-based Safety Program (CUSP)/Stop CAUTI collaborative project.

According to the Center for Disease Control and Prevention, the average length of stay in hospitals was 4.8 days in the United States in 2010. Bothwell has roughly the same average at 4.775 days. From January to April 2013, the average length of stay at Bothwell was 4.47 days for Medicare patients and 4.19 days for other patients.

### Emergency Department Diagnosis

Listed below are the top visits for 2010 to Bothwell Regional Health Center Emergency Department broken down by sex and age.

Diagnosis	Total	Female	Male	Ped	Teen	Adult	Geriatric
<b>Urinary Tract Infection</b>	538	468	70	52	25	325	136
<b>Acute Upper Respiratory Infection</b>	463	279	184	222	20	202	18
<b>Otitis Media (ear ache)</b>	457	236	222	346	9	95	7
<b>Bronchitis</b>	405	242	163	37	13	297	58
<b>Dental Disorder</b>	400	210	190	4	5	388	3
<b>Headache/Migraine</b>	371	289	82	8	19	326	18
<b>Chest Pain</b>	292	147	145	4	8	217	63
<b>Acute Pharyngitis (sore throat)</b>	214	122	92	67	33	112	2
<b>Lumbago</b>	195	110	85	1	5	161	28
<b>Painful Respiration</b>	194	102	92	4	8	158	24
<b>Acute Bronchitis</b>	175	95	80	22	6	130	17
<b>Sprain of Ankle</b>	174	113	61	27	21	118	8

Bothwell Regional Health Center is the only emergency department in Pettis and Benton Counties. There were 24,848 total visits to the Emergency Department in 2012. About 10 percent of patients seen in the Emergency Department were admitted to the hospital for treatment.

2012	Total Visits	Total Admits from ED
Jan	2056	265
Feb	1894	216
Mar	2074	247
Apr	1916	210
May	2112	215
June	1992	194
July	2122	226
Aug	2185	221
Sept	2201	200
Oct	2118	219
Nov	1893	191
Dec	2285	236

## Chronic Disease

Chronic diseases are among the most common, costly, and preventable of all health problems in the nation, according to the Centers for Disease Control and Prevention. Four modifiable health risk behaviors—lack of physical activity, poor nutrition, tobacco use, and excessive alcohol consumption—are responsible for much of the illness, suffering, and early death related to chronic diseases, the CDC reports.

Chronic Disease Comparisons Profile	Pettis	Benton	State	Variance
Heart Disease-Death	226.9	232.6	245.6	L
Heart Disease-Hospitalizations	186.3	176.4	152.38	H
Heart Disease- ED Visits	11	9.8	12.95	L
Ischemic Heart Disease-Deaths	138.7	147.0	170.32	L
Ischemic Heart Disease-Hospitalizations	77.1	73.1	55.25	H
Prostate Cancer-Hospitalizations	3.9	3.0	2.78	H
COPD-Hospitalizations	35.2	29.2	23.22	H
COPD-ED Visits	10.9	7.6	5.41	H
Asthma-ER Visits	4.2	3.7	5.12	L
Arthritis/Lupus-ED Visits	7.2	5.7	8.67	L
*Exposure to secondhand smoke in home	24.2	27.8	15.6	H
Acute Stroke-Hospitalization	25	23.6	22.81	H
Ischemic Stroke-Hospitalizations	20.9	20.3	19.03	N/S
Transient ischemic attack-Hospitalizations	4.7	5.8	5.84	L
ED Visits: Diabetes as the principal or a secondary diagnosis	32.7	24	22.75	L
Hospitalizations: Diabetes as the principal or a secondary diagnosis	261.8	257.5	274.0	L

Source: Missouri Department of Health and Senior Services, MICA, 2009

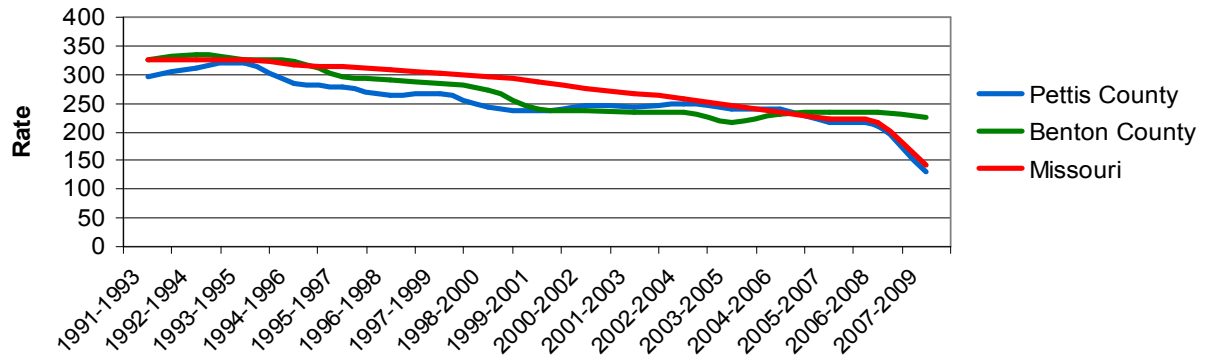
\*2011 data

Death rates are per year per 100,000 population and are age-adjusted to the U.S. 2000 standard population.

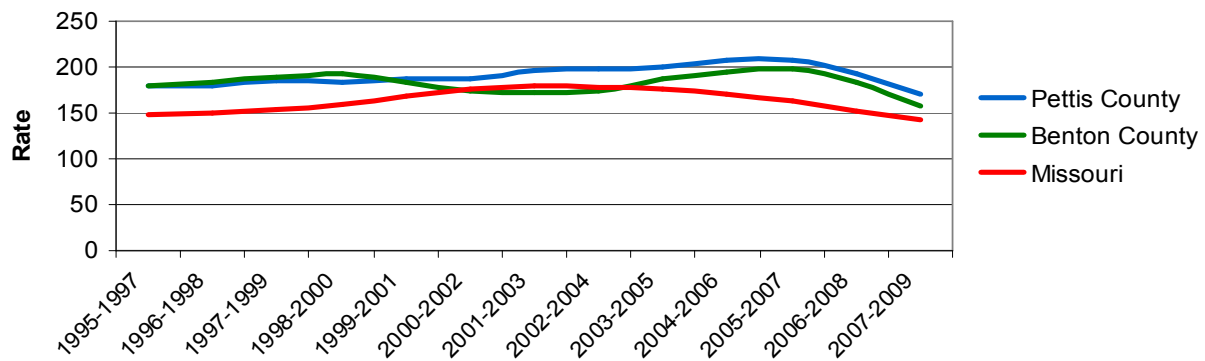
Hospitalization rates are per year per 10,000 population and are age-adjusted to the U.S. 2000 standard population.

ER Visit rates are per year per 1000 population and are age-adjusted to the U.S. 2000 standard population.

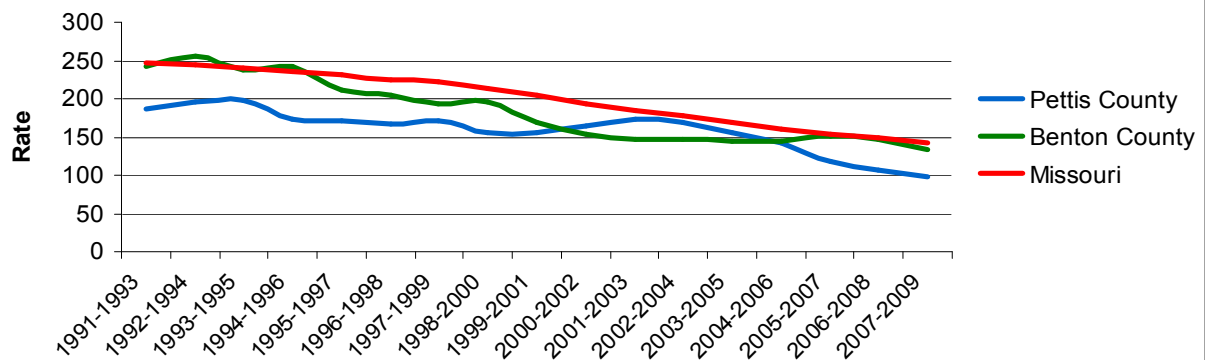
## Heart Disease: Death



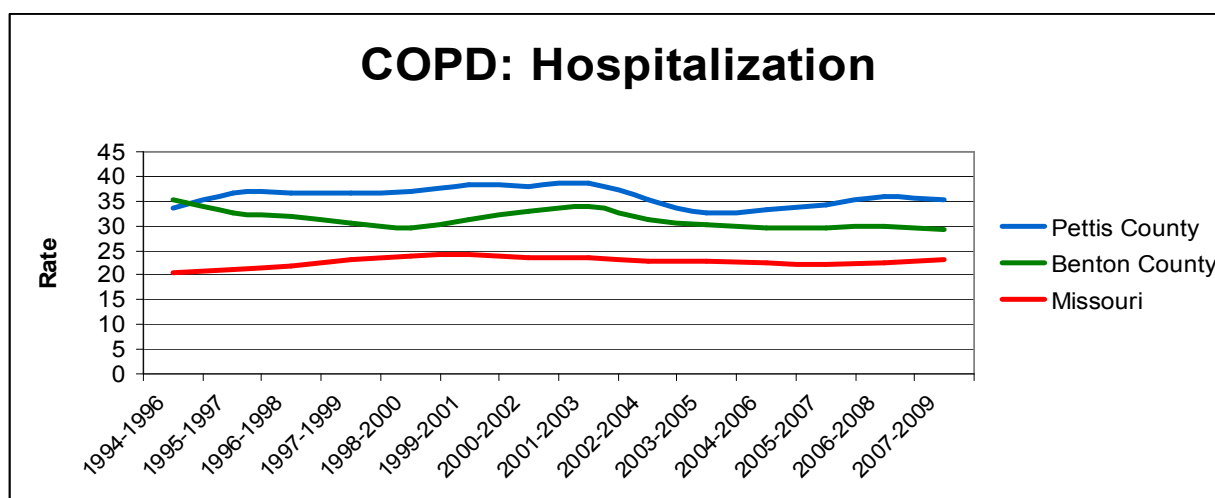
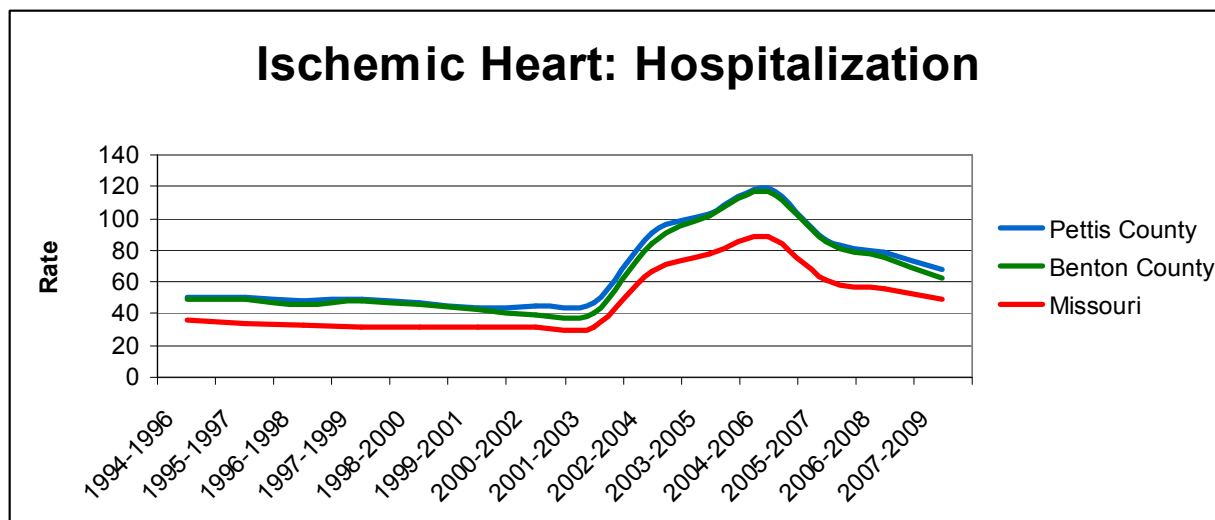
## Heart Disease: Hospitalization



## Ischemic Heart: Deaths

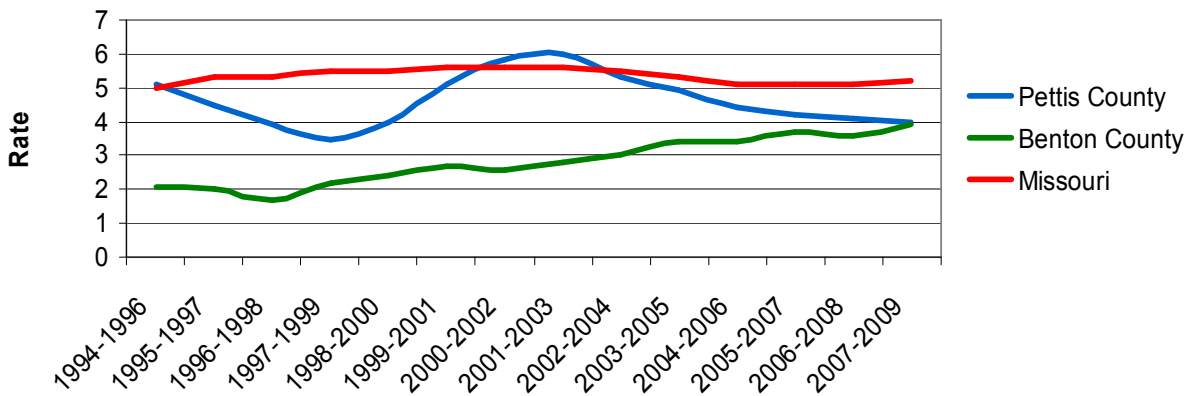


Source: Missouri Department Health & Senior Services MICA

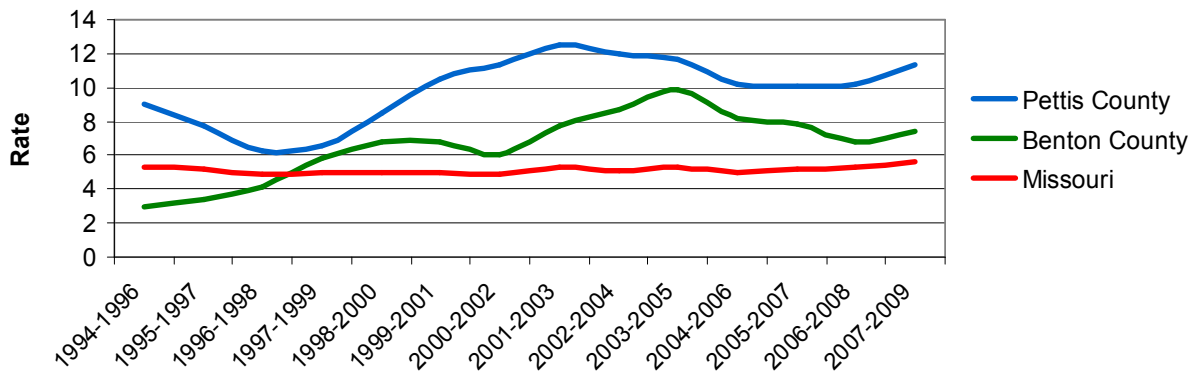


Source: Missouri Department Health & Senior Services MICA

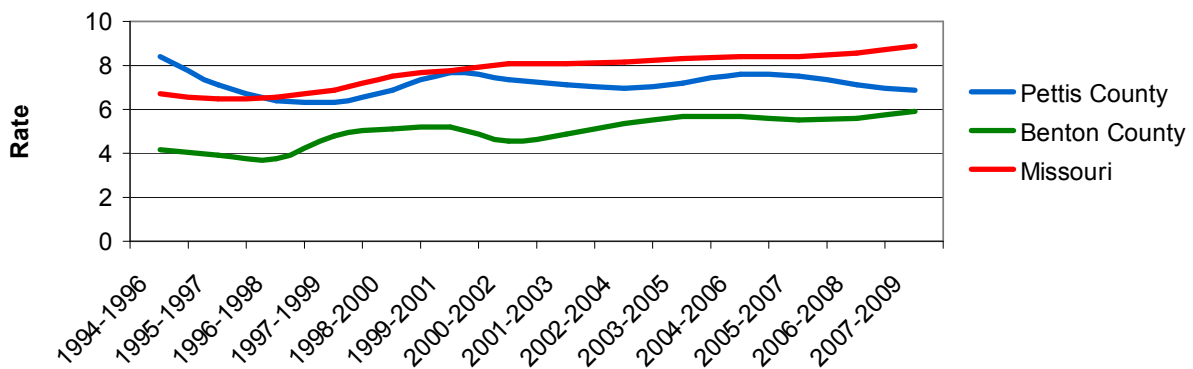
## Asthma: ED Visits



## COPD: ED Visits



## Arthritis / Lupus: ED Visits



Source: Missouri Department Health & Senior Services MICA

## **Leading Causes of Death**

The Missouri Department of Health and Senior Services reported a life expectancy of 77.1 years in Pettis County, 18 months less than the US average of 78.7 years (CDC, 2010). According to the Missouri Department of Health and Senior Services, the top 10 causes of death for Missouri were heart disease, cancer, stroke, chronic lower respiratory disease, accidents, diabetes, influenza and pneumonia, Alzheimer's disease, kidney disease and suicide in 2011. Pettis and Benton counties share the same leading causes of death with the rest of the state. Cancer and COPD deaths in Benton County are higher than the state rates.

### **Top Causes of Death (1999-2009)**

	<b>Pettis</b>	<b>Benton</b>	<b>Missouri</b>
Heart Disease	226.9	232.6	245.6
Cancer	210.3	230	197.7
Stroke/ Other Cerebrovascular Disease	54.5	62.1	54.92
Chronic Lower Respiratory Disease (COPD)	49.9	66	48.67
Unintentional Injuries	45.6	53.9	44.97

Source: Missouri Department Health & Senior Services MICA

Mortality rates are per year per 100,000 population

Previous community assessments have shown that cancer deaths and kidney disease deaths had a high variance when comparing Pettis County to the entire state. Pettis County has improved in these numbers from the 1996-2006 data, when the county rate was 224.4 for cancer death and a 20.1 rate for kidney disease death. The 1999-2009 data has shown a 210.3 rate of cancer death and a 17.8 rate of kidney disease death for Pettis County. State rates for 1999-2009 for cancer death were 197.7 and 17.2 for kidney disease death. However, data from Bothwell Regional Health Center show that most of those who are diagnosed with cancer are usually identified in the late stages (III and IV). Preventative health services or early stage detection would have an impact on the death rate for cancer. Noted below, data from the Missouri Cancer registry shows that many individuals who are diagnosed with cancer have invasive cancer compared to an early stage diagnosis. This high rate, when compared to the state as a whole, shows correlation between late diagnosis and high levels of cancer deaths.

## **Cancer**

The vast majority of cancer diagnoses at Bothwell's Cancer Center are diagnosed in stage III or IV.

Bothwell's Cancer Center diagnosed in calendar year 2012, 413 new cancer cases. About 75 percent of the 413 patients receive treatment at Bothwell Regional Health Center, and 25 percent migrate out to other facilities.

	<b>Pettis County</b>	<b>Benton County</b>	<b>Missouri</b>
<b>All Stages of Cancer</b>	505.5	556.4	492.8
<b>Invasive Cancer</b>	486.7	532.6	469.8
<b>Early Stage</b>	18.8	23.8	23

Rates per 100,000. Source: Cancer Registry Incidence Rates, 1998-2009

#### **Pettis County Top 10 Cancer Incidence Sites**

<b>Cancer Site</b>	<b>Percent</b>
<b>Lung and Bronchus</b>	15.68
<b>Prostate</b>	15.08
<b>Female Breast</b>	13.37
<b>Colon and Rectum</b>	10.63
<b>Urinary Bladder</b>	5.23
<b>Non-Hodgkin Lymphoma</b>	4.11
<b>Kidney and Renal Pelvis</b>	3.77
<b>Leukemia</b>	3.60
<b>Corpus and Uterus, NOS</b>	2.74
<b>Melanoma of the Skin</b>	2.40

Source: Missouri Cancer Registry, 2005-2009

#### **Benton County Top 10 Cancer Incidence Sites**

<b>Cancer Site</b>	<b>Percent</b>
<b>Lung and Bronchus</b>	21.56
<b>Prostate</b>	14.91
<b>Female Breast</b>	11.81
<b>Colon and Rectum</b>	9.63
<b>Urinary Bladder</b>	4.47
<b>Non-Hodgkin Lymphoma</b>	4.36
<b>Oral Cavity and Pharynx</b>	3.21
<b>Kidney and Renal Pelvis</b>	2.98
<b>Pancreas</b>	2.98
<b>Melanoma of the Skin</b>	2.29

Source: Missouri Cancer Registry, 2005-2009

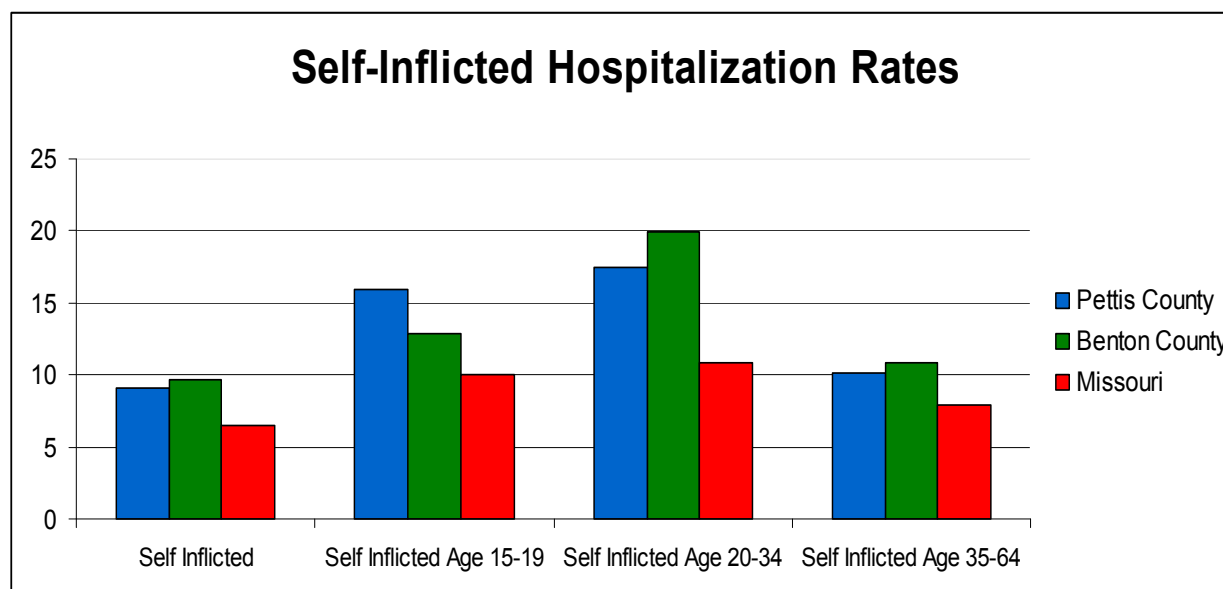
### **Injury**

Missouri Information for Community Assessment (MICA) data shows the Pettis County rate for unintentional injuries is higher than the state rate for both visits to the Emergency Department and hospitalizations. Motor vehicle traffic accident injuries were the most common injury type resulting in hospitalization in Pettis County residents from 1998-2008. The hospitalization rate of 14.2 was higher than the state rate of 11.25. In this time period, there were 1,610 visits to the Emergency Department for assaults and 238 visits for self-inflicted injuries. Hospitalizations from self-inflicted

injuries were higher than the state rate. The highest rate of hospitalizations was in the 20-24 year old age group.

Pettis County has shown a disproportionate amount of hospitalizations due to self-inflicted injuries over the past decade of MICA recording (1999-2009). Self-inflicted injuries are more commonly described as suicide attempts.

### Hospitalization Rates for Self-Inflicted Injuries



Source: Missouri Department Health & Senior Services MICA/1999-2009  
per 10,000 population

### Unintentional Injuries

As compared to the overall rates for the state of Missouri, Pettis and Benton counties have had higher hospitalization rates for unintentional injuries. Emergency department visits due to unintentional injuries were also high for Pettis County when compared to the state.

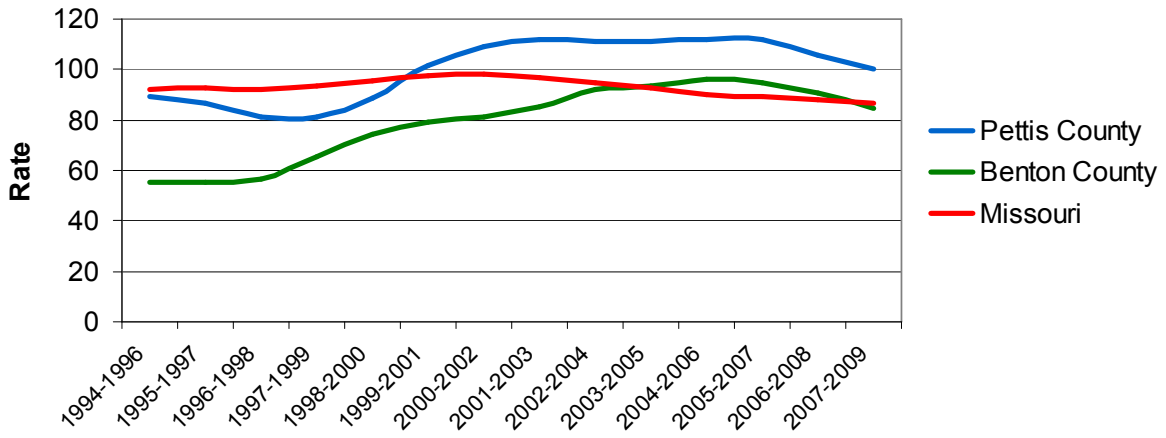
	Hospitalization			ED Visits		
	Pettis County	Benton County	Missouri	Pettis County	Benton County	Missouri
<b>Total Unintentional</b>	65.62	81.9	55.6	105.32	86.9	92.2
<b>Motor Vehicle</b>	14.28	22.6	11.0	10.8	11.5	10.64
<b>Poisoning: Gas/Cleaner/Caustic</b>	0.34	0.2	0.3	0.42	0.3	0.3
<b>Fire/Burn</b>	2.19	1.7	1.4	2.1	1.5	1.7

Source: Missouri Department Health & Senior Services MICA/1999-2009

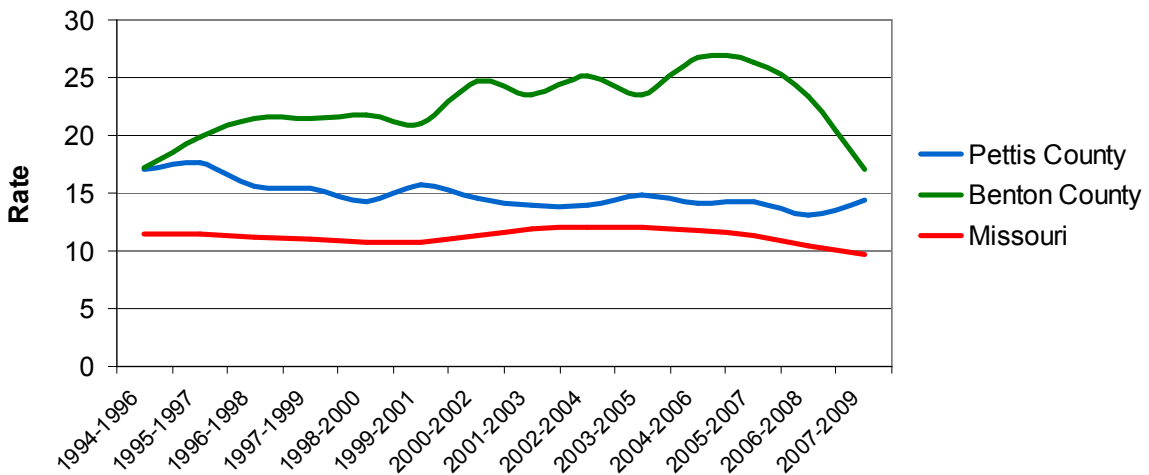
Hospitalization rates are per year per 10,000 population and are age-adjusted to the U.S. 2000 standard population.  
ED Visit rates are per year per 1000 population and are age-adjusted to the U.S. 2000 standard population.

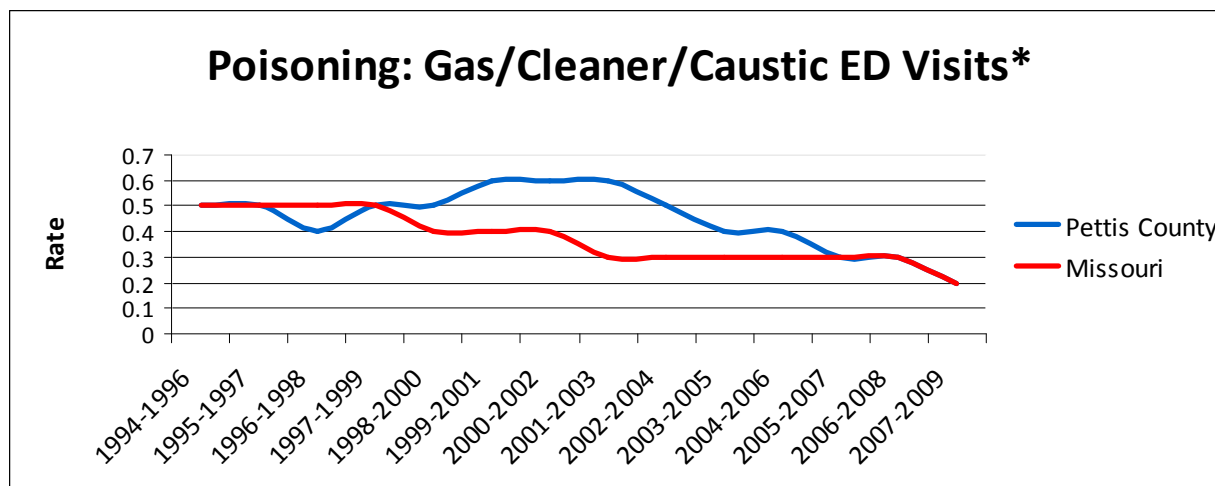


### Total Unintentional Injury: ED Visit

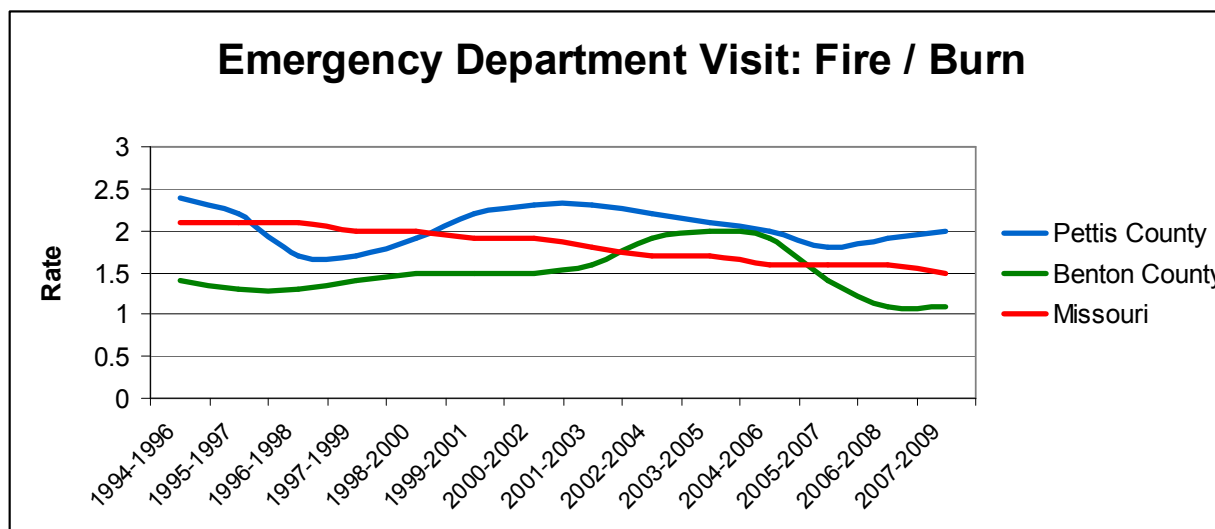


### Motor Vehicle Traffic: Hospitalizations





\*Data unavailable for Benton County



Source: Missouri Department Health & Senior Services MICA

With large numbers of manufacturing jobs Pettis County has a higher probability compared to most of the state to have potentially life threatening injuries at work.

	Pettis County Death Rate	Benton County Death Rate	Missouri Death Rate
<b>Injury at Work</b>	3.48	3.4	1.7

Source: Missouri Department Health & Senior Services MICA/1999-2009

Per year per 100,000 population and are age-adjusted to the U.S. 2000 standard population.

\*Fewer than 20 events: numerator is unstable

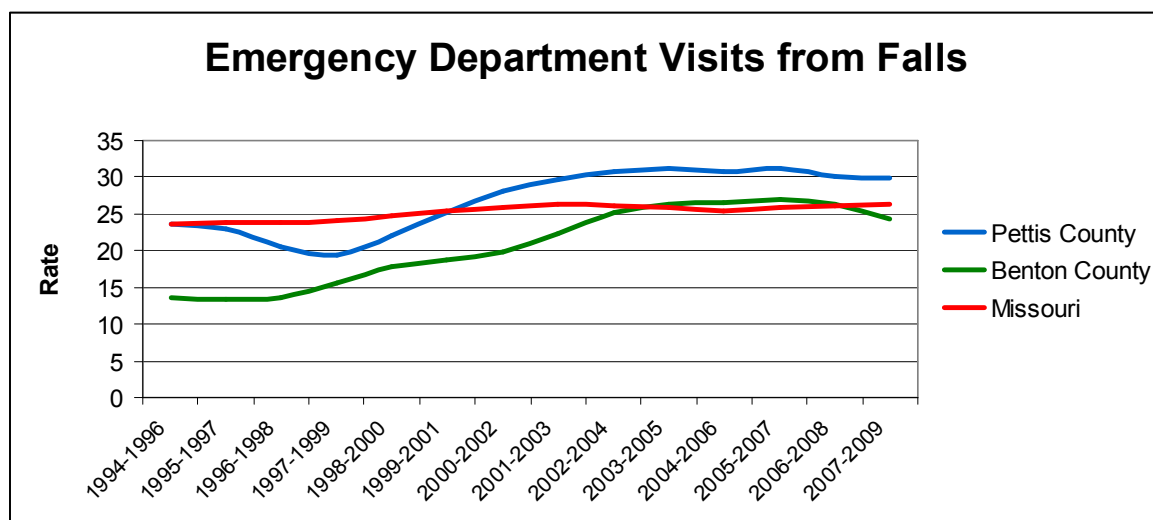
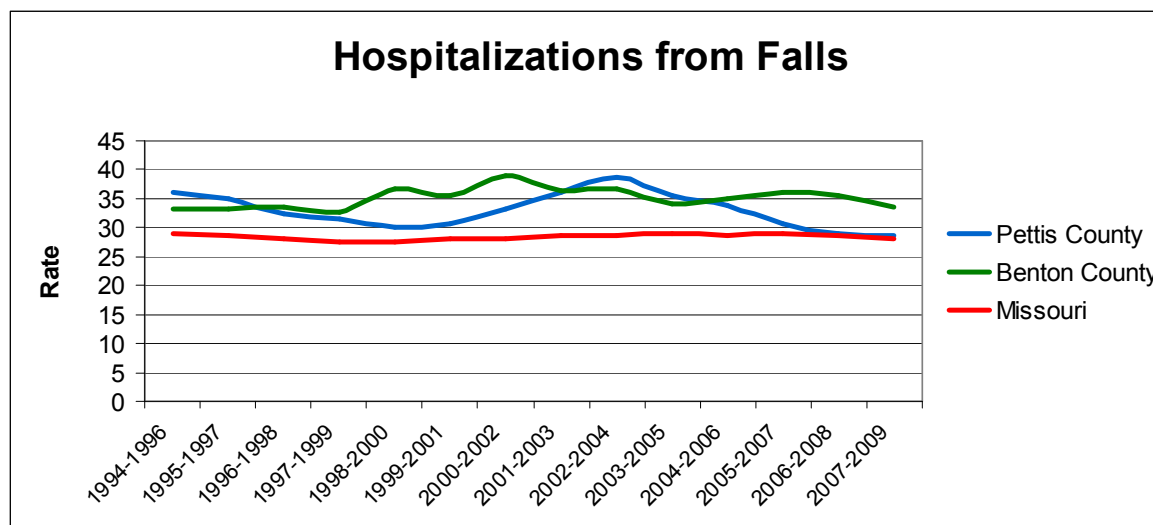
	<b>Pettis County Death Rate</b>	<b>Benton County Death Rate</b>	<b>Missouri Death Rate</b>
<b>Fall-Hospitalization</b>	32.33	35.3	28.3
<b>Fall-ED Visit</b>	28.99	23.4	25.8

Source: Missouri Department Health & Senior Services MICA/1999-2009

Hospitalization rates are per year per 10,000 population and are age-adjusted to the U.S. 2000 standard population.

ER Visit rates are per year per 1000 population and are age-adjusted to the U.S. 2000 standard population.

Variance High – both counties for both Hosp. and ED Visits



Source: Missouri Department Health & Senior Services MICA, 1994-2009

## **Drug and Alcohol**

Using MICA and Missouri Department of Mental Health data, the events listed examine drug and alcohol abuse that impact the residents of Pettis and Benton counties.

### **Alcohol and Drug-related Health Impacts**

	<b>Pettis County</b>	<b>Benton County</b>	<b>Missouri</b>
<b>ED visits: alcohol / drug induced*</b>	2.4	2.1	3.15
<b>ED visits: alcohol / drug poisoning**</b>	0.6	0.5	0.59
<b>Hospitalization: alcohol / drug poisoning***</b>	2.9	3.4	2.9
<b>Death: alcohol / drug induced****</b>	14	23.1 ↑	16.43

\*ER Visit rates are per year per 1000 population. Source: MICA 2009

\*\*Rates are per 1,000 population. Source: MICA 1999-2009

\*\*\*Rates are per 10,000 population. Source: MICA 1999-2010

\*\*\*\*Mortality rates are per year per 100,000. Source: MICA 1999-2009

↑ = Variance High – compared to state rate

### **Law Enforcement Events related to Alcohol and Drugs**

	<b>Pettis County</b>	<b>Benton County</b>	<b>Missouri</b>
<b>Traffic accidents: alcohol / drugs - fatalities</b>	3	1	262
<b>Traffic accidents: alcohol / drugs - injuries</b>	48	16	4498
<b>Driving under the influence: arrests</b>	251	124	35059
<b>Methamphetamine lab Incidents</b>	18	5	1960

Source: Missouri Department of Mental Health, 2010

Instances of methamphetamine laboratory seizures continue to be an issue within rural areas of Missouri. Pettis County seizures continue to fluctuate from one year to the next, however these rates are still of interest because of the great danger associated with methamphetamine laboratories to both persons (including children) living in homes with methamphetamine exposure and those who find and must dispose of the residue associated with the manufacture of methamphetamine.

## **Maternal and Child Health Indicators**

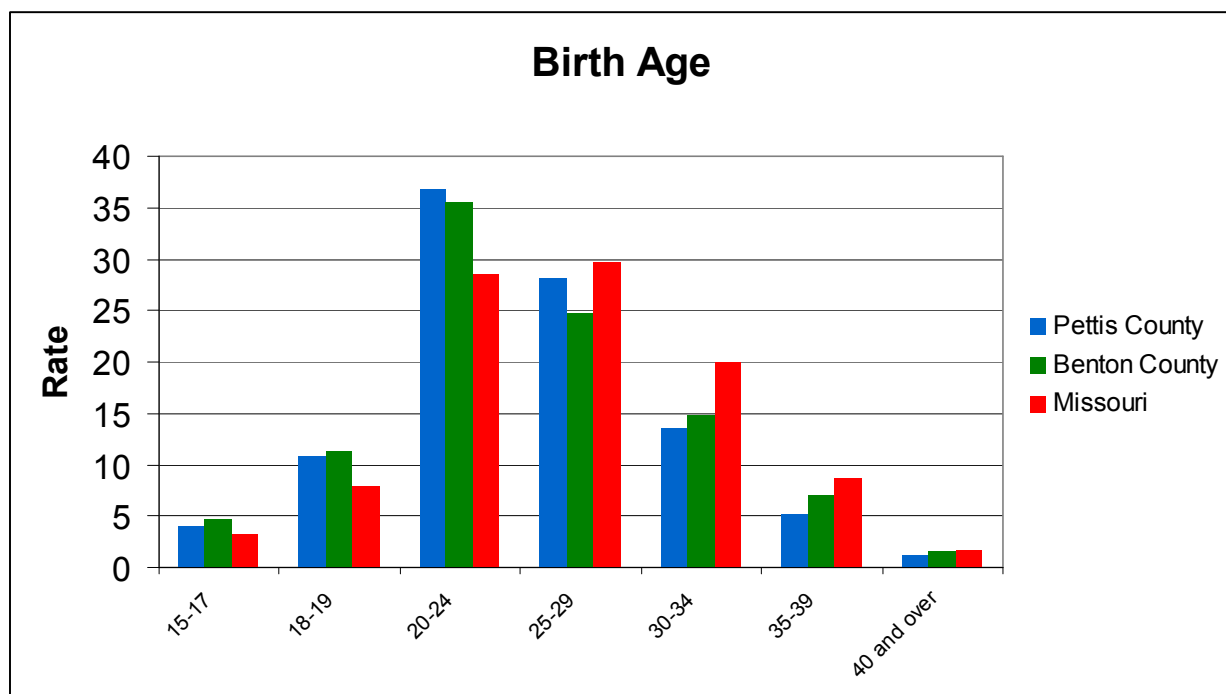
### **General Maternal and Child Health**

Using the Community Profile for Pettis County in MICA to examine prenatal, preconception/family planning, infant health, and delivery as factors for Maternal and Child Health based on 2009 data those noted will be significantly different from the entire State of Missouri.

Event	Pettis	Benton	Missouri
Prenatal Medicaid	64.7 ↑	63.2 ↑	48.4
Prenatal WIC	68.2 ↑	55.9 ↑	43.8
Prenatal Food stamps	35.7 ↑	34 ↑	29.4
Mother Smoked During Pregnancy	21.4 ↑	26 ↑	16.8
Mothers Education Less than 12 Years	27.1 ↑	22 ↑	18.07
Mother > 15% Underweight for Height	6.2 ↑	6.4 ↑	5.25
Live Births & Fertility Rate	80.3 ↑	65.0 ↑	67.21
Out of Wedlock Births	41.3	39.4	39.87
Spacing Less than 18 Months	14.5 ↑	12	12.25
Abortions	68.3	78.7	142.55
Repeat Abortions	24.2	29.2*	41.82
Abortions Mother under 18	12.1	11.1*	19.58
Preterm Births (Less than 37 Weeks Gestation)	11.7	11.5	12.99
WIC Infants-Breast Feeding	63.2 ↑	58	56.02
Non-Hospital live births	16.2 ↑	25.4 ↑	10.43
High Risk not Delivered in OB Level II/III	22.3 ↑	50.0*	11.36
Cesarean Sections	33.7 ↑	35.1 ↑	31.16
Healthy Live Births/(known pregnancies)	85.8 ↑	89.5 ↑	79.39
Abortions/known pregnancies	5.6	4.9*	12.0
Four Plus Live Births	5.9 ↑	3.9	4.79

\* Fewer than 20 events in numerator; rate is unstable. Source: MICA

↑ = Variance High – compared to state rate



As noted, residents of Pettis County are at a greater probability of having children earlier in life when compared to the entire state, with high percentages of residents having children before the age of 24. Using the MICA data on preconception/family planning, women in Pettis County had higher rates of birth among younger women (ages 15 to 24) than the rest of the state and lower rates amongst older women (ages 30-40).

## Birth Spacing

<b>2005-2009 Birth spacing rate less than 18 months</b>		
<b>Pettis</b>	<b>Benton</b>	<b>State</b>
14.5	12	12.25

Source: Missouri Department Health & Senior Services MICA/2005-2009  
Per 1,000

Birth spacing of less than 18 months is higher in Pettis County than in the state. Research shows that mothers and babies are much healthier if there is at least 24 months in between pregnancies.

The 2010 data from the Pettis County Health Center depicts the high risk pregnancies that occurred.

	<b>High risk</b>	<b>Smoked during pregnancy</b>	<b>Mother age 13-19</b>	<b>Less than 12 years of education</b>	<b>Mother 20 years with multiple pregnancies</b>	<b>Inadequate prenatal care</b>	<b>2 risk factors</b>	<b>3 risk factors</b>	<b>Total birth</b>
<b>Jan.</b>	26	8	2	11	1	12	8		33
<b>Feb</b>	35	6	7	16	5	14	11	1	43
<b>Mar</b>	37	8	3	8	2	23	7		52
<b>Apr.</b>	34	6	4	14	10	11	9	1	50
<b>May</b>	44	10	9	9	3	24	9	1	57
<b>June</b>	41	12	4	19	3	17	12	1	61
<b>July</b>	24	8	3	11	2	14	10	2	52
<b>Aug.</b>	34	15	8	13	5	11	10	4	57
<b>Sept.</b>	30	12	2	9	1	11	5	0	51
<b>Oct.</b>	29	4	8	12	3	16	12	1	55
<b>Nov.</b>	48	12	13	19	3	21	16	2	78
<b>Dec.</b>	23	7	4	6	1	7	2		40

## Teen Pregnancy

Pettis and Benton counties continue to have high levels of teen pregnancy. Numbers from the 2009 MICA, Missouri Information for Community Assessment, for Pettis County as compared to the entire state are as follows:

Birth Age	Pettis Rate	Benton Rate	State Rate	Variance
15-17	4.1	4.7	3.26	H
18-19	10.9	11.4	7.86	H
20-24	36.9	35.6	28.5	H
25-29	28.2	24.7	29.79	N/S
30-34	13.5	14.8	19.96	L
35-39	5.2	7.1	8.69	L
40 and over	1.2	1.6	1.81	L

Rates are per 100 live births. Source: MICA, 2005-2009

The number of births to the very young (ages 10-14 years old) has been declining for the past three years, as well as the total number of births to teenagers. Recently released data for 2010 indicates a further decrease with 69 births to teenagers, a 24 percent decrease from the previous year and a 39 percent decrease from when teen pregnancy incidents peaked in 2006.

## Child Health

Using information from 2010-2011 WIC data from the Pettis County Health Center, there is a slightly higher difference between overweight children, at-risk for overweight children, and maternal smoking when compared to the entire state.

	Pettis Percent	State Percent
<b>Overweight Children</b>		
2010	13.1	10.9
2011	15.6	12.5
<b>At-Risk for overweight children</b>		
2010	19.8	19.6
2011	23.1	21.3
<b>Maternal Smoking</b>		
2010	24.9	24.3
2011	24.4	23.6

\*2010-2011 MO WIC Information Network System (MOWINS)

## Trends

Areas that have improved from 2007-2011

- Births to mothers without high school diploma
- Low birth weight infants
- Infant mortality
- Child abuse and neglect
- Violent deaths ages 15-19 (per 100,000)
- Annual high school drop outs
- Births to teens, ages 15-19

Areas that have declined from 2007-2011

- More students enrolled in free/reduced lunch
- Child deaths ages 1-14 (per 100,000)
- Out-of-home placement entries (per 1,000)

Other measures of child well-being included:

	2007	2011
<b>Minority children</b>	17.1%	19.5%
<b>Limited English proficiency</b>	598	516
<b>Child receiving subsidized child care</b>	103.5	61.8
<b>Licensed child care capacity</b>	117.3	212.1
<b>Children receiving cash assistance</b>	5.8%	5.2%
<b>Children receiving food stamps</b>	36.6%	38.2%
<b>Children enrolled in Mo HealthNet for Kids</b>	39.2%	38.1%

Source: Kids Count in Missouri 2012 Data Book

## Infant Deaths

Pettis County had 18 infant deaths from 1998-2009. The highest number of deaths was a result of unintentional injuries at 13 deaths.

## Hispanic Maternal Health

Minority health, most notably, Hispanic women maternal health, continues to show a disparity compared to the majority population. According to the Missouri Foundation for Health, Hispanic mothers are more than twice as likely to not receive adequate prenatal care compared to the white population.

## Immunizations

Pettis County continues to be successful at reaching most of their children with the vaccination program. Data from 2010 showed that 97.1-98.8 percent of 5 different vaccinations were given to school-aged children. The percentages were for DTP/DTaP/DT, Poliovirus, MMR, Hepatitis B, and one dose for Varicella (Missouri had



only required one dose of Varicella but effective for the 2010-2011 school year it is now required for two doses to enter kindergarten). Also, the exemption rates for Missouri remained low. (The only two ways to become exempt in Missouri are medical and religious reasons; Missouri does not accept philosophical reasons as a vaccine exemption.)

## Missouri Vaccination Mandates

Vaccines Required for School Attendance	Doses Required by Grade												
	K	1	2	3	4	5	6	7	8	9	10	11	12
DTaP/DTP/DT <sup>1</sup>	4+	4+	4+	4+	4+	4+	4+	4+	4+	4+	4	4	4
Tdap <sup>2</sup>									1	1	1	Tdap or Td required 10 years after last DTaP, DTP or DT.	
IPV (Polio) <sup>3</sup>	3+	3+	3+	3+	3+	3+	3+	3+	3+	3+	3+	3+	3+
MMR	2	2	2	2	2	2	2	2	2	2	2 measles, 1 mumps, 1 rubella required, however 2 MMRs are highly recommended.		
Hepatitis B	3+	3+	3+	3+	3+	3+	3+	3+	3+	3+	3+	3+	3+
Varicella <sup>4</sup>	2	2	2	1	1	1	1	1	No doses required, however vaccination is highly recommended.				

Source: Missouri Department of Health & Senior Services

## Women's Health

Cause	Pettis	Benton	State
Heart Disease- Deaths	176.4	172.5	200.12
Heart Disease- Hospitalizations	149.7 ↑	146.8 ↑	129.38
Breast Cancer- Mastectomies	4.5	5.7	6.36
Chronic Lower Respiratory Disease	36.6 ↑	30.2 ↑	23.98
Diabetes Mellitus-Hospitalizations	18.9	14.6	16.42
Pneumonia and Influenza-Hospitalizations	57.5 ↑	57 ↑	44.28
Intentional Injury-Self-Inflicted Injuries	192.7 ↑	248 ↑	150.76
Inflammatory Pelvic Disease ED Visit	3.8 ↑	2.6	2.99
Menstrual Disorder ED Visit	3.3 ↑	2.2	2.26
Hysterectomies	73.4 ↑	70.3 ↑	48.6

Source: Source: Missouri Department Health & Senior Services MICA/1999-2009

Case, death and injury rates are per year per 100,000 population and are age-adjusted to the U.S. 2000 standard population.

Hospitalization rates (including mastectomies and hysterectomies) are per year per 10,000 population

↑ = Variance higher than state rate

Currently, according to the Office on Women's Health the entire state of Missouri ranks 50<sup>th</sup> (out of the 50 states) in women smoking during pregnancy, and also poor rankings in a variety of other health indicators, including heart disease (43<sup>rd</sup>), total cancer (43<sup>rd</sup>), lung cancer (48<sup>th</sup>), women who eat 5+ vegetables a day (45<sup>th</sup>), and routine check up in the past two years (47<sup>th</sup>). Also, in 2007 Missouri compared to the entire United States is a part of the lowest quintile in percent of children who exclusively

breast fed for the first three months with 28.2 percent of Missouri women breast-feeding exclusively in the first three months compared to 33 percent for the entire United States.

Source: US Department of Health and Human Services, Office on Women's Health, 2011

## **Adolescent Health**

The 2011, Behavioral Health Profile for Pettis County was administered in even numbered years to sixth through 12<sup>th</sup> grade students in participating school districts. Results showed that 54.1 percent of Pettis County youth believe that it would be easy to get cigarettes, and 46.4 percent have friends who smoke. Healthy People 2020 set a target to lower tobacco use among high schoolers to 21 percent. Also, 53.7 percent of youth in Pettis County report that it would be easy to get alcohol and 56.8 percent have friends who drink alcohol. In addition, 20.1 percent believe that it would be easy to get other drugs such as cocaine, methamphetamine and ecstasy. Missouri youth as a whole tend to perceive marijuana as being safer than other illegal drugs and safer than tobacco.

Shown below are rates of substance abuse among youth. Most Pettis County percentages were higher than the state.

### **Current Substance Abuse for grades 6 through 12 (Used in the past 30 days)**

	<b>Pettis County</b>	<b>Missouri</b>
<b>Cigarettes</b>	15.7%	13.7%
<b>Chewing tobacco</b>	2.7%	4.8%
<b>Alcohol</b>	21.4%	19.8%
<b>Binge drinking</b>	13%	11.4%
<b>Marijuana</b>	9.6%	9.4%
<b>Inhalants</b>	3.2%	3.0%
<b>Prescription drugs not prescribed for student</b>	9.1%	6.7%
<b>Over-the-counter medications for non-medical use</b>	5.4%	4.8%

Source: Department of Mental Health, 2012

Comparing the 2007 data to the recent 2010 data regarding healthy lifestyles for adolescent, Missouri's youth BMI numbers are slightly higher than the national norm. However, Missouri young people are a little more active than their counterparts.

	<b>2007</b>		<b>2010</b>	
	Missouri	U.S.	Missouri	U.S.
<b>Overweight by BMI</b>	14.3	14.3	14.4	15.4
<b>Obese by BMI</b>	12	12	14.4	12.0
<b>Met recommended level of physical activity</b>	43.5	34.7	48.3	37.0

Source: Centers for Disease Control and Prevention

Using the 2010 Missouri Student Survey for students between grades 6 through 12, mental health of the students was identified using these factors during the past 30 days.

	Never	Not very often	Sometimes	Often	Always
Were you sad?	21.4%	30.6%	29.5%	14.2%	4.3%
Were you grouchy or irritable, or in a bad mood?	10.2%	24.6%	41.1%	19.6%	4.5%
Did you feel hopeless about the future?	50.8%	21.9%	16.3%	7.3%	3.7%
Did you feel like not eating or eating more than usual?	43.0%	19.2%	20.9%	10.9%	6.1%
Did you sleep a lot more or a lot less than usual?	30.8%	23.3%	25.8%	13.2%	6.8%
Did you have difficulty focusing on your school work?	23.3%	24.3%	29.4%	14.0%	9.0%

Source: Missouri Department of Mental Health Division of Alcohol and Drug Abuse, Missouri Student Survey, 2012

Feeling hopeless about the future and having difficulty concentrating on schoolwork are areas of concern as these indicators can impact other health related-issues such as adolescent pregnancy and high school graduation rates. For young people who feel hopeless, the ability to make choices that impact the future can be difficult.

## **Mental Health**

In 2010, 525 Pettis County residents received treatment for serious mental illness at publicly funded facilities. The most common diagnosis for the state and the central region of Missouri, which includes Pettis County, was mood disorders. Mood disorders are classified as mania, major depression and bipolar disorder. In the Central Missouri region, 9.2 percent of residents age 18 and over have had serious mental distress in the past 12 months. Nationwide, 45 percent of those who have had a serious mental distress episode received mental health services. Individuals struggling with serious mental illness are at a higher risk for homicide, suicide and accidents as well as chronic conditions including cardiovascular and respiratory diseases and substance abuse disorders. Pettis County reported five suicides in 2009.

A survey conducted by Royal Oaks Hospital/Pathways Community Health as part of its Community Health Needs Assessment found that 69 percent of referral sources find access to mental health challenging. Perceived gaps were highest in the areas of abuse/neglect services (child/elder), bully prevention, and drug or alcohol rehabilitation services (30-day treatment programs). Access to mental health providers is another

issue. According to the 2013 County Health Rankings, there is one mental health provider for every 6,038 residents in Pettis County.

Similarly, a survey of community respondents showed that 71 percent felt there are not enough mental health services for people who cannot afford to pay co-pays and 40 percent believed there are not enough mental health services available in the community. Bully prevention also ranked highest among perceived gaps in mental health services.

## **Prevalence of Infectious Disease**

### **Communicable Disease Rates**

Data from 2011 has shown that there were 16 cases of HIV with a rate of 2.1 per 100,000 and 7 cases of AIDS with a rate of 0.9 per 100,000 in North Central County. Chlamydia and gonorrhea continue to be an issue for Pettis County. Using MICA data from 2006-2008, chlamydia was 1543.7/100,000 and 428.3/100,000 for gonorrhea. Pettis County was in the first (top 23 counties) quintile for chlamydia but was not statistically significantly different from state numbers. Also, chlamydia and gonorrhea rates for teens aged 15-19 were around state averages, but chlamydia was in the top quintile for the entire State even though it was below the state average.

	<b>Pettis</b>	<b>State</b>
<b>Chlamydia</b>	2,051	2,129.1
<b>Gonorrhea</b>	608.8	625.3

Per 100,000

### **Case Counts of Selected Communicable Diseases - Missouri**

	<b>2011</b>	<b>2010</b>	<b>2009</b>	<b>2008</b>	<b>2007</b>
<b>Animal Rabies</b>	29	63	65	64	38
<b>Campylobacteriosis</b>	919	1054	770	815	722
<b>Cryptosporidiosis</b>	495	548	193	195	214
<b>E coli O157:H7</b>	122	105	68	76	80
<b>Ehrlichiosis*</b>	194	142	167	227	222
<b>Giardiasis</b>	344	426	524	468	515
<b>Haemophilus influenzae**</b>	80	87	63	72	42
<b>Hepatitis A</b>	17	30	27	45	24
<b>Hepatitis B, Acute</b>	60	67	47	38	40
<b>Hepatitis C, Acute***</b>	8	6	0	2	5
<b>Legionellosis</b>	57	37	65	71	50
<b>Lyme Disease</b>	8	5	10	13	10
<b>Meningococcal Disease</b>	15	23	27	26	18
<b>Mumps</b>	11	10	15	8	12
<b>Pertussis</b>	438	604	1015	561	118
<b>Q Fever</b>	1	3	3	5	12

<b>Rocky Mountain Spotted Fever</b>	270	278	253	407	315
<b>Salmonellosis</b>	900	843	657	764	764
<b>Shigellosis</b>	182	1582	1046	227	1276
<b>Strep Disease, Group A Invasive</b>	151	142	94	97	91
<b>Strep Pneumoniae, Drug Resistant</b>	105	94	74	93	65
<b>Tuberculosis Disease</b>	98	107	80	107	118
<b>Tularemia</b>	21	18	13	21	35
<b>West Nile Fever</b>	4	0	0	3	16
<b>West Nile Encephalitis/Meningitis</b>	6	3	5	12	61
<b>Season****</b>	11-12	10-11	09-10	08-09	07-08
<b>Influenza</b>	20474	17739	30567	11137	30978

Source: Missouri Department of Health & Senior Services, 15 Year Report, 2011

\*Ehrlichiosis, other or unspecified

\*\*Haemophilus influenzae (includes HIB Meningitis and Other Invasive)

\*\*\*Hepatitis C became reportable in 1997

\*\*\*\*Influenza season crosses two calendar years beginning in Week 40 of the first year and ending in Week 20 of the second year.

## **Vaccine Preventable Infections**

Cases of Varicella (chicken pox) continue to occur within Pettis County, but rates have decreased since the previous community assessment in 2009 (there were 29 cases). These rates may decrease in future community assessments, as new requirements for 2 doses of Varicella will be required for children entering kindergarten.

According to the CDC, there were 853 confirmed cases of pertussis in Missouri in 2012, up from 438 cases in 2011. This increase was consistent across the country; nationally, the rate of pertussis cases more than doubled from 2011 to 2012. Forty-nine states, including Missouri, saw increases, some quite dramatic.

There were two cases of Hepatitis B during pregnancy in 2011. Ninety-five percent of women who have Hepatitis B during their pregnancy will give their child Chronic Hepatitis B. The state of Missouri mandates Hepatitis B vaccinations for children who go to daycare, elementary school and middle school.

## **Environmental Health Risk Indicators**

Pettis County has a high rate of housing built before 1950 when compared to the United States as a whole, and has a median home age of 47 years old compared to the United States at 33 years old. According to the Missouri Housing Development Commission 30.9 percent of houses were built before 1950 compared to 23.6 percent for the entire state. Many of the older houses located in Sedalia and the other surrounding towns are rental properties. This is particularly true of the larger houses in

Sedalia that have been subdivided into apartments. As a result of these older houses there is a risk for increased blood lead levels (around 1.7 percent of children in Pettis County have elevated lead levels).

Pettis County like most of Missouri is placed in a level 2 radon zone meaning that there is moderate potential for levels of radon around 2 and 4 pCi/L (picocuries per liter). The Environmental Protection Agency and the Missouri Department of Health and Senior Services recommend that houses with 4 pCi/L or higher will undergo remediation to prevent further possible health effects. According to MICA data from 2007, 33.3 percent of the County Level Survey respondents said that they live with someone who smoked cigarettes, and 22 percent were exposed to cigarette smoking in their home in the last week. Cigarettes can lead to further radon exposure in the home. Through the DHSS, Missouri offers free radon testing for residents.

The City of Sedalia adds fluoride to its water supply, while other surrounding areas in the county have naturally occurring fluoride requiring no additional fluoride. Pettis County Health Center has continued the Dental Coalition to address the lack of dental care for children in Pettis County. The Dental Coalition, in collaboration with State Fair Community College dental hygiene students and local dentists offers assessment and dental sealants for third graders throughout Pettis County. School nurses offer fluoride rinse for students living in areas with low fluoride in the water. The table below shows the data for children who have received services from the Dental Coalition from 2008 to 2011.

#### 2008-2009 School Year

School	Students	Screened	Sealants	Participation	Referred for Urgent care
Heber Hunt	93	74	273	85%	23
Dresden	16	16	44	94%	2
Skyline	99	74	266	75%	11
Parkview	89	69	180	78%	5
LaMonte	17	17	58	100%	5
Washington	46	39	113	85%	3
Green Ridge	36	26	63	78%	1
St. Paul's	12	12	42	100%	0
Horace Mann	52	52	146	100%	4
<b>Totals</b>	<b>463</b>	<b>379</b>	<b>1185</b>	<b>82%</b>	<b>54</b>

#### 2009-2010 School Year

School	Students	Screened	Sealants	Participation	Referred for Urgent Care
Skyline	76	57	161	67%	18
Houstonia	32	18	62	56%	5
Dresden	14	12	30	85%	1
St. Paul's	5	5	13	100%	1

<b>Park View</b>	87	81	181	82%	5
<b>Heber Hunt</b>	92	85	219	92%	4
<b>Green Ridge</b>	22	16	54	73%	0
<b>LaMonte</b>	15	14	30	93%	0
<b>Washington</b>	39	35	92	90%	2
<b>Horace Mann</b>	59	52	148	88%	9
<b>Smithton</b>	51	48	117	89%	8
<b>Totals</b>	492	423	1107	86%	53

#### 2010-2011 School Year

<b>School</b>	<b>Students</b>	<b>Screened</b>	<b>Sealants</b>	<b>Participation</b>	<b>Referred for Urgent Care</b>
<b>St. Paul's</b>	8	8	20	100%	0
<b>Green Ridge</b>	31	24	44	77%	1
<b>Smithton</b>	45	44	101	98%	9
<b>Heber Hunt</b>	96	80	163	83%	4
<b>Skyline</b>	89	81	161	91%	0
<b>Parkview</b>	67	56	113	84%	2
<b>Dresden</b>	15	14	38	93%	0
<b>Washington</b>	45	42	94	93%	5
<b>LaMonte</b>	19	17	29	89%	2
<b>Houstonia</b>	14	12	23	86%	2
<b>Horace Mann</b>	49	46	90	94%	1
<b>Totals</b>	478	424	876	89%	26

A major improvement in the access to dental care for children has been the dental program through Katy Trail Community Health Center, a federally qualified health center. Since the inception of the Dental Coalition program and the Katy Trail Community Health program there has been a statistically identifiable drop in the number of kids who require emergency dental services. The trend of improved dental care is especially important to improving the overall health of the children of the community as research has shown improved dental health can improve all health. Based on the reports of dentists at Katy Trail Community Health, baby bottle caries continue to be a significant source of dental problems for young children. This is an area for community education provided by a number of health care providers in the community.

Access to dental services has improved for children, but continues to be a challenge for adults. Katy Trail Community Health provides limited dental services for adults, and many Pettis County residents do not have dental insurance. Bothwell Regional Health Center Emergency Department reported that dental disorders were the most prevalent diagnosis in 2010.

## **Public Safety/Domestic Violence**

When compared to the rest of the state, Pettis County has a low incidence of violent crime (murder, forcible rape, robbery, aggravated assault). Compared to most of the state (as the table shows) the variance between Pettis County and the state in many of the common crimes was significantly lower. Pettis County is showing a downward trend of total assault injuries.

Although the cases of spouse-partner abuse are not statistically above the state rate, the problem of abuse does exist in Pettis County. To address the issue, there is a local Citizens Against Spousal Abuse (CASA) shelter that provides housing and education in life skills to women and children who have been victims of abuse. CASA does not work alone in this venture, but is a collaborative effort among multiple local agencies that aid victims of abuse and to assist women and children in recovery. In the ten-year period between 1998-2008, there have been 51 Emergency Department (ED) visits for spousal abuse, 40 ED visits for elder abuse, and 52 ED visits, 10 hospitalizations, and 1 death from child abuse.

<b>Cause</b>	<b>Rate</b>	<b>State Rate</b>	<b>Variance</b>
<b>Assault-Death</b>	3.7	7.14	L
<b>Assault-Hospitalizations</b>	2.1	3.12	L
<b>Cut-Pierce-Hospitalization</b>	0.2	0.54	L
<b>Firearm-Deaths</b>	1	4.83	L
<b>Firearm-Hospitalizations</b>	0.1	0.73	L
<b>Fight- ED Visit</b>	1.8	1.92	L
<b>Blunt Object-ED Visit</b>	0.4	0.47	L

Using Kids Count County data for 2010, downward trend of Juvenile law violation referrals, aged 10-17 has been shown.

Juvenile law referrals/1,000

<b>2009</b>	<b>2005</b>	<b>2004</b>	<b>2003</b>	<b>2002</b>	<b>2001</b>
87.8	124.3	135.1	105	109.2	112.9



## Dissemination Plan

A requirement of the Community Health Needs Assessment (CHNA) is to disseminate the final report and make it widely available to the public. The following is the plan for sharing the CHNA with the community in May/June 2013:

- Post CHNA on the brhc.org web site
- Promote on Facebook page, facebook.com/bothwellregional
- Publish information regarding findings and availability of the report in the *Health Matters* the Bothwell Regional Health Center consumer newsletter mailed to 11,300 homes in the service area, and the Bothwell employee newsletter.
- Distribute press release regarding findings and availability of the complete report
  - *The Sedalia Democrat*
  - *The Sedalia News Journal*
  - *Benton County Enterprise*
  - *Cole Camp Courier*
  - *Lincoln New Era*
  - KDRO/KPOW
  - KSIS/KIXX
  - KAYQ
  - Sedalia Area Chamber of Commerce weekly e-newsletter
  - Pettis County Health Center monthly newsletter (July)

Requests for printed copies can be made by contacting Bothwell Community Outreach, (660) 827-9138 or e-mailing, info@brhc.org. Printed copies for review will be available at:

- Bothwell Education Center
- Katy Trail Community Health
- Pettis County Health Center
- Pettis County Community Partnership
- Sedalia Senior Center
- Warsaw Senior Center
- Sedalia Housing Authority
- Benton County Health Department
- Amigos de Cristo Lutheran Church

Many of the places provided with a printed copy serve lower socioeconomic populations, medically underserved and chronically ill.

## Summary of Findings

The secondary, quantifiable data illustrates areas where Pettis and Benton counties are better or worse than state rates, percentages and trends. The primary data offers a qualitative look at the experiences, beliefs, attitudes and opinions of the community. Needs were identified when the secondary and primary data align. Three needs emerged: access to care, health behaviors and chronic disease prevalence.

### Access to Care

Access to health-care services—including mental, dental, primary and specialty care—were identified in both the primary and secondary data as being needs in the community.

Access and affordability topped the list of most pressing community health issues among the 401 survey respondents. About 14 percent of the respondents said they or a member of their household had difficulty finding a doctor within the past two years. The majority of those who had difficulty (60 percent) said they were unable to find a physician who would take new patients.

Adult primary care services were listed as the overwhelming highest need in the community (45 percent), followed by emergency/trauma care (28 percent). Bone and joint (orthopedic) and diabetes (endocrinologist) specialists were the physicians respondents had the most difficulty finding. It should be noted that arthritis specialists (rheumatologist) was listed as a need. Since the survey was administered, Bothwell has opened an internal medicine practice that includes a rheumatologist.

The need for primary care can be demonstrated by examining the volume and types of cases seen in Bothwell's Emergency Department, which had 24,848 visits in 2012. The majority of the top 12 diagnoses in 2010—urinary tract infection, acute upper respiratory infection, otitis media (earache), bronchitis, headache/migraine, acute pharyngitis (sore throat), lumbago (low back pain), acute bronchitis and ankle sprain—could typically be seen in a primary care setting except in severe cases. Only 10 percent of the patients seen in the Emergency Department required admission to the hospital for treatment.

Possible contributing factors to the large quantity of Emergency Department visits are lack of access to primary care services, and 20 to 25 percent of the population is uninsured. There are 2,348 lives for every one primary care physician in Pettis County and a similar disparity in Benton County.

A clear lack of dental care exists with one dentist to serve every 2,695 people in Pettis County and 6,451 in Benton County. Dental disorders ranked fifth in the top Emergency Department diagnoses at Bothwell in 2010, with 400 visits. Survey participants ranked lack of dental care as the 12<sup>th</sup> most pressing health problem in the community (30 percent).

The majority of participants indicated they did not have access to substance abuse or mental health counseling. According to the 2013 County Health Rankings data, there is one mental health provider for every 6,038 residents in Pettis County. The coverage in Benton County is dramatically less with one mental health provider for every 19,108 residents, according to the rankings. Using the most recent MICA data, in the decade from 1999-2009 both Benton and Pettis counties outpaced the state in self-inflicted hospitalization rates, or suicide attempts.

Bothwell Regional Health Center actively recruits new providers to the area and has most recently opened primary care and ear/nose/throat practices, in addition to the internal medicine group. Resources are focused on expanding and improving primary and specialty care, and the health center will continue to seek partnerships with mental health providers to improve services to the community.

## **Health Behaviors**

Poor health behaviors were a common thread found in secondary and primary data. Pettis County has a 29 percent smoking rate, higher than the state's rate of 23 percent. Although more than half of survey respondents (56.3 percent) indicated they were smokers, only 16.2 percent said they still smoke, which means 27.5 percent have quit smoking. Still, participants ranked smoking among adults and youth in the top ten community health issues of most concern. Smoking cessation and prevention was identified as the third most needed health education service.

In addition to smoking, obesity is another area of concern. Adult obesity in Pettis County (29 percent) is slightly lower than the state (31 percent), but still far from the national benchmark of 25 percent, according to the County Health Rankings. Benton County has an adult obesity rate of 32 percent. Residents in Pettis and Benton counties tend to be less active (33 percent physical inactivity). Nearly 40 percent of the survey respondents reported they were told by a doctor to lose weight for health reasons, and nearly 60 percent were currently trying to lose weight.

More than half of the survey respondents said obesity in adults was among the most important health issues (55.2 percent) and obesity in children and teens was also identified as a priority (46.9 percent). Participants thought education about diet and/or exercise was the most needed in the community (54.1 percent), with stress management coming in second (41.2 percent).

Teen pregnancy didn't rate as high of a concern for survey participants, but about one in four (25.9 percent) still indicated it is a community issue that needs to be addressed. Pregnancy rates among teenage girls in Pettis and Benton counties remains much higher than the state rate. There has been a drop in pregnancies among the youngest girls, under age 15.

## **Chronic Disease Prevalence**

With health behaviors being of concern, it's not surprising that prevalence of chronic diseases is also an issue. Rates of heart disease, Chronic Obstructive Pulmonary Disease (COPD), prostate cancer, and stroke hospitalization rates for both Pettis and

Benton counties were higher than the state. Although heart disease remains the leading cause of death in both counties, the rates are slightly less than the rest of the state.

Nearly 40 percent of survey participants have been told by their doctor that they have high blood pressure. About 30 percent reported having high cholesterol and hypertension, and 12.6 percent had diabetes or high blood sugar. Slightly more than 10 percent reported having a cancer diagnosis. Only a small percent of the participants have had a heart attack (3.3 percent) or stroke (2.3 percent). Cancer ranked as the chronic disease of most concern (32 percent) among community health problems followed by heart disease (27 percent). Cancer screenings and diabetes were near the top of needed health education services.

Preventable hospitalizations are predominately higher than state rates; however, great strides have been made and nearly all indicators are trending downward. Pettis County rates dropped 18 percent from 2003 to 2009, and Benton County has dropped 15 percent during the same time period. Hospitalization rates for COPD and congestive heart failure were the most improved, even though both conditions continue to be above the state rate. Correspondingly, the readmission rate for congestive heart failure has also shown improvement, which could be due to Project Re-Engineered Discharge, which better equips patients before they leave the hospital and offers additional support after they return home. A similar project has recently started targeting COPD patients.

## **Conclusion**

The information gathered from secondary sources, in addition to surveying members of the community, will serve as a valuable tool when creating implementation strategies to meet identified needs and improve the health of the community. The findings from the research presented here will be shared with the public.

## **Implementation Strategies**

A requirement of the Community Health Needs Assessment (CHNA) is to use the findings from the report to generate implementation strategies addressing identified health issues. Through the research, three areas of need were identified: access to care, health behaviors and chronic disease prevalence. The following strategies are targeted toward addressing those needs:

### **1. Continue to focus on recruitment and retention of health-care providers.**

While strides have been made in addressing the shortage of health-care providers, continued focus on the area of recruitment and retention is needed for the future. Since 2012, Bothwell has opened Bothwell Family Health, Internal Medicine, Ear, Nose & Throat, Surgical Services and Wound Healing Center to expand health care options and better serve the community. However, great need still exists in the areas of primary care, orthopedics, and endocrinology.

### **2. Provide more opportunities for health education and promote healthy behaviors throughout the community.**

With implementation of the Affordable Care Act and changes in the health-delivery system, Bothwell needs to focus more on positioning itself as a source of health information and provide substantive programs that educate people about steps they can take to improve their health. Information could include nutrition, physical activity and smoking cessation. Residents also would benefit from education on how to access the health-care delivery system, the medical home concept and how to be responsible for their own health.

### **3. Work collaboratively with other organizations to improve the health of the community.**

Bothwell must continue to be a leader in community partnership initiatives to improve health literacy, health behaviors and access to the health-care delivery system. The organization will continue to support the efforts of the Blue Ribbon Health and Wellness Planning team and its subcommittees — Healthy Living Action Group, Clean Air Sedalia, Breastfeeding Coalition, and Adolescent Health Coalition — which strive to make the community a healthier place to live. Each of the subcommittees address needs identified through the CHNA including healthy lifestyles, smoking, and teenage pregnancy and risky behaviors.

### **4. Work to reduce the number of late-stage cancer diagnoses.**

The majority of cancer cases diagnosed at Bothwell's Susan O'Brien Fischer Cancer Center are not found until the disease has progressed to Stage 3 or 4. Working with the Cancer Center staff and using American Cancer Society materials, Bothwell needs to develop and implement programs that better educate the public about the warning signs and causes of cancer, as well as necessary screenings.

**5. Continue to support quality initiatives to improve hospital readmissions and assist patients in managing chronic diseases.**

It appears the Project Re-Engineered Discharge (Project RED), which better equips patients with congestive heart failure to manage their chronic disease before they leave the hospital and offers additional support after they return home, is working well as Bothwell has seen a significant reduction in hospital readmissions. It is important to continue Project RED along with the recently started Project Blue, which focuses on patients with Chronic Obstructive Pulmonary Disease (COPD). Bothwell should continue to look for quality initiatives that improve outcomes for patients.

## **Medical Services**

**Bothwell Regional Health Center**, 601 East 14th Street, 660-826-8833, [www.brhc.org](http://www.brhc.org)

Bothwell Regional Health Center operates a 140-bed hospital in Sedalia, as well as a network of physician practices and out-patient diagnostic and treatment facilities. With a staff of about 850 employees and 100 physicians, BRHC provides a full range of diagnostic, medical and surgical services. These services include cancer care, cardiovascular care, obstetrics and gynecology, emergency services, orthopedics, rehabilitation therapy, pediatrics, outpatient services, diagnostic imaging, hospice, home health, medical equipment and community outreach and education.

**Katy Tail Community Health**, 821 Westwood Drive, 1-877-733-5824 and 660-826-4774

Katy Trail Community Health (KTCH) provides primary health care for the community. KTCH has three locations in central Missouri to serve surrounding communities: Sedalia, Warsaw, and Versailles. KTCH is a federally qualified health center that offers medical, dental, and behavioral health services.

**Pettis County Health Center**, 911 East 16th Street, 660-827-1130, [www.pettis.lphamo.org](http://www.pettis.lphamo.org)

Pettis County Health Center is a local public health agency that is supported by local taxes, by reimbursement from federal and state programs and by a sliding fee-for-service scale based on household income. Available services include general health and wellness screens, communicable disease control activities including immunizations, numerous child and adolescent health/safety programs, women's health services, WIC (Women, Infants, and Children) Food Supplement Program, and environmental public health services.

## **Dental Services**

**Katy Tail Community Health**, 821 Westwood Drive, 1-877-733-5824 and 660-826-4774

Katy Trail Community Health (KTCH) provides primary health care for our community. KTCH has three locations in central Missouri: Sedalia, Warsaw, and Versailles. They offer medical, dental, and behavioral health services.

**Dental Hygiene Clinic at State Fair Community College**, 3201 West 16th Street, 660-596-7406, [www.sfccmo.edu](http://www.sfccmo.edu)

Accepting appointments for patients of all ages and conditions of teeth. Services include: exam, cleaning, child cleaning and fluoride, bitewing radiographs, full mouth radiographs, and scaling and planning.

### **Mental Health Services**

**Burrell Behavioral Health**, 201 West 3rd, 827-2494

Burrell Behavioral Health provides information and referral, assessment, counseling, medication, crisis services, mental illness and substance abuse treatment, community psychiatric rehabilitation, case management, and education.

**Katy Tail Community Health**, 821 Westwood Drive, 1-877-733-5824 and 660-826-4774

Katy Trail Community Health (KTCH) provides primary health care for our community. KTCH has three locations in central Missouri: Sedalia, Warsaw, and Versailles.

**Pathways Community Health**, 1400 South Limit, 660-826-5885

Pathways offers individual, family and group out-patient counseling for children and adults. Services are designed to reduce symptoms and promote good mental health in a time-effective, compassionate manner through use of:

- Psychological assessments and evaluations
- Individual, family and group counseling
- Crisis intervention—including 24-hour crisis services
- Medication management and psychiatric evaluations

See Appendix for complete listing of all community resources.



## **Appendix**

1. [Community Health Needs Assessment – 2012 Survey](#)
2. [Community Health Needs Assessment – 2012 Survey Summary](#)
3. [Pettis County Resource Directory](#)
4. [Community Health Needs Assessment 2012 County Data Profile: Pettis County](#)
5. [Community Health Needs Assessment 2012 County Data Profile: Benton County](#)
6. [County Health Rankings and Roadmaps: Pettis County](#)
7. [County Health Rankings and Roadmaps: Benton County](#)

# Community Health Needs Assessment Survey

This survey is being conducted by Bothwell Regional Health Center to assess health needs in our community. Responses will remain confidential.

Please return the completed survey where you received it or to the Bothwell Education Center, 600 E. 14<sup>th</sup> St., Sedalia. Participants who complete and return the survey will be entered into a drawing for a \$100 Visa gift card.

## HEALTH BEHAVIORS

1. **How often do you use seat belts when you drive or ride in a car?**  
☐ Always   ☐ Nearly always   ☐ Sometimes   ☐ Seldom   ☐ Never
2. **During the past 12 months, have you received a flu shot?**   ☐ Yes   ☐ No
3. **Have you ever been told by a doctor you had high blood pressure?**   ☐ Yes   ☐ No  
3a. If yes, is any medication currently prescribed for your high blood pressure?   ☐ Yes   ☐ No
4. **Have you ever been told by a doctor you should lose weight for health reasons?**   ☐ Yes   ☐ No
5. **During the past month have you participated in any physical activities or exercise, such as running, walking, golf, etc.?**   ☐ Yes   ☐ No  
5a. If yes, how many times a week do you take part in this activity?   ☐ 1-2 days   ☐ 3-4 days   ☐ 5-7 days  
5b. How many minutes or hours do you usually keep at this activity?  
☐ Less than 30 minutes   ☐ 30-59 minutes   ☐ 60-90 minutes   ☐ More than 90 minutes
6. **Are you currently trying to lose weight?**   ☐ Yes   ☐ No  
6a. If yes, how are you trying to lose weight? (*check all that apply*)  
☐ Eating fewer calories   ☐ Both  
☐ Increasing physical activity   ☐ Other
7. **Have you smoked more than 100 cigarettes in your life?**   ☐ Yes   ☐ No  
7a. If yes, how old were you when you first started smoking regularly? \_\_\_\_\_
8. **Do you smoke now?**   ☐ Yes   ☐ No  
8a. If yes, how many cigarettes do you smoke on an average day? \_\_\_\_\_
9. **Have you ever been told by a doctor that you have one of the following conditions?** (*check all that apply*)  

<input type="checkbox"/> Adult asthma	<input type="checkbox"/> CHF (congestive heart failure)	<input type="checkbox"/> High cholesterol
<input type="checkbox"/> Angina or coronary artery disease	<input type="checkbox"/> Diabetes or high blood sugar	<input type="checkbox"/> Hypertension (high blood pressure)
<input type="checkbox"/> Bacterial pneumonia	<input type="checkbox"/> Heart attack	<input type="checkbox"/> COPD (chronic obstructive pulmonary disease)
<input type="checkbox"/> Cancer   If yes, type: _____	<input type="checkbox"/> Stroke	
10. **Has a child in your household (age 17 or younger) been told by a doctor that they have one of the following conditions?** (*check all that apply*)  
☐ Asthma   ☐ Diabetes   ☐ Overweight or obesity
11. **If a child in your household has asthma, how many times during the past 12 months did you visit an emergency room because of the asthma?**   ☐ None   ☐ 1-2 times   ☐ 3-5 times   ☐ 6 or more times
12. **Has a child in your household (age 17 or younger) used the following?** (*check all that apply*)  
☐ Alcohol   ☐ Drugs   ☐ Tobacco
13. **Has a child in your household (age 17 or younger) become pregnant?**   ☐ Yes   ☐ No

## **MEDICAL CARE AND SERVICES**

14. Including yourself, how many members of your household are disabled? ☐0 ☐1 ☐2 ☐3 or more
15. Including yourself, how many adults (age 18 or older) in your household are in fair-to-poor health? ☐0 ☐1 ☐2 ☐3 or more
16. Is any child (age 17 or younger) in your household in fair-to-poor health? ☐Yes, 1 ☐Yes, 2 or more ☐No
17. How long has it been since you last visited a doctor for a routine check up? A routine check-up is a general visit, not a visit for a specific injury, illness or condition.  
☐Within the past year ☐Within the past two years ☐Within the past five years ☐5 or more years ago ☐Never
18. If your last visit was more than two years ago, is it because you:  
☐Do not have a medical condition that requires any care and you receive health screenings from another provider service ☐Could not schedule due to work or personal conflicts  
☐Do not routinely receive any health screenings ☐Could not afford the payments due, regardless of insurance status  
☐Could not arrange transportation
19. If you or a household member have a health care need:  
Do you have a doctor you can go to? ☐Yes ☐No  
Do you have a dentist you can go to? ☐Yes ☐No  
Do you have a mental health specialist you can go to? ☐Yes ☐No  
Do you have a substance abuse counselor you can go to? ☐Yes ☐No
20. How many times during the past 12 months have you or any household member used a hospital emergency room? (check only one)  
☐None ☐1-2 times ☐3-5 times ☐6 or more times
21. If you or a household member used a hospital emergency room in the past 12 months, was it due to:  
☐An injury that required immediate attention  
☐An injury that did not require immediate attention but it was the most convenient/only service available  
☐A short-term illness  
☐An ongoing illness
22. Have you or anyone in your household had any difficulty finding a doctor within the past two years?  
☐Yes ☐No
- 22a. If yes, briefly, why would you say you had trouble finding a doctor?  
☐Couldn't get a convenient appointment ☐No transportation  
☐Didn't know how to get in contact with one ☐Would not accept your insurance  
☐Doctor was not taking new patients ☐Other \_\_\_\_\_
23. Have you or anyone in your household had any difficulty finding a doctor that treats specific illnesses or conditions in your area within the past 2 years? ☐Yes ☐No
- 23a. If yes, what kind of specialist did you look for?  
☐Bone and joint specialist ☐Diabetes specialist ☐Nerve and brain specialist  
☐Cancer specialist ☐Heart specialist ☐Women's health specialist  
☐Children's specialist ☐Lung and breathing specialist ☐Other \_\_\_\_\_  
☐Dentist ☐Mental health specialist
- 23b. Why were you unable to visit the specialist when you needed one?  
☐No appointments were available ☐Did not have a car or transportation to get to the office  
☐No specialist was available in this area ☐Could not get to the office while they were open  
☐Did not know how to find one ☐Other \_\_\_\_\_  
☐Could not afford to pay for the specialist
24. About how long has it been since you had your blood cholesterol level checked?  
☐Within the past year ☐Within the past five years ☐Never  
☐Within the past two years ☐Over five years ago

25. Have you ever been told by a doctor or other health care professional that your blood cholesterol level is too high? ☐Yes ☐No

26. About how long has it been since your blood was checked for diabetes?

- |  |   |                                |
|--|---|--------------------------------|
| <input type="checkbox"/> Within the past year      | <input type="checkbox"/> Within the past five years | <input type="checkbox"/> Never |
| <input type="checkbox"/> Within the past two years | <input type="checkbox"/> Over five years ago        |                                |

27. Have you ever been told by a doctor or health care professional you have high blood sugar or diabetes?

- ☐Yes ☐No

28. How long has it been since you had an exam or screening for colon cancer?

- |  |   |                                |
|--|---|--------------------------------|
| <input type="checkbox"/> Within the past year      | <input type="checkbox"/> Within the past five years | <input type="checkbox"/> Never |
| <input type="checkbox"/> Within the past two years | <input type="checkbox"/> Over five years ago        |                                |

29. How long has it been since your last mammogram for breast cancer?

- |  |   |                                |
|--|---|--------------------------------|
| <input type="checkbox"/> Within the past year      | <input type="checkbox"/> Within the past five years | <input type="checkbox"/> Never |
| <input type="checkbox"/> Within the past two years | <input type="checkbox"/> Over five years ago        |                                |

30. How long has it been since your last breast exam by a doctor or nurse?

- |  |   |                                |
|--|---|--------------------------------|
| <input type="checkbox"/> Within the past year      | <input type="checkbox"/> Within the past five years | <input type="checkbox"/> Never |
| <input type="checkbox"/> Within the past two years | <input type="checkbox"/> Over five years ago        |                                |

31. How long has it been since your last Pap Smear for female-related cancers?

- |  |   |                                |
|--|---|--------------------------------|
| <input type="checkbox"/> Within the past year      | <input type="checkbox"/> Within the past five years | <input type="checkbox"/> Never |
| <input type="checkbox"/> Within the past two years | <input type="checkbox"/> Over five years ago        |                                |

32. What do you think are the most pressing health problems in your community? (check all that apply)

- |  |   |  |
|--|---|--|
| <input type="checkbox"/> Ability to pay for care               | <input type="checkbox"/> Heart Disease                                  | <input type="checkbox"/> Obesity in children and teenagers     |
| <input type="checkbox"/> Alcohol – dependency or abuse         | <input type="checkbox"/> Lack of health insurance                       | <input type="checkbox"/> Prescription medication too expensive |
| <input type="checkbox"/> Alcohol – underage binge or abuse     | <input type="checkbox"/> Lack of transportation to health care services | <input type="checkbox"/> Teen pregnancy                        |
| <input type="checkbox"/> Drug abuse – prescription medications | <input type="checkbox"/> Lack of dental care                            | <input type="checkbox"/> Tobacco use/smoking among adults      |
| <input type="checkbox"/> Drug abuse – illegal substances       | <input type="checkbox"/> Lack of physical activity                      | <input type="checkbox"/> Tobacco use / smoking among teenagers |
| <input type="checkbox"/> Cancer                                | <input type="checkbox"/> Lack of prenatal care                          | <input type="checkbox"/> Other _____                           |
| <input type="checkbox"/> Child abuse                           | <input type="checkbox"/> Mental health                                  |  |
| <input type="checkbox"/> Cost of health care                   | <input type="checkbox"/> Obesity in adults                              |  |
| <input type="checkbox"/> Domestic violence                     |   |  |

33. What medical services are most needed in your community? (check all that apply)

- |  |  |
|--|--|
| <input type="checkbox"/> Adult primary care services       | <input type="checkbox"/> Heart care services   |
| <input type="checkbox"/> Alcohol and drug abuse treatment  | <input type="checkbox"/> Orthopedic care (bone and joint)                              |
| <input type="checkbox"/> Cancer treatment                  | <input type="checkbox"/> Pediatric services  |
| <input type="checkbox"/> Counseling/mental health services | <input type="checkbox"/> Women's services, such as obstetrics / gynecological services |
| <input type="checkbox"/> Diabetes care                     | <input type="checkbox"/> Other _____   |
| <input type="checkbox"/> Emergency/trauma care             |  |

34. Please select the type(s) of health education services most needed in your community? (check all that apply)

- |  |  |  |
|--|--|--|
| <input type="checkbox"/> Alcohol abuse               | <input type="checkbox"/> Diabetes                      | <input type="checkbox"/> Smoking cessation and/or prevention |
| <input type="checkbox"/> Alzheimer's disease         | <input type="checkbox"/> Diet and/or exercise          | <input type="checkbox"/> Stress management                   |
| <input type="checkbox"/> Asthma                      | <input type="checkbox"/> Drug abuse                    | <input type="checkbox"/> Other _____                         |
| <input type="checkbox"/> Cancer screening            | <input type="checkbox"/> HIV/AIDS                      |  |
| <input type="checkbox"/> Child abuse/family violence | <input type="checkbox"/> Sexually transmitted diseases |  |

35. What health or community services should Bothwell Regional Health Center provide that are currently not available?

---

---

---

## DEMOGRAPHICS

36. What is your ZIP code? \_\_\_\_\_

37. Gender? ☐ Male ☐ Female

38. What is your race?

- ☐ Asian ☐ Native Hawaiian / Other Pacific Islander  
☐ Black / African American ☐ White / Caucasian  
☐ Native American / Alaska Native

39. What is your ethnicity?

- ☐ African – Ethiopian, Nigerian, etc. ☐ Ukrainian / Russian ☐ Hispanic / Latino  
☐ Central or South American ☐ European – Italian, German, French, etc. ☐ Other \_\_\_\_\_

40. What are the ages of the people who live in your household?

Yourself	<input type="checkbox"/> 18-24	<input type="checkbox"/> 25-44	<input type="checkbox"/> 45-54	<input type="checkbox"/> 55-64	<input type="checkbox"/> 65+				
Person 2	<input type="checkbox"/> 0-35 mos.	<input type="checkbox"/> 3-5	<input type="checkbox"/> 6-12	<input type="checkbox"/> 13-17	<input type="checkbox"/> 18-24	<input type="checkbox"/> 25-44	<input type="checkbox"/> 45-54	<input type="checkbox"/> 55-64	<input type="checkbox"/> 65+
Person 3	<input type="checkbox"/> 0-35 mos.	<input type="checkbox"/> 3-5	<input type="checkbox"/> 6-12	<input type="checkbox"/> 13-17	<input type="checkbox"/> 18-24	<input type="checkbox"/> 25-44	<input type="checkbox"/> 45-54	<input type="checkbox"/> 55-64	<input type="checkbox"/> 65+
Person 4	<input type="checkbox"/> 0-35 mos.	<input type="checkbox"/> 3-5	<input type="checkbox"/> 6-12	<input type="checkbox"/> 13-17	<input type="checkbox"/> 18-24	<input type="checkbox"/> 25-44	<input type="checkbox"/> 45-54	<input type="checkbox"/> 55-64	<input type="checkbox"/> 65+
Person 5	<input type="checkbox"/> 0-35 mos.	<input type="checkbox"/> 3-5	<input type="checkbox"/> 6-12	<input type="checkbox"/> 13-17	<input type="checkbox"/> 18-24	<input type="checkbox"/> 25-44	<input type="checkbox"/> 45-54	<input type="checkbox"/> 55-64	<input type="checkbox"/> 65+
Person 6	<input type="checkbox"/> 0-35 mos.	<input type="checkbox"/> 3-5	<input type="checkbox"/> 6-12	<input type="checkbox"/> 13-17	<input type="checkbox"/> 18-24	<input type="checkbox"/> 25-44	<input type="checkbox"/> 45-54	<input type="checkbox"/> 55-64	<input type="checkbox"/> 65+

41. What is your highest level of education?

- ☐ Left high school without a diploma ☐ Currently attending or have some college ☐ 4-year college degree  
☐ High school diploma ☐ 2-year college degree ☐ Graduate-level degree  
☐ GED

42. How many household members are currently covered by health insurance?

Number of adults covered by health insurance: \_\_\_\_\_

Number of children covered by health insurance: \_\_\_\_\_

Number of household members not covered by insurance: \_\_\_\_\_

43. If you or members of your household have health insurance coverage, how is it obtained? (check all that apply)

- ☐ Medicare ☐ Through an employer's health insurance plan  
☐ Medicaid ☐ Veterans' Administration  
☐ Through a retirement insurance plan ☐ Privately purchased

8a. Do any of these insurance policies provide dental coverage? ☐ Yes ☐ No

8b. Do any of these insurances pay for prescription drugs?

☐ Yes, with co-payment ☐ Yes, with no co-payment ☐ No

44. Are medical, dental or prescription costs a large enough problem that you postpone or go without services or prescriptions? ☐ Yes ☐ No

45. Do you have trouble getting transportation to health care services? ☐ Yes ☐ No

46. Counting all income sources from everyone in your household, what was the combined household income last year? (check only one)

- |  |  |  |
|--|--|--|
| <input type="checkbox"/> Less than \$20,000  | <input type="checkbox"/> \$40,000 - \$59,999 | <input type="checkbox"/> \$80,000 - \$99,999 |
| <input type="checkbox"/> \$20,000 - \$39,999 | <input type="checkbox"/> \$60,000 - \$79,999 | <input type="checkbox"/> \$100,000 or more   |

47. How would you describe your housing situation? (check only one)

- |   |  |  |
|---|--|--|
| <input type="checkbox"/> Own house or condo                           | <input type="checkbox"/> Living in a group home                      | <input type="checkbox"/> Living in a shelter                               |
| <input type="checkbox"/> Rent a house, apartment or room              | <input type="checkbox"/> Living in a motel                           | <input type="checkbox"/> Multiple households sharing an apartment or house |
| <input type="checkbox"/> Living temporarily with a friend or relative | <input type="checkbox"/> Living in senior housing or assisted living | <input type="checkbox"/> Other (explain): _____                            |

Thank you for taking time to complete this survey.

Please return the completed survey where you received it or to the Bothwell Education Center, 600 E. 14<sup>th</sup> St., Sedalia, and you will receive an entry slip for the drawing. Complete the entry slip in order to be entered into the drawing for the \$100 Visa gift card.

**Bothwell Regional Health Center**  
**Community Health Needs Assessment - Summary of Responses**

**How often do you use seat belts when you drive or ride in a car?**

Answer Options	Response Percent	Response Count
Always	74.1%	297
Nearly always	15.2%	61
Sometimes	6.2%	25
Seldom	3.2%	13
Never	1.2%	5

**During the past 12 months, have you received a flu shot?**

Answer Options	Response Percent	Response Count
Yes	67.6%	271
No	32.4%	130

**Have you ever been told by a doctor you had high blood pressure?**

Answer Options	Response Percent	Response Count
Yes	39.2%	157
No	60.8%	244

**If yes, is any medication currently prescribed for your high blood pressure?**

Answer Options	Response Percent	Response Count
Yes	79.0%	124
No	21.0%	33

**Have you ever been told by a doctor you should lose weight for health reasons?**

Answer Options	Response Percent	Response Count
Yes	39.3%	157
No	60.8%	243

**During the past month have you participated in any physical activities or exercise, such as running, walking, golf, etc.?**

Answer Options	Response Percent	Response Count
Yes	77.2%	308
No	22.8%	91

**If yes, how many times a week do you take part in this activity?**

Answer Options	Response Percent	Response Count
1-2 days	45.8%	141
3-4 days	35.1%	108
5-7 days	19.2%	59

**How many minutes or hours do you usually keep at this activity?**

Answer Options	Response Percent	Response Count
Less than 30 minutes	32.8%	101
30-59 minutes	53.9%	166
60-90 minutes	10.4%	32
More than 90 minutes	2.9%	9

**Are you currently trying to lose weight?**

Answer Options	Response Percent	Response Count
Yes	58.8%	233
No	41.2%	163

If yes, how are you trying to lose weight?		
Answer Options	Response Percent	Response Count
Eating fewer calories	31.8%	74
Increasing physical activity	10.7%	25
Both	62.2%	145
Other (please specify)	7.3%	17

Have you smoked more than 100 cigarettes in your life?		
Answer Options	Response Percent	Response Count
Yes	43.7%	173
No	56.3%	223

If yes, how old were you when you first started smoking regularly?	
Average Age	17.4

Do you smoke now?		
Answer Options	Response Percent	Response Count
Yes	16.2%	64
No	83.8%	332

If yes, how many cigarettes do you smoke on an average day?	
Average # of cigarettes/day	Response Count
	15

Have you ever been told by a doctor that you have one of the following conditions?		
Answer Options	Response Percent	Response Count
Adult asthma	6.6%	26
Angina or coronary artery disease	2.0%	8
Bacterial pneumonia	2.8%	11
CHF (congestive heart failure)	2.0%	8
Diabetes or high blood sugar	12.6%	50
Heart attack	3.3%	13
Stroke	2.3%	9
High cholesterol	30.3%	120
Hypertension (high blood pressure)	29.3%	116
COPD (chronic obstructive pulmonary)	2.3%	9
None	42.9%	170
Cancer (please specify type)	10.4%	41

Are there children in your household?		
Answer Options	Response Percent	Response Count
Yes	43.0%	170
No	57.0%	225

Has a child (age 17 or younger) in your household been told by a doctor that they have one of the following conditions?		
Answer Options	Response Percent	Response Count
Asthma	21.1%	36
Diabetes	0.6%	1
Overweight or obesity	9.4%	16
None of these	71.9%	123

**If a child in your household has asthma, how many times during the past 12 months did you visit an emergency room because of the asthma?**

Answer Options	Response Percent	Response Count
None	83.3%	30
1-2 times	16.7%	6
3-5 times	0.0%	0
6 or more times	0.0%	0

**Has a child in your household (age 17 or younger) used the following?**

Answer Options	Yes	No	Unsure	Response Count
Alcohol	10	157	3	170
Drugs	6	162	0	168
Tobacco	9	158	1	168

**Has a child in your household (age 17 or younger) become pregnant?**

Answer Options	Response Percent	Response Count
Yes	1.2%	2
No	98.8%	168

**Including yourself, how many members of your household are disabled?**

Answer Options	Response Percent	Response Count
0	83.2%	328
1	14.0%	55
2	2.3%	9
3 or more	0.5%	2

**Including yourself, how many adults (age 18 or older) in your household are in fair-to-poor health?**

Answer Options	Response Percent	Response Count
0	77.2%	304
1	17.0%	67
2	5.6%	22
3 or more	0.3%	1

**Is any child (age 17 or younger) in your household in fair-to-poor health?**

Answer Options	Response Percent	Response Count
Yes, 1	2.0%	8
Yes, 2 or more	0.3%	1
Child(ren) in good health	40.4%	159
There are no children in my household	57.4%	226

**How long has it been since you last visited a doctor for a routine check up? A routine check-up is a general visit, not a visit for a specific injury, illness or condition.**

Answer Options	Response Percent	Response Count
Within the past year	74.1%	292
Within the past two years	11.2%	44
Within the past five years	4.8%	19
5 or more years ago	5.1%	20
Never	4.8%	19



**If you've never had a routine check up or if your last visit was more than two years ago, is it because you:**

Answer Options	Response Percent	Response Count
Do not have a medical condition that requires	32.8%	19
Do not routinely receive any health	32.8%	19
Could not schedule due to work or personal	5.2%	3
Could not afford the payments due,	29.3%	17
Could not arrange transportation	1.7%	1
Other (please specify)	10.3%	6

**If you or a household member have a health care need: Do you have a doctor you can go to?**

Answer Options	Response Percent	Response Count
Yes	96.4%	380
No	3.6%	14

**If you or a household member have a health care need: Do you have a dentist you can go to?**

Answer Options	Response Percent	Response Count
Yes	84.8%	334
No	15.2%	60

**If you or a household member have a health care need: Do you have a mental health specialist you can go to?**

Answer Options	Response Percent	Response Count
Yes	37.6%	148
No	62.4%	246

**If you or a household member have a health care need: Do you have a substance abuse counselor you can go to?**

Answer Options	Response Percent	Response Count
Yes	27.4%	108
No	72.6%	286

**How many times during the past 12 months have you or any household member used a hospital emergency room?**

Answer Options	Response Percent	Response Count
None	60.9%	240
1-2 times	33.5%	132
3-5 times	5.1%	20
6 or more times	0.5%	2

**If you or a household member used a hospital emergency room in the past 12 months, was it due to:**

Answer Options	Response Percent	Response Count
An injury that required immediate attention	49.4%	76
An injury that did not require immediate	9.1%	14
A short-term illness	39.0%	60
An ongoing illness	15.6%	24

**Have you or anyone in your household had any difficulty finding a doctor within the past two years?**

Answer Options	Response Percent	Response Count
Yes	13.8%	54
No	86.2%	337

**If yes, briefly, why would you say you had trouble finding a doctor?**

Answer Options	Response Percent	Response Count
Couldn't get a convenient appointment	16.7%	9
Didn't know how to get in contact with one	9.3%	5
Doctor was not taking new patients	59.3%	32
No transportation	1.9%	1
Would not accept your insurance	24.1%	13
Other (please specify)	27.8%	15

**Have you or anyone in your household had any difficulty finding a doctor that treats specific illnesses or conditions in your area within the past 2 years?**

Answer Options	Response Percent	Response Count
Yes	22.1%	86
No	77.9%	304

**If yes, what kind of specialist did you look for?**

Answer Options	Response Percent	Response Count
Bone and joint specialist	25.6%	22
Cancer specialist	2.3%	2
Children's specialist	10.5%	9
Dentist	7.0%	6
Diabetes specialist	12.8%	11
Heart specialist	9.3%	8
Lung and breathing specialist	4.7%	4
Mental health specialist	9.3%	8
Nerve and brain specialist	9.3%	8
Women's health specialist	4.7%	4
Other (please specify)	41.9%	36

**Why were you unable to visit the specialist when you needed one?**

Answer Options	Response Percent	Response Count
No appointments were available	7.0%	6
No specialist was available in this area	60.5%	52
Did not know how to find one	3.5%	3
Could not afford to pay for the specialist	23.3%	20
Did not have transportation to get to the office	3.5%	3
Could not get to the office while they were	2.3%	2
Other (please specify)	23.3%	20

**About how long has it been since you had your blood cholesterol level checked?**

Answer Options	Response Percent	Response Count
Within the past year	61.1%	237
Within the past two years	12.9%	50
Within the past five years	10.6%	41
Over five years ago	4.9%	19
Never	10.6%	41

**Have you ever been told by a doctor or other health care professional that your blood cholesterol level is too high?**

Answer Options	Response Percent	Response Count
Yes	40.2%	156
No	59.8%	232

**About how long has it been since your blood was checked for diabetes?**

Answer Options	Response Percent	Response Count
Within the past year	57.7%	224
Within the past two years	10.6%	41
Within the past five years	9.3%	36
Over five years ago	6.4%	25
Never	16.0%	62

**Have you ever been told by a doctor or health care professional you have high blood sugar or diabetes?**

Answer Options	Response Percent	Response Count
Yes	16.2%	63
No	83.8%	325

**How long has it been since you had an exam or screening for colon cancer?**

Answer Options	Response Percent	Response Count
Within the past year	15.2%	59
Within the past two years	10.1%	39
Within the past five years	13.9%	54
Over five years ago	8.8%	34
Never	52.1%	202

**How long has it been since your last mammogram for breast cancer?**

Answer Options	Response Percent	Response Count
Within the past year	33.2%	129
Within the past two years	6.7%	26
Within the past five years	5.9%	23
Over five years ago	2.8%	11
Never	30.2%	117
Not a female	21.1%	82

**How long has it been since your last breast exam by a doctor or nurse?**

Answer Options	Response Percent	Response Count
Within the past year	67.1%	206
Within the past two years	16.0%	49
Within the past five years	7.5%	23
Over five years ago	7.2%	22
Never	2.3%	7

**How long has it been since your last Pap Smear for female-related cancers?**

Answer Options	Response Percent	Response Count
Within the past year	53.3%	163
Within the past two years	20.9%	64
Within the past five years	11.1%	34
Over five years ago	12.1%	37
Never	2.6%	8

**What do you think are the most pressing health problems in your community?**

Answer Options	Response Percent	Response Count
Ability to pay for care	67.9%	262
Alcohol - dependency or abuse	27.5%	106
Alcohol - underage binge or abuse	13.5%	52
Drug abuse - prescription medications	29.5%	114
Drug abuse - illegal substances	43.8%	169
Cancer	32.1%	124
Child abuse	9.8%	38

Cost of health care	56.7%	219
Domestic violence	12.2%	47
Heart Disease	26.7%	103
Lack of health insurance	52.3%	202
Lack of transportation to health care services	21.2%	82
Lack of dental care	30.6%	118
Lack of physical activity	38.3%	148
Lack of prenatal care	5.4%	21
Mental health	18.9%	73
Obesity in adults	55.2%	213
Obesity in children and teenagers	46.9%	181
Prescription medication too expensive	37.0%	143
Teen pregnancy	25.9%	100
Tobacco use/smoking among adults	40.7%	157
Tobacco use / smoking among teenagers	35.2%	136
Other (please specify)	6.2%	24

#### What medical services are most needed in your community?

Answer Options	Response Percent	Response Count
Adult primary care services	45.1%	174
Alcohol and drug abuse treatment	27.2%	105
Cancer treatment	21.2%	82
Counseling/mental health services	26.4%	102
Diabetes care	21.0%	81
Emergency/trauma care	28.0%	108
Heart care services	18.1%	70
Orthopedic care (bone and joint)	14.5%	56
Pediatric services	13.7%	53
Women's services (obstetrics / gynecological)	15.0%	58
Other (please specify)	22.8%	88

#### Please select the type(s) of health education services most needed in your community?

Answer Options	Response Percent	Response Count
Alcohol abuse	32.9%	127
Alzheimer's disease	20.7%	80
Asthma	10.4%	40
Cancer screening	35.2%	136
Child abuse/family violence	25.9%	100
Diabetes	34.2%	132
Diet and/or exercise	54.1%	209
Drug abuse	33.2%	128
HIV/AIDS	8.5%	33
Sexually transmitted diseases	24.4%	94
Smoking cessation and/or prevention	37.3%	144
Stress management	41.2%	159
Other (please specify)	15.0%	58

#### What health or community services should Bothwell Regional Health Center provide that are currently not available? - Top 3 Answers

Mental Health services  
Urgent Care facilities both in Pettis and Benton Counties  
Dental services for adults with Medicaid / Medicare

#### What is your ZIP code? - Top 3 Answers

	Response Count
Sedalia, MO 65301	239
Warsaw, MO 65355	57
Cole Camp, MO	18

What is your gender?		
Answer Options	Response Percent	Response Count
Male	21.6%	83
Female	78.4%	301

What are the ages of the people who live in your household?	
0-35 months	43
3-5 years	44
6-12 years	121
13-17 years	84
18-24 years	64
25-44 years	259
45-54 years	145
55-64 years	140
65+ years	119

What is your race?		
Answer Options	Response Percent	Response Count
Asian	0.3%	1
Black / African American	2.1%	8
Native American / Alaska Native	1.6%	6
Native Hawaiian / Other Pacific Islander	0.3%	1
White / Caucasian	97.1%	373

What is your ethnicity?		
Answer Options	Response Percent	Response Count
African - Ethiopian, Nigerian, etc.	1.6%	6
Central or South American	6.0%	23
Ukrainian / Russian	1.6%	6
European - Italian, German, French, etc.	44.5%	171
Hispanic / Latino	3.9%	15
Other (please specify)	44.3%	170

What is your highest level of education?		
Answer Options	Response Percent	Response Count
Left high school without a diploma	2.1%	8
High school diploma	22.7%	87
GED	2.9%	11
Currently attending or have some college	19.5%	75
2-year college degree	23.7%	91
4-year college degree	17.2%	66
Graduate-level degree	12.0%	46

How many household members are currently covered by health insurance?			
Answer Options	Response Average	Response Total	Response Count
Adults	1.75	644	368
Children	1.72	310	180
Household members not covered by	.64	94	147

If you or members of your household have health insurance coverage, how is it obtained?		
Answer Options	Response Percent	Response Count
Medicare	30.0%	115
Medicaid	15.4%	59
Through a retirement insurance plan	7.3%	28
Through an employer's health insurance plan	62.1%	238
Veterans' Administration	4.7%	18
Privately purchased	13.6%	52
Do not have health insurance coverage	3.7%	14

Do any of these insurance policies provide dental coverage?		
Answer Options	Response Percent	Response Count
Yes	66.2%	247
No	33.8%	126

Do any of these insurances pay for prescription drugs?		
Answer Options	Response Percent	Response Count
Yes, with co-payment	89.0%	332
Yes, with no co-payment	7.2%	27
No	3.8%	14

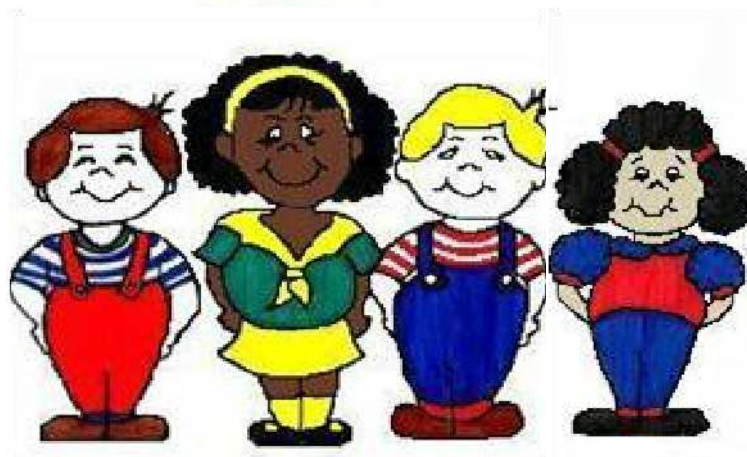
Are medical, dental or prescription costs a large enough problem that you postpone or go		
Answer Options	Response Percent	Response Count
Yes	43.6%	167
No	56.4%	216

Do you have trouble getting transportation to health care services?		
Answer Options	Response Percent	Response Count
Yes	5.2%	20
No	94.8%	363

Counting all income sources from everyone in your household, what was the combined		
Answer Options	Response Percent	Response Count
Less than \$20,000	16.2%	62
\$20,000 - \$39,999	24.3%	93
\$40,000 - \$59,999	24.8%	95
\$60,000 - \$79,999	15.7%	60
\$80,000 - \$99,999	11.7%	45
\$100,000 or more	7.3%	28

How would you describe your housing situation?		
Answer Options	Response Percent	Response Count
Own house or condo	76.4%	292
Rent a house, apartment or room	18.3%	70
Living temporarily with a friend or relative	1.3%	5
Living in a group home	0.0%	0
Living in a motel	0.0%	0
Living in senior housing or assisted living	0.3%	1
Living in a shelter	0.0%	0
Multiple households sharing an apartment or	1.0%	4
Other (please specify)	2.6%	10

# Pettis County Resource Directory



**2012**

**Pettis County Community Partnership**

515 South Kentucky  
Sedalia, Missouri 65301  
(660) 827-0560 [www.PettisCommunityPartners.org](http://www.PettisCommunityPartners.org)





# Table of Contents

What Does Pettis County Community Partnership Offer? . . . . .	4
Several Tips to Seeking and Receiving Services as You Utilize this Guide . . . . .	5
Emergency Numbers . . . . .	6
Government Numbers	
City Offices . . . . .	6
County Offices . . . . .	7
State and Federal Offices . . . . .	8
Crisis Hotlines and Services . . . . .	9
Counseling . . . . .	10
Support Groups . . . . .	11
Educational Services . . . . .	12
Resources for Persons with Disabilities . . . . .	13
In-Home Care Resources. . . . .	13
Internet Access . . . . .	13
Employment Services . . . . .	14
Food Help . . . . .	16
Homeless Shelters . . . . .	14
Housing Services . . . . .	15
Medical Services . . . . .	17
In Home Services. . . . .	18
Military Services/Veteran Services . . . . .	18
Multicultural Services . . . . .	19
Churches with Services in Languages other than English . . . . .	19
Senior Services . . . . .	18
Spanish-Speaking Translators . . . . .	19
Transportation Services . . . . .	21
Utility Services . . . . .	20
Utility Assistance . . . . .	20
Other Missouri Help Numbers . . . . .	8
Alphabetical Listing of County Service Providers . . . . .	22
Quick Guide . . . . .	26

# What Does Pettis County Community Partnership Offer?

## **Pettis County Community Partnership (PCCP)**

515 South Kentucky Avenue  
Sedalia, MO 65301

(660) 827-0560, voice (660) 827-0633, fax

[www.pettiscommunitypartners.org](http://www.pettiscommunitypartners.org)

**Early Childhood Resources:** We support home- and center-based day care providers in Pettis County through professional development training, a resource library of educational toys as well as educational videos and materials for providers.

**Retired and Senior Volunteer Program (RSVP):** Helps seniors put life skills and experience to work in our community addressing critical community needs. Our volunteers provide over 30,000 hours of service annually with education, health, social services, transportation, and assistance to nonprofit organizations.

**Youth and Family Services:** Adolescent Coalition and the following:

**Choosing the Best:** Research-based prevention program motivates youth to choose abstinence.

**Baby Think it Over:** Teen pregnancy prevention program utilizes computerized dolls that simulate what it is like to care for an infant. Also includes abstinence and infant safety. Available to schools, youth groups, scouts, and teen organizations in the county.

**Unique, That's Me!** A self-esteem program for 3<sup>rd</sup> and 4<sup>th</sup> grade girls. Helps develop the skills and tools necessary to face life's challenges. Activities enable the girls to use daily experiences to help build an understanding of what self-esteem is and learn how to recognize and foster it.

**Activity Builders for Children-ABC:** The ABC group works to raise money so foster children may have the funds for full participation in school and community life. ABC has provided fees for activities such as community sports, extra school events, class rings, senior pictures, and graduation announcements.

**MRCC Food Co-op:** Partnering with the Missouri Rural Crisis Center, once each month we are able to offer people approximately \$50 worth of groceries for \$22. Co-op members pay an annual membership fee of \$10 and the \$22 monthly co-op fee- each month they receive a supply of food which includes bread, produce, paper products, and canned goods, as well as MRCC's own Patchwork Farms meat products. Additional meat may be ordered at reasonable rates. All participants of the food cooperative must be current MRCC members. Anyone may participate, regardless of income.

**P.R.O.P. – Putting Roofs Over People:** PCCP, Sedalia Housing Authority, MO Valley CAA, Open Door, Salvation Army, Habitat for Humanity, DFS, Sedalia Schools, The Embassy, churches, businesses, and individuals work together to combat homelessness and provide transitional housing assistance. The P.R.O.P. coalition is a mix of 75 or so service-providers and caring people working to help the homeless and hurting. Program includes case management for families utilizing PROP's assistance. Assistance will be provided to those who qualify as funds are available. Applications accepted first week of every month.

**MO Re-Entry Process Steering Group:** Community partners share and coordinate resources around housing, education, family support, employment, mental health and other issues. All with an interest in reentry are welcome to attend. Meetings are held on the first Monday of each month at noon in the PCCP conference room.

**“THE ROC” – Reentry Opportunity Center:** After a strengths and needs assessment, ex-offenders can work with our staff to develop a plan for successful reentry and find out where to access what they need to have a smoother transition back to the community.

**Multicultural Services:** Cherishing diversity of our residents, PCCP strives to heighten cultural awareness.

## **Other services currently available through PCCP include:**

**West Central Missouri Multicultural Forum:** Brings people and regional resources together to proactively (and reactively if necessary) address issues relating to education, health and welfare, business and industry, law enforcement, government, transportation, and community service learning. The Forum meets the first Wednesday of March, June, September, and December.

**Literacy Center:** Offers adult education and GED preparation.

**Sabados Latinos:** This 2 hour radio program brings news, school, health, and community information to local residents whose first language is Spanish. The public service time is donated by KSIS radio (1050 AM) and is staffed by local volunteers. Aired from 9:30-11:30 am on Saturdays.

**Family Nutrition Education (Spanish):** Helps families learn how a well balanced meal promotes child development and adult health.

**Cultural Awareness Activities:** Events such as Martin Luther King Day, Make A Difference Day, and Global Village.

## **Open monthly meetings hosted by Pettis County Community Partnership:**

- **Missouri Re-Entry Process (MRP) of Pettis County**--addressing re-entry issues: 1<sup>st</sup> Monday at noon.
- **Inter-Agency of Pettis County**--addressing community needs: 2<sup>nd</sup> Monday at noon.
- **P.R.O.P. Putting Roofs Over People**--addressing homelessness issues: 4<sup>th</sup> Monday at 9:30 to 11:00 am.
- **And others. . .**

## **Several tips to seeking and receiving services as you utilize this guide:**

Don't always use the phone to call an agency and expect services: most do nothing over the phone. If you have a question that you want answered, feel free to call and ask. However, if you are seeking services, service-providers require you to be in their office, in-person, with documentation of need.

You are more likely to receive assistance if you are nice, kind, and grateful rather than demanding and ugly. Be patient and kind and know that there are thousands of households that need help and no-one can help everyone.

Learn to write thank you notes to people. Whether you receive services or get information or not, write a thank you note expressing appreciation that someone was there to try to help you. You don't need to say much, nor use perfect words with perfect penmanship. You can write it on the back of a sack or any piece of paper. Just say a simple "Thank You" to those who are trying to serve and help people. Service providers rarely receive these and it will make a difference! It's also a good habit.

## EMERGENCY NUMBERS

City	Ambulance	Non-Emergency Ambulance	Fire	Non-Emergency Fire	Police	Non-Emergency Police
Green Ridge	911	826-7400	911	826-6464	911	827-0052
Hughesville	911	826-7400	911	826-6464	911	827-0052
La Monte	911	827-0052	911	826-6464	911	347-5106 827-0052
Sedalia	911	826-7400	911	826-8044	911	826-8100
Smithton	911	826-7400	911	343-5432	911	827-0052

**Pettis County Sheriff**, 333 S. Lamine [www.pettiscountysheriff.com](http://www.pettiscountysheriff.com) 827-0052

**Mo State Highway Patrol Troop A**, Missouri State Fair Grounds, [www.dps.state.mo.us](http://www.dps.state.mo.us) 530-5627

**Pettis County Crime Stoppers**, 403 S. Lamine <http://www.pettiscountysheriff.com/crime-stoppers>  
827-8477

## LOCAL GOVERNMENT: City Offices

City	Department	Location	Zip	Phone
Green Ridge	City Hall	104 W. Pettis St.	65332	527-3541
Hughesville	Town Hall	Main Street	65334	827-5150
LaMonte	City Hall	107 North Main	65337	347-5606
Sedalia	Municipal Building	200 South Osage	65301	827-3000
<a href="http://ci.sedalia.mo.us">http://ci.sedalia.mo.us</a>				
	Animal Control			826-8100
	Animal Shelter	2900 West Main		826-5816
	Building Inspector			827-3000 ext.148
	City Collector			827-3000 ext.136
	Community Center	314 S. Washington	65301	827-3747
	Fire Chief	600 S. Hancock	65301	826-8044
	Housing Authority	500 Welch Court	65301	827-1400
	Housing Specialist	200 South Osage	65301	827-3000
	Mayor			827-3000 ext.144
	Park Department	3 <sup>rd</sup> & Park	65301	826-1845
	Planning & Zoning			827-3000
	Police Chief			827-3000 ext.166
	Post Office	405 East 5 <sup>th</sup> Street	65301	826-8887
<a href="http://www.spl.lib.mo.us">www.spl.lib.mo.us</a>	Public Library	311 West 3 <sup>rd</sup> St.	65301	826-1314
	Public Works Dept.			827-3000 ext.141
	Sanitation Department	901 East 3 <sup>rd</sup> Street	65301	827-3000
	Senior Center	312SouthWashington		826-0713
	Street Department	901 West 3 <sup>rd</sup> Street	65301	826-3357

**Sedalia Area Chamber of Commerce**, 600 E. 3<sup>rd</sup> St. (Katy Depot), [www.sedaliachamber.com](http://www.sedaliachamber.com) 826-2222

**Sedalia Convention & Visitors Bureau**, 600 E. 3<sup>rd</sup> St. (Katy Depot), [www.visitsedaliamo.com](http://www.visitsedaliamo.com) 827-5295

**Sedalia Downtown Development**, 303 S. Ohio Ave, 827-6461

**Pettis County Emergency Management**, 319 S. Lamine, [www.pettiscomo.com/home.html](http://www.pettiscomo.com/home.html) 827-4800

**Economic Development Sedalia-Pettis County** [www.SedaliaMoED.com](http://www.SedaliaMoED.com)  
3615 West Broadway, 3rd Floor, 827-0884

## LOCAL GOVERNMENT: County Offices

County	Department	Location	Zip	Phone
Pettis County	Court House	415 South Ohio	65301	660-826-5000
<a href="http://www.pettiscomo.com">www.pettiscomo.com</a>	Auditor		65301	
	Circuit Clerk		65301	
	Collector		65301	
	County Assessor		65301	
	County Clerk		65301	
	County Commission		65301	
	Division 6		65301	
	Prosecuting Attorney		65301	
	Public Administrator		65301	
	Recorder of Deeds		65301	

**Pettis County Crime Stoppers**, 403 S. Lamine, <http://www.pettiscountysheriff.com/crime-stoppers> 827-8477

**Pettis County Health Department**, 911 East 16<sup>th</sup> Street, [www.pettis.lphamo.org](http://www.pettis.lphamo.org) 827-1130, WIC 827-4599  
Pettis County Health Center is a local public health agency that is supported by local taxes, by reimbursement from federal and state programs and by a sliding fee-for-service scale based on household income. Available services include general health and wellness screens, communicable disease control activities including immunizations, numerous child and adolescent health/safety programs, women's health services, WIC (Women, Infants, and Children) Food Supplement Program, and environmental public health services. Certified Copies of Birth and Death certificates are available in the office for a fee, but only if the birth or death occurred in Missouri. It is the policy of the Pettis County Health Center to provide equal services to all applicants without regard to race, color, religion, gender, age, national origin, political belief, veteran status, and physical or mental disability.

**Pettis County Jail**, 333 S. Lamine, <http://www.pettiscountysheriff.com/divisions/corrections> 827-0056

**Pettis County Juvenile Office**, 403 S. Lamine, Suite 9, [www.pettiscomo.com](http://www.pettiscomo.com) 827-1062

**Pettis County Road Department**, Main & State Fair Boulevard , [www.pettiscomo.com](http://www.pettiscomo.com) 826-7187

**Pettis County Sheriff's Department**, 319 South Lamine, [www.pettiscountysheriff.com](http://www.pettiscountysheriff.com) 827-0052

## State and Federal Offices

<b><u>Missouri Department of Conservation</u></b> , Sedalia Service Center 2000 South Limit, Sedalia, MO 65301	<a href="http://www.conservation.state.mo.us">www.conservation.state.mo.us</a> 530-5500
<b><u>Department of Corrections, Probation &amp; Parole</u></b> 205 Thompson Road, Sedalia, MO 65301	<a href="http://www.corrections.state.mo.us">www.corrections.state.mo.us</a> 530-5530
<b><u>Department of Health and Senior Services</u></b> , 808 Westwood, <a href="http://www.health.state.mo.us">www.health.state.mo.us</a>	530-5525
<b><u>Department of Natural Resources</u></b> , State Parks Division, <a href="http://www.dnr.state.mo.us">www.dnr.state.mo.us</a> 19349 Bothwell State Park Road, Sedalia, MO 65301	827-0510
<b><u>Family Support and Children's Division</u></b> , 808 Westwood, <a href="http://www.dss.mo.gov/fsd">www.dss.mo.gov/fsd</a> ,	530-5900
<b><u>Missouri Driver's Licenses Testing Location</u></b> (written & driving), Highway Patrol Office, Missouri State Fairgrounds, Mondays & Tuesdays 8 am-12pm; 1pm-3pm;	530-5515
<b><u>Missouri Motor Vehicle, Drivers, &amp; Marine Licensing</u></b> (Missouri Dept of Revenue), 3155 West Broadway, in Thompson Hills Shopping Center,	826-3316
<b><u>Missouri State Fair</u></b> , Connected to the National Guard Armory Building 2503 West 16 <sup>th</sup> Street, Sedalia, MO 65301	<a href="http://www.mostatefair.com">www.mostatefair.com</a> 800-422-3247 or 827-8150
<b><u>Social Security Administration</u></b> , 3404 West 10 <sup>th</sup> Street, <a href="http://www.ssa.gov">www.ssa.gov</a>	1-877-405-5459
<b><u>Office for Civil Rights</u></b> Region VII-Kansas City 601 East 12 <sup>th</sup> Street Room 248, Kansas City, MO 64106	TDD (816) 426-7065 (816) 426-7277
<b><u>State Government Information</u></b>	(573) 751-2000
<b><u>U.S.D.A- Agriculture Department</u></b> -1407 W. 32 <sup>nd</sup> St. Sedalia	826-3339
<b><u>U.S. Postal Service</u></b> , 405 East 5 <sup>th</sup> Street, <a href="http://www.usps.com">www.usps.com</a>	826-8887
<b><u>Missouri Commission on Human Rights</u></b> - P.O. Box 1129, Jefferson City, MO 65102	(573) 751-3325
<b><u>Missouri Career Center (Sedalia Career Center)</u></b> - 215 E. 5 <sup>th</sup> St. Sedalia	530-5627

## Other Missouri Help Numbers

<b>Adoption Line and Foster Care</b>	800-544-2222
<b>American Heart Association</b>	800-323-7883
<b>Arson Hot Line, Fire Marshal</b>	800-392-7766
<b>Auto Safety Hot-Line, National Highway Traffic Safety Recall Information</b>	800-424-9393
<b>Child Support Enforcement</b>	800-859-7999
<b>Communicable Disease, Dept. of Health</b>	800-392-0272
<b>Consumer Hot Line, Missouri Attorney General's Office</b>	800-392-8222
<b>Council on Disabilities</b>	800-877-8249
<b>EBT Helpline</b>	800-997-7777
<b>HUD-Federal Agency-Discrimination, Fair Housing &amp; Equal, Opportunity Hot Line</b>	800-669-9777
<b>Highway Patrol Road Conditions</b>	800-222-6400
<b>Legal Aid of Western Missouri (non-criminal matters)</b>	800-892-2943
<b>Missouri Tourism</b>	800-877-1234
<b>Public Service Commission, Utility Complaints</b>	800-392-4211
<b>SIDS (Sudden Infant Death Syndrome) Resources</b>	800-421-3511
<b>Social Security Administration, 3320 West 10<sup>th</sup> Street,</b>	800-772-1213 827-4709
<b>Veterans' Administration</b>	800-827-1000
<b>Welfare Fraud, Family Support System</b>	800-392-1261

# Who can I turn to in a crisis?

## Crisis Hotlines

<b><u>Adult Abuse Hotline</u></b>	1-800-392-0210
<b><u>Child Abuse Hotline</u></b>	1-800-392-3738
<b><u>Domestic Violence Hotline</u></b>	State-Wide 1-800-799-SAFE (7233)      Local (CASA) 1-800-894-1151
<b><u>Elderly Abuse Hotline</u></b>	1-800-392-0210
<b><u>Mid-Missouri Crisis Line</u></b>	1-888-761-4357
<b><u>Missing Children Hot Line</u></b>	1-800-843-5678
<b><u>Parental Stress Helpline</u></b>	1-800-367-2543
<b><u>Parents Anonymous of Missouri</u></b>	1-816-765-6600
<b><u>Poison Control Center - Missouri Regional Poison Center</u></b> 7980 Clayton Road Suite 200, St. Louis, MO 63117	<a href="http://www.poisson.org">www.poisson.org</a> 1-800-222-1222
<b><u>Runaway Children National Hotline</u></b> To Leave a Message for Parents from Child/or from Parent to Child	1-800-621-4000
<b><u>Runaway Hotline</u></b>	1-800-HIT-HOME (448-4663)
<b><u>Runaway Children National Hotline</u></b> , Shelter-Medical Assistance	800-231-6946
<b><u>Suicide Hotline</u></b>	1-800-SUICIDE (784-2433)
<b><u>Youth Crisis Hotline</u></b>	1-800-442-4673

## Crisis Help

**American Red Cross**, 112 West 4<sup>th</sup> Street, <http://american.redcross.org/pettiscountyhome> 827-0618  
After hours emergencies: same number. Non-profit, humanitarian organization led by volunteers that provides relief to victims of disasters and helps military personnel, veterans and their dependents. The chapter sponsors hospital volunteers, first aid, CPR and swimming lessons, lifeguard training and HIV-AIDS educational programs, and community blood drives. Also provides emergency assistance to families in crisis.

**Battered Women Hotline** 800-333-7233

**Birthright**, 1810 West 11<sup>th</sup> Street, [www.birthright.org](http://www.birthright.org) 826-9060 or 1-800-550-4900 24 hrs  
Provides emergency pregnancy support services, free pregnancy testing, baby and maternity clothing and items, alternatives to abortion, information on adoption and baby development, and community referrals for assistance. All of our services are free. Hours are M-F, noon – 4 p.m.; others by appointment.

**Children's Division**, 808 Westwood, [www.dss.mo.gov/fsd](http://www.dss.mo.gov/fsd) 530-5900  
Formerly Division of Family Services, Children's Division- Responds to calls regarding abuse and neglect of children. Administers Foster Parent Program, including recruiting foster parents and overseeing their training. If you suspect abuse, call the **Child Abuse Hotline** at 1-800-392-3738.

**Child Safe of Central Missouri, Inc.**, 102 East 10<sup>th</sup> Street, [www.childsafehouse.org](http://www.childsafehouse.org) 888-829-3434  
Provides services and referrals to victims of child sexual or physical abuse. Provides resources for the fight against and prevention of child sexual and physical abuse.

**Citizens Against Spouse Abuse (CASA)**

827-5555 or 1-800-894-1151

Women's shelter & Rape Crisis Center, crisis intervention counseling, temporary emergency shelter, referrals, children's programs, self-help and support groups, advocates, crisis response team, and Batterers Intervention Program. Also provides: Speakers' bureau for community education and awareness, programs available to groups, institutions, and schools, In-Service Training for all persons working with victims of physical and domestic violence, and Specialized Programs for business/industry, clergy, and medical & social service agencies.

**Family Support Division**, 808 Westwood, [www.dss.mo.gov/fsd](http://www.dss.mo.gov/fsd)

530-5900

Formerly Division of Family Services. Public assistance including food stamps, temporary assistance, and Medicaid.

**Missouri Valley Community Action Agency**, 505 South Kentucky, [www.mvcaa.net](http://www.mvcaa.net)

826-0804

MVCAA Administrative Office, 1415 South Odell, Marshall, MO 65340

886-7476

Provides Section 8 Rental Assistance, Emergency Services- Rent, Weatherization, Housing Partnership, Head Start, and Adult/Family Literacy. Head Start, 314 South Washington, 826-0651, 353 Buckner Court, 826-9931.

**Open Door Benevolent Ministries**, 111 West 6<sup>th</sup> Street,

827-1613

Food Pantry assists poverty-level individuals. Limited emergency financial assistance for rent and utilities.

**Salvation Army**

Community Center, 1200 E. Broadway, 826-1525,  
Thrift Store, 1305 S. Limit, 826-4769,

Social Services, 1200 E. Broadway, 826-1525,  
Thrift Store, 601 S. Ohio, 826-5553.

For those who qualify the following services are available: food assistance is available once a month, rental assistance, referrals to homeless shelters, and prescription assistance. Provides soup kitchen Monday–Friday from 12:00–1:00 at 1200 E. Broadway. Also has cooperative Summer Feeding Program, clothing vouchers for qualifying applicants, and more available through main office at 1200 E. Broadway.

## Where can I get counseling?

**Bothwell Regional Health Center Hospice**, 3143 W. Broadway, [www.brhc.org](http://www.brhc.org)

829-2700

**Burrell Behavioral Health**, 201 West 3rd,

827-2494

Provides information and referral, assessment, counseling, medication, crisis services, mental illness and substance abuse treatment, community psychiatric rehabilitation, case management, and education.

**Central States Mental Health Consultants**, 108 West 5<sup>th</sup> Street,

1-800-870-0019, 827-0019

SATOP (State Alcohol Traffic Offenders Program), individual substance abuse counseling, anger control, and misdemeanor probation supervision.

**Community Counseling Services**, 1721 S. Ingram,

827-9875

Provides individual and family counseling, parenting classes, and anger management. Drug and Alcohol Relapse Prevention Specialist on staff. Medicaid accepted.

**Grief Consultant, LLC**, Connie Tinsley, Certified Thanatologist. 1917 W. Lamine Ave.,

660-851-0616

**Harlan, Margaret Dr.**, 108 East 5<sup>th</sup> Street,

827-4449

**Kitto, Gary C. Dr. & Associates**, 100 South Limit,

826-7909

**Mefford, Vuagniaux & Associates PC**, 121 East Broadway,

826-2380

**NAMI Representatives**, Glenn Sherman, 2601 Wesley Court, [www.nami.org](http://www.nami.org)

827-2514

Meets 3:00 pm each Sunday at Boonslick Regional Library. First Sunday of each month is for Caretakers and Consumers. Second through fourth Sundays are for Consumers only.

**Pathways**, 1400 South Limit Suite 9, [www.pathwaysonline.org](http://www.pathwaysonline.org)

826-5885

A not-for-profit community mental health center that provides comprehensive psychiatric, substance abuse treatment, prevention and education, and 24-hour crisis services. Pathways has recently merged with Royal Oaks Hospital, Windsor, which allows for an even greater continuum of care for the consumers, individuals and families that Pathways serves. For more info or Royal Oaks Hospital, contact the corporate office or visit us on the web listed above.

**Psychological Consultants of Sedalia**, 3001 Clinton Road,

829-1133

**Recovery Lighthouse**, 417 W. Pettis,

827-HELP (827-4357)

**Waldo, Dr. Susan**, 103 East 4<sup>th</sup> Street,

826-0440



## Are there any support groups in Pettis County?

<b><u>Alcoholics Anonymous</u></b> , Ditzfeld Recovery Center, 417 West Pettis, Meets Monday – Saturday at Noon and 7 p.m. and Sunday at 10 a.m. and 7 p.m. All open meetings. Alcoholics Anonymous also meets at 517 South Lafayette, Meet Monday and Saturday 8 p.m. for open meetings. Also has closed meetings.	829-2527  826-9608
<b><u>Spanish Speaking</u></b> , 984 West Morgan, Marshall, MO 65340, Meet Monday–Sunday 7–9 p.m.,	886-9783
<b><u>Alzheimer’s Support Group</u></b> , Bothwell Regional Health Center, 601 East 14 <sup>th</sup> Street, Support group for families of individuals who have Alzheimer’s available by appointment only, Linda Fisher.	281-4371
<b><u>Alzheimer’s Support Group</u></b> , Ridge Crest Nursing Center, 706 South Mitchell, Warrensburg, MO 64093 Support group for family members of individuals who have Alzheimer’s disease.	429-2177
<b><u>A.W.A.K.E Sleep Support Group</u></b> , Bothwell Regional Health Center, 600 E. 14 <sup>th</sup> St. Quarterly meetings, 5:30 p.m. the fourth Monday of each month- January, April, July, and October.	827-9320
<b><u>Cancer Support Group – High Hopes</u></b> , Bothwell Regional Health Center, 600 East 14 <sup>th</sup> Street, To provide a social network with others who face similar difficulties. For all patients and their families. Meetings are held the 3 <sup>rd</sup> Tuesday of each month from 5:00–7:00.	829-8835
<b><u>Celebrate Recovery</u></b> , The purpose of the Celebrate Recovery Ministry is to spend time together and Celebrate God’s healing power in our lives through the Eight Recovery Principles based on the beatitudes. Cornerstone Baptist Church, 19856 HWY Y, Monday night, dinner 6:00 p.m., meeting at 7:00 p.m. Also, at Antioch Fellowship, 507 W. 24 <sup>th</sup> St., Sedalia, Mo.	827-4833
<b><u>Diabetes Support Group</u></b> , at Bothwell Health Center, 600 E. 14 <sup>th</sup> . Meetings are 4:30 p.m. on the third Tuesday of each month Please call Diabetic Department. 827-9334	
<b><u>Domestic Violence Support Group</u></b>	CASA 827-5559 Shelter Hotline 827-5555
<b><u>First Baptist Church</u></b> , 200 East 6 <sup>th</sup> Street, Provides Community ministry; Buckner Apartment on-site ministry; grief support and youth ministries.	826-2160
<b><u>NAMI Mental Health Support Group</u></b> , at PCCP, Glenn Sherman, 2601 Wesley Court, Sedalia, MO 65301 Meets 3:00 pm each Sunday at Boonslick Regional Library. First Sunday of each month is for Caretakers and Consumers. Second through fourth Sundays are for Consumers only.	827-2514
<b><u>New Attitudes Weight Loss Support Group</u></b> , Christ & Trinity Lutheran Church, 3201 Southwest Boulevard, Meets the first Wednesday of each month.	827-5898
<b><u>New Haven</u></b> , P.O. Box 2311, 65302, Residential Facility for abused/neglected boys/girls.	826-8673
<b><u>New Hope Baptist Church</u></b> , 664 East 16 <sup>th</sup> Street, Provides addiction support groups, relationship support groups, and abuse recovery.	826-6277
<b><u>Parent Link</u></b> , <a href="http://outreach.missouri.edu/parentlink">http://outreach.missouri.edu/parentlink</a> Dedicated to answering any parenting questions.	800-552-8522 Relay Missouri 800-735-2966
<b><u>Stroke Survivors Support Group</u></b> , Bothwell Regional Health Center, 600 East 14 <sup>th</sup> Street, Meetings are held the 1 <sup>st</sup> Friday of each month from 11:00 – 12:00. (Does not meet in January or July)	827-9136
<b><u>There is Hope Christian Ministries</u></b> , 660 East 16 <sup>th</sup> Street, <b>24-hour Help Line, (888) 660-HOPE (4673)</b> . Provides pregnancy tests, counseling by trained lay-counselors, information about pregnancy, abortion and alternatives, and abstinence support.	826-1225
<b><u>TOPS Chapter No. 958</u></b> , First Baptist Church, 200 East 6 <sup>th</sup> Street, Provides group support for sensible weight loss. (Take Off Pounds Sensibly)	826-2160

## What educational services are available?

- Boys' & Girls Club of Sedalia**, 314 South Washington, 3100 Aaron Ave.-Main office Sedalia 826-8331  
Provides after-school programs at area public elementary schools. Smithton 343-3700
- Buckner Head Start Preschool Program**, 358 Buckner Court, 826-9931
- Bureau of Child Care** [www.acf.hhs.gov/programs/ccb](http://www.acf.hhs.gov/programs/ccb) [www.sos.state.mo.us/adrules/csr/current/19csr/19c30-60.pdf](http://www.sos.state.mo.us/adrules/csr/current/19csr/19c30-60.pdf)  
P.O. Box 320, Warrensburg, MO 64093 (660) 747-2751  
Provide assistance on licensing and certification for in-home day care providers.
- C.A.C.T.U.S. Community and Children Teaming Up for Success** [www.sedaliacactus.org](http://www.sedaliacactus.org)  
Provides school supplies to needy children. 827-0263
- Center for Human Services (CHS)**, 1500 Ewing Drive, [www.chs-mo.org](http://www.chs-mo.org) 826-4400  
Cooperative Workshop 827-2100  
Services and supports to individuals with disabilities. Adult services include community living, employment, service coordination, and a sheltered workshop. Children's services are provided through the Children's Therapy Center.
- Child Care Aware**, [www.mo.childcareaware.org](http://www.mo.childcareaware.org) 800-243-9685  
Free services for parents, children, and providers. They offer home and classroom strategies, classroom observation, referrals for parents, educational materials, information about community resources, links to schools and series, and other requests as needed.
- Children's Therapy Center**, 4515 W. Main, [www.chs-mo.org](http://www.chs-mo.org) 827-4400  
MO First Steps, 827-5004. Early Head Start, Therapeutic Aquatics, Early intervention, comprehensive child and family development services, water exercise, swim lessons, and water walking, and education services for children.
- Driver's Training**, Willie Jenkins 826-9228
- Family Child Care Association** 826-8437  
Provide support for family child care providers and opportunities to build new relationships and network with other providers. Monthly support meetings held in provider's homes.
- Literacy Center**, 515 South Kentucky Ave., [www.pettiscommunitypartners.org](http://www.pettiscommunitypartners.org) 827-0560  
Outreach of State Fair Community College. Offers GED preparation.
- Missouri Valley Community Action Agency**, 505 South Kentucky, [www.mvcaa.net](http://www.mvcaa.net) 826-0804  
MVCAA Administrative Office, 1415 South Odell, Marshall, MO 65340, 886-7476  
Provides Section 8 Rental Assistance, Emergency Services-rent, Weatherization, Housing Partnership, Head Start, Adult/Family Literacy, and Career Services. Head Start, 314 S. Washington, 826-0651, 353 Buckner, 826-9931.
- Parents as Teachers**, Early Childhood Cooperative, 2255 S. Ingram, [www.sedalia200.org](http://www.sedalia200.org) 827-8955  
A voluntary and free program that provides practical, effective help for all Missouri families with children birth to 3 years (not enrolled in kindergarten). A trained parent educator provides private in-home visits.
- Pettis County Early Childhood Cooperative**, 2255 S. Ingram, [www.sedalia200.org](http://www.sedalia200.org) 827-8955  
Parents as Teachers (PAT) & Early Childhood Special Education Services (ECSE), Title Pre-School.
- Sedalia Area Literacy Council**, 515 South Kentucky, 827-0560  
The mission of the Sedalia Area Literacy Council is *Building a Reader and a Library One Book at a Time*. The goals of the Council are to formulate and participate in programs that will increase the literacy rate, promote reading, and link local business, education, and the community.
- Sedalia Housing Authority**, 500 Welch Court, 827-1400  
Provides low-income housing, library and computer lab with internet access available for use by residents, CASA office on-site, and Head Start-Buckner Court.
- Sedalia School District #200**, 2806 Matthew Drive, [www.sedalia200.com](http://www.sedalia200.com) 829-6450  
Providing public education to children Pre-K (Early Childhood Special Education/Title I Preschool) through 12<sup>th</sup> grade.
- State Fair Community College Adult Basic Education**, 3201 W. 16<sup>th</sup> St., [www.sfcc.cc.mo.us](http://www.sfcc.cc.mo.us) 530-5815  
GED classes and full array of community college courses, improve reading, comprehension, improve math skills, citizenship test preparation, English-as-a-Second Language, Asset/Act test preparation, and work place literacy safety.

**University of Central Missouri**, Warrensburg, MO 64093, [www.ucmo.edu](http://www.ucmo.edu) 800-666-1461 (660) 543-8321  
Child Care Resource Referral Line–Workshop on Wheels. Also, literature, child care training, resource lending library, advocacy information, and accreditation.

**University of Missouri Extension/Lincoln University**, 1012 A Thompson Boulevard, 827-0591  
Programs include: Anger Management, Positive Discipline & Self-Esteem, Successful Aging, 4-H Youth Development, Building Strong Families, activities & leisure, Creativity Emotional Well Being, Intelligence, Memory & Learning, Relationships, Intimacy, Companionship, and Family, Volunteerism, Work, and **Focus on Kids**. Helping kids cope with divorce; parenting, plans, mediations separation. Call for class schedule and fee information.

**Washington Neighborhood Caring Communities** 829-4223

## Where can I find resources for persons with disabilities?

**Center for Human Services (CHS)**, 1500 Ewing Drive, [www.chs-mo.org](http://www.chs-mo.org) 826-4400  
Cooperative Workshop is 827-2100. Services and supports to individuals with disabilities. Adult services include community living, employment, service coordination, and a sheltered workshop. Children’s services are provided through the Children’s Therapy Center.

**Central Missouri Regional Center**, 319 South Lamine, [www.dmh.mo.gov/cmrc](http://www.dmh.mo.gov/cmrc), 530-5700  
**MRDD/Division of Mental Retardation Developmental Disabilities**. Assists persons with developmental disabilities, who meet guidelines, access services they want and need (i.e. Case management, information, referrals, and advocacy).

**Employment of People with Disabilities**, Governor’s Committee 800-877-8249

**The President’s Committee for Employment of Persons with Disabilities** 202-653-5044, voice  
1111 20<sup>th</sup> Street NW, Washington, DC 20036, (202) 653-5050 (TDD), (202) 653-7386 (Fax)  
For information on how to accommodate a specific individual with a disability call Job Accommodation Network at: 800-526-7234, Voice/TDD, or 800-ADA-WORK, voice/TDD.

**Vocational Rehabilitation**, 2115 West Broadway, Retraining for the disabled. 530-5560

**WILS -West-Central Independent Living Solutions**, 1018-B Thompson Boulevard, <http://www.w-ils.org> 829-1980  
1-866-558-5588. Provides consumer-controlled, community-based options promoting independence for people with disabilities including: Independent Living Services, Transportation Services, Attendant Services, Housing, Recreational Services, Therapeutic Services, Internet Access, Computer Access, ADA Info and Technical Assistance, Employment Info, and Assistive Technology “loan closet.”

## Where can I go to access the Internet?

**Boonslick Regional Library**, 219 West 3<sup>rd</sup> Street, 827-7111

**Sedalia Public Library**, 311 West 3<sup>rd</sup> Street, 826-1314

**Sedalia Housing Authority**, 500 Welch Court, 827-1400

## What services are available to help me find a job?

**Missouri Career Center**, 215 East 5<sup>th</sup> Street, [www.missouricareersource.com](http://www.missouricareersource.com) 530-5627  
Assessment of skills, abilities, and needs; access to employment services, labor market information, job-search, and job-placement assistance; information on training, education, vocational rehabilitation, and credit counseling services.

**Michael J. Bruns** Veteran's Representative/DVOP - (417) 276-8647

The Division of Workforce Development has staff throughout the state dedicated to assisting veterans with career transition and employment services. Specialists are available to provide case management and develop career and job training opportunities for veterans, with special emphasis on veterans with service-connected disabilities.

**Workforce Development Board, Inc. of Western Missouri**, 3208 West 16<sup>th</sup> Street, 827-3722  
Develop, establish, and maintain streamlined local employment/training delivery system in WIA 4.

**Pettis County Community Partnership—P.R.O.P. Office**, 515 S. Kentucky Ave, 827-0560  
Has Free Resume Guide to do-your-own Skill-Based Resume with Guide, templates, and samples of cover letters, Resumes, Reference Pages, Thank You notes, and the steps of the entire process of developing a potential employment situation that you truly want. Pick one up Free in the lobby. Limited assistance is available to help you, too.

**Experience Works—Senior Work Solutions**, POB 188, Clinton, MO 64735 [www.experienceworks.org](http://www.experienceworks.org) 800-368-7569

**OSHA**, [www.osha.gov](http://www.osha.gov), Kansas City Area is 800-892-2674, St. Louis Area is 800-392-7743. If unsafe conditions persist in environment, you have right to report to the Occupational Safety and Healthy Administration (OSHA)

**@Work Personnel Services (Temporary Staffing Agency)**, 1710 West 9<sup>th</sup> Street, 826-9300

**Diversified Staffing (Temporary Staffing Agency)**, 1400 South Limit, 826-4862

## Are there any homeless shelters in the area?

**CASA**, (Domestic and Homeless Shelter), 827-5555 or 1-800-894-1151  
For women who have been a victim of domestic violence.

**City Union Mission**, Kansas City, MO, (816) 474-9380

**The Embassy**, Men's- 322 W. 7th, Family House- 602 S. Moniteau, Sedalia, Mo. 281-3211  
The Embassy exists to offer rest, refuge and restoration in the midst of a hostile environment to men and families in need. Our vision is to equip and empower people in despair to live healthy, enjoyable, and productive lives.

**Faith House**, Clinton, MO, Transitional Housing, (660) 885-6067, Domestic violence shelter 800-801-7883

**Harbor House**, 602 N. Ann, Columbia MO 65202, (573) 442-1984

**Harvest House**, Booneville, MO, Homeless, transitional shelter, (660) 882-3286

**House of Hope**, Lexington MO, (660) 259-4766

**Lighthouse**, Marshall, MO, Domestic Violence shelter, (660) 831-0988 1-888-259-6795

**Salvation Army Center for Hope Housing**, Jefferson City, MO, Families and Individuals), (573) 635-1975

## Where can I get help with housing?

**American Red Cross**, 112 West 4<sup>th</sup> Street, [www.redcross.org](http://www.redcross.org) 827-0618  
After hours emergencies only 827-2149. Non-profit, humanitarian organization led by volunteers that provides relief to victims of disasters and helps military personnel, veterans and their dependents. The chapter sponsors hospital volunteers, first aid, CPR and swimming lessons, lifeguard training and HIV-AIDS educational programs, and community blood drives. Also provides emergency assistance to families in crisis.

**Citizens Against Spouse Abuse (CASA)**, 827-5555 or 1-800-894-1151  
Women's shelter & Rape Crisis Center, crisis intervention counseling, temporary emergency shelter, referrals, children's programs, self-help and support groups, advocates, crisis response team, and Batterers Intervention Program. Also provide: Speakers' bureau for community education and awareness, with programs available to groups, institutions, and schools, In Service Training for all persons working with victims of physical and domestic violence, and Specialized Programs for business/industry, clergy, medical & social service agencies.

**Commerce Building Lofts**, 224 South Ohio 826-1279  
Affordable housing.

**Habitat for Humanity**, P.O. Box 1523, [www.sedaliahabitatforhumanity.org](http://www.sedaliahabitatforhumanity.org) 826-1918  
Habitat for Humanity International is a nonprofit, ecumenical Christian housing ministry. Seeks to eliminate poverty housing and homelessness from the world, and to make decent shelter a matter of conscience and action. Habitat invites people of all backgrounds, races and religions to build houses together in partnership with families in need.

**Lincoln Hubbard Apartments**, 711 N. Osage, 827-5171  
Affordable housing for persons 55 and older.

**Missouri Valley Community Action Agency**, 505 South Kentucky, [www.mvcaa.net](http://www.mvcaa.net) 826-0804  
**MVCAA Administrative Office**, 1415 South Odell, Marshall, MO 65340, 886-7476  
Provides Section 8 Rent Assistance, Emergency Services-rent, Weatherization, Housing, Head Start, Adult/Family Literacy, and Career Services. Head Start, 314 South Washington, 826-0651, 353 Buckner Court, 826-9931.

**Pettis County Fund for Frail Elderly**, 808 Westwood Avenue, 530-5525  
Housing assistance for seniors and assistance for purchasing prescription medication for those who qualify.

**Putting Roofs Over People (P.R.O.P.)**, Pettis County Community Partnership, 515 S. Kentucky, 827-0560  
Provides rental assistance for those who qualify. Assistance depends on availability of funds. Applications accepted the first week of every month for one-time assistance. Also helps with birth certificates.

**Olsen West Apartments**, 883 Olsen Road 827-2484  
Affordable housing for persons 65 and older.

**Saddlewood Apartments**, 3201 10<sup>th</sup> Street 826-6133  
Affordable housing for elderly.

### **Salvation Army**

Community Center, 1200 E. Broadway, 826-1525, Social Services, 1200 E. Broadway, 826-1525,  
Thrift Store, 1305 S. Limit, 826-4769, Thrift Store, 601 S. Ohio, 826-5553.  
For those who qualify the following services are available: food assistance is available once a month, rental assistance, referrals to homeless shelters, and prescription assistance. Provides soup kitchen Monday–Friday from 12:00–1:00 at 1200 E. Broadway. Also has cooperative Summer Feeding Program, clothing vouchers for qualifying applicants, and more available through main office at 1200 E. Broadway.

**Sedalia Heights**, 900 Westwood Ave 829-1588  
Affordable housing.

**Sedalia Housing Authority**, 500 Welch Court, 827-1400  
Provides low-income housing, library and computer lab with internet access available for use by residents, CASA office on-site, and Head Start-Buckner Court.

**Sedalia Villa**, 904 Winchester Drive 829-1588  
Affordable housing.

**There is Hope Christian Ministries**, 660 East 16<sup>th</sup> Street, 826-1225  
**24-hour Help Line: (888) 660-HOPE (4673)**. Provides pregnancy tests, counseling by trained lay-counselors, information about pregnancy, abortion and alternatives, and abstinence support.

## Where can I get help with food?

**Community Café**, 417 West Pettis, Provides free meal. Monday-Friday 5:00-6:00 pm

**Family Support Division**, 808 Westwood, 530-5900  
Formerly Division of Family Services. Offers public assistance programs including: food stamps, temporary assistance, and Medicaid.

**Meals on Wheels**, 2311 West Main, 826-5039 Meal Delivery

**MRCC Food Co-op**, Pettis County Community Partnership, 515 South Kentucky, 827-0560  
Partnering with the Missouri Rural Crisis Center, once each month we offer people approximately \$50 worth of groceries for \$22. Co-op members pay an annual membership fee of \$10 and the \$22 monthly co-op fee, then each month they receive a supply of food includes bread, produce, paper products, and canned goods, as well as MRCC's own Patchwork Farms meat products. Additional meat may be ordered at reasonable rates. All participants of the cooperative must be current MRCC members. There are no income restrictions.

**Open Door Benevolent Ministries**, 111 West 6<sup>th</sup> Street, 827-1613  
Food Pantry gives assistance to poverty-level individuals. Limited emergency financial assistance.

**Pettis County Health Center**, 911 East 16<sup>th</sup>, [www.pettis.lphamo.org](http://www.pettis.lphamo.org) 827-1130 **WIC 827-4599**  
Pettis County Health Center is a local public health agency that is supported by a special county tax, by reimbursement from federal and state programs and by a sliding fee-for-service scale based on household income. Available services include general health and wellness screens, communicable disease control activities including immunizations, numerous child and adolescent health/safety programs, women's health services,

**WIC (Women, Infants, and Children) Food Supplement Program**, and environmental public health services. Certified Copies of Birth and Death certificates are available in the office for a fee, but only if the birth or death occurred in Missouri.

It is the policy of Pettis County Health Center to provide equal services to all applicants without regard to race, color, religion, gender, age, national origin, political belief, veteran status, and physical or mental disability.

### **Salvation Army**

Community Center, 1200 E. Broadway, 826-1525,  
Thrift Store, 1305 S. Limit, 826-4769,

Social Services, 1200 E. Broadway, 826-1525,  
Thrift Store, 601 S. Ohio, 826-5553.

For those who qualify the following services are available: food assistance is available once a month, rental assistance, referrals to homeless shelters, and prescription assistance. Also provides soup kitchen Monday–Friday from 12:00–1:00 at 1200 E. Broadway. Also has cooperative Summer Feeding Program, clothing vouchers for qualifying applicants, and more available through main office at 1200 E. Broadway.

**Sedalia Senior Center**, 312 South Washington. Serve and deliver meals to seniors, 826-0713



## What medical services are available?

**Bothwell Regional Health Center**, 601 East 14<sup>th</sup> Street, [www.brhc.org](http://www.brhc.org) 826-8833

**Central Missouri Regional Center**, 818 Westwood, [www.dmh.mo.gov/cmrc](http://www.dmh.mo.gov/cmrc) 530-5700

**MRDD/Division of Mental Retardation Developmental Disabilities**. Assists persons with developmental disabilities, who meet guidelines, access services they want/need (Case management, information & referrals, and advocacy).

**Dental Hygiene Clinic at State Fair Community College**, [www.sfccmo.edu](http://www.sfccmo.edu) 596-7406

3201 West 16th Street. Accepting appointments for patients of all ages and conditions of teeth. Donate your time and teeth and provide the students in the Dental Hygiene program valuable clinical experience. Services include: exam, cleaning, child cleaning and fluoride, bitewing radiographs, full mouth radiographs, and scaling and planning.

**Family Support Division**, 808 Westwood Drive, 530-5900  
Financial assistance and food stamps for those who qualify. Health insurance if meet income guidelines.

**Katy Tail Community Health**, 821 Westwood Drive, 1-877-733-5824 and 826-4774

**Katy Trail Dental** 826-1908. Provides emergency dental services to adults and children; preventative and restorative services to children. Katy Trail Community Health accepts all forms of insurance including MC+ plans and Medicaid.

**MO HealthNet for Kids**, Missouri's Health Insurance Program, [www.dss.mo.gov/mhk](http://www.dss.mo.gov/mhk) 888-275-5908

**Pettis County Fund for Frail Elderly**, 808 Westwood Avenue, 530-5525  
Housing assistance for qualifying seniors and for purchasing prescription medication.

**Pettis County Health Center**, 911 East 16<sup>th</sup> Street, [www.pettis.lphamo.org](http://www.pettis.lphamo.org) 827-1130

Pettis County Health Center is a local public health agency that is supported by local taxes, by reimbursement from federal and state programs and by a sliding fee-for-service scale based on household income. Available services include general health and wellness screens, communicable disease control activities including immunizations, numerous child and adolescent health/safety programs, women's health services, WIC (Women, Infants, and Children) Food Supplement Program, and environmental public health services. Certified Copies of Birth and Death certificates are available in the office for a fee, but only if the birth or death occurred in Missouri. It is the policy of Pettis County Health Center to provide equal services to all applicants without regard to race, color, religion, gender, age, national origin, political belief, veteran status, and physical or mental disability.

**Prescription Drug Drop Box**, 319 S. Lamine Ave 827-0052  
Located in the Pettis County Sheriff's Office lobby. The lobby is open 24 hours a day, seven days a week and expired prescription medication can be dropped off at any time.

**Rx Outreach**, [www.rxoutreach.com](http://www.rxoutreach.com) 1-800-769-3880  
A new patient assistance program (PAP) that offers low-cost prescription drugs to uninsured individuals and families as well as those who have limited prescription drug coverage.

### **Salvation Army**

Community Center, 1200 E. Broadway, 826-1525, Social Services, 1200 E. Broadway, 826-1525,  
Thrift Store, 1305 S. Limit, 826-4769, Thrift Store, 601 S. Ohio, 826-5553.  
For those who qualify the following services are available: food assistance is available once a month, rental assistance, referrals to homeless shelters, and prescription assistance. Also provides soup kitchen Monday–Friday from 12:00–1:00 at 1200 E. Broadway. Also has cooperative Summer Feeding Program, clothing vouchers for qualifying applicants, and more available through main office at 1200 E. Broadway.

### **Tel-Link**

800-TEL-LINK 800-835-5465  
Monday-Friday (8am-5pm), recorded message for all other times Tel-Link will connect you to: Local Health Departments, Social Service Agencies, Community Health centers, prenatal clinics, Crisis pregnancy centers, Family planning clinics, Woman, Infants and Children (WIC) agencies, Well-child clinics, Child care resource and referral agencies, Pediatric and delivering hospitals, Child support enforcement agencies, Area offices for children with special health care needs, Domestic violence shelters, Alcohol and drug abuse treatment centers, Sexual assault centers, Sexually Transmitted Diseases (STDs) Treatment Centers, Mental Health Centers, Non-emergency medical transportation services (Medicaid-eligible only), and Other health care agencies.

**University of Missouri School of Dentistry**, [www.umkc.edu](http://www.umkc.edu) (816) 235-2100

## What In - Home Services are available?

**Bothwell Home Health**, Bothwell Regional Health Center, 601 East 14<sup>th</sup> Street, [www.brhc.org](http://www.brhc.org) 829-2700  
Home health-care services for the elderly, the ill and the disabled provided by skilled nurses and therapists on a part-time, intermittent basis under the direction of a physician within a 35-mile radius of Sedalia. Infusion therapy also is available.

Bothwell Home Health provides the care needed to allow individuals to stay in the comfort of their own homes longer. These services include professional nursing; treatments such as dressing changes, catheter care and injections; diabetic care and instruction; IV therapy; speech and language therapy; physical and occupational therapy; assistance with social problems affecting the progress or stability of the patient's medical condition; and Lifetime Alert Service.

## What Senior Services are available?

**Bothwell Regional Health Center** 826-8833  
Home Health and Hospice Services, 829-2700, Diabetes Education, 827-9334.

**Sedalia Senior Center /District III Area Agency on Aging**, 312 South Washington, 826-0713  
Foster fellowship and support healthy, independent living for older persons, serve and deliver meals, information & assistance services, nutrition and health education, health screening, assistance with insurance questions, housing and home safety information, Medicare/Medicaid assistance, consumer education, elder abuse education and tax assistance, Transportation services, Senior Community Service Employment Program, legal Assistance, In-Home services, homemaker chore, personal care, and rest for caregiver, telephone reassurance and visiting.

**Senior & Disability Services/Pettis County Fund for Frail & Elderly**, 808 Westwood Avenue, 530-5525  
Housing assistance for qualifying seniors and assistance for purchasing prescription medication.

**Sedalia Senior Services / Pettis County**, 808 Westwood, 530-5525  
Promote and maintain the quality of life for older adults and persons with disabilities, investigate allegations of abuse, neglect and exploitation as reported via the: **Adult Abuse Hotline. . . (800) 392-0210** Intervention to prevent institutionalization, which may include: personal care, homemaker, nursing, meal preparation, etc.

**University of Missouri Extension/ Lincoln University**, 1012 A Thompson Boulevard, 827-0591  
Anger Management, Positive Discipline & Self-Esteem, Successful Aging, 4-H Youth Development, Building Strong Families, Successful Aging Program, Activities & Leisure, Creativity Emotional Well Being, Intelligence, Memory & Learning, Relationships, Intimacy, Companionship, and Family, Volunteerism, and Work.

## What Military Services are available?

**Child Care Aware of Missouri-Give Army Parents a Break** (866) 892-3228  
Call if you are looking for free child care support to: run errands, attend appointments, have quiet time, workout, grocery shop, read a book, and more. Qualified families include deployed Army National Guard and deployed Army Reserve, Army Recruiters, Drill Sergeants, and ROTC Cadre.

## What Veteran's Services are available?

**Missouri Career Center: Michael J. Bruns** (417) 276-8647  
Veteran's Representative/DVOP. The Division of Workforce Development has staff throughout the state dedicated to assisting veterans with career transition and employment services. Specialists are available to provide case management and develop career and job training opportunities for veterans, with special emphasis on veterans with service-connected disabilities. Intensive services also available.



## Are there any churches with services in languages other than English?

<b><u>Amigos de Cristo</u></b> , 11 <sup>th</sup> & Thompson Boulevard, Services in <b>Spanish</b>	826-2788
<b><u>First Baptist Church of Sedalia</u></b> , 200 East 6 <sup>th</sup> Street, Services in <b>Spanish</b>	826-2160
<b><u>First United Methodist Celebration Center</u></b> , 1701 West 32 <sup>nd</sup> Street, Services in <b>Spanish</b>	827-2993
<b><u>Parkview Christian Church</u></b> , 1405 East 16 <sup>th</sup> Street, Services in <b>Ukrainian</b>	826-3624 or 366-4394
<b><u>Primera Iglesia Bautista</u></b> , 201 East 6 <sup>th</sup> Street, Services in <b>Spanish</b>	826-0621
<b><u>St. Patrick's Catholic Church</u></b> , 415 East 4 <sup>th</sup> Street, Services in <b>Spanish</b>	826-2062
<b><u>The Slavic Christian Church</u></b> , 520 South Osage, Services in <b>Ukrainian</b>	
<b><u>Word of Life Evangelical Christian Church</u></b> , 3851 South Park, Services in <b>Ukrainian</b>	

## What multicultural services are available?

**Literacy Center at the Pettis County Community Partnership**, 515 South Kentucky, 827-0560  
Offers adult education and GED preparation classes. Hours: Monday- Wednesday 9am-1pm.

### **The Missouri Multicultural Network**

<http://www.mssc.edu/missouri/>

A project of the Institute of International Studies at Missouri Southern State College in Joplin, MO. Locate information in English and Spanish about: Banking, Community, Education, Immigration, Internet/telephone, Language, Law/legal services, Media, Public Safety, Refugee Resettlement, Religion, Employment, Fire Protection, Health, Housing, Social Services, Transportation, and utilities. Free online citizenship course (prepare for INS naturalization process). <http://www.mssc.edu/missouri/citizenship.htm>

### **Sabados Latinos**

826-1050 800-748-8354

Radio program that brings news, school, health and community information to local residents whose first language is Spanish. Time is donated by KSIS radio (1050 AM) and staffed by local volunteers. Program hours are 10:00 am to 12:00 pm on Saturdays.

**State Fair Community College Adult Basic Education**, 3201 W. 16<sup>th</sup> Street, [www.sfcc.cc.mo.us](http://www.sfcc.cc.mo.us) 530-5815

GED classes in addition to full array of community college courses, improve reading, comprehension, improve math skills, citizenship test preparation, learning English-as-a-Second Language, Asset/Act test preparation, and work place literacy safety.

**West Central Missouri Multicultural Forum**, Pettis County Community Partnership, 827-0560

515 South Kentucky Ave. Brings people and area resources together to proactively (reactively if necessary) address issues relating to education, health and welfare, business and industry, law enforcement, government, transportation, and community service learning. The Forum usually meets at Tyson's Main Plant in Dresden, MO on the first Wednesday of March, June, September, and December. Small fee for lunch.

## Which agencies have Spanish-speaking translators on staff?

**Bothwell Regional Health Center**, 601 East 14<sup>th</sup> Street, [www.brhc.org](http://www.brhc.org) 826-8833

**Children's Therapy Center**, 600 East 14<sup>th</sup> Street, [www.chs-mo.org](http://www.chs-mo.org) 827-4400  
Missouri First Steps 827-5004

**Pettis County Early Childhood Cooperative**, 2255 S. Ingram, 827-8955  
Parents As Teachers, Title 1 Preschool, and Early Childhood Special Education Services.

**Pettis County Health Center**, 911 East 16<sup>th</sup> Street, [www.pettis.lphamo.org](http://www.pettis.lphamo.org) 827-1130

Pettis County Health Center is a local public health agency that is supported by local taxes, by reimbursement from federal and state programs and by a sliding fee-for-service scale based on household income. Available services include general health and wellness screens, communicable disease control activities including immunizations, numerous child and adolescent health/safety programs, women's health services, WIC (Women, Infants, and Children) Food

Supplement Program, and environmental public health services. Certified Copies of Birth and Death certificates are available in the office for a fee, but only if the birth or death occurred in Missouri. It is the policy of Pettis County Health Center to provide equal services to all applicants without regard to race, color, religion, gender, age, national origin, political belief, veteran status, and physical or mental disability.

**Katy Tail Community Health**, 821 Westwood,

826-4774

**Sedalia Housing Authority**, 500 Welch Court,

827-1400

Provides low-income housing, library and computer lab with internet access available for use by residents, CASA office on-site, and Head Start-Buckner Court.

## Where do I call to get my utilities turned on?

**AT & T Telephone**, Customer Service,

800-464-7928

**Central MO Electric Co-op**, County Residents, 22702 North Highway 65,

826-2900

**Empire District Gas Co.**, Customer Service,

800-424-0427

**Kansas City Power & Light**, Customer Service, (816) 471-5275 or 888-471-5275. Emergency Service 888-544-4852

**Sedalia Water Department**, 111 West 4<sup>th</sup> Street,

826-1234 Emergency Service: 826-1236

## Where can I get help with my utilities?

**American Red Cross**, 112 West 4<sup>th</sup> Street, [www.redcross.org](http://www.redcross.org)

827-0618

Non-profit, humanitarian organization led by volunteers that provides relief to victims of disasters and helps military personnel, veterans and their dependents. The chapter sponsors hospital volunteers, first aid, CPR and swimming lessons, lifeguard training and HIV-AIDS educational programs, and community blood drives. Also provides emergency assistance to families in crisis.

**Family Support Division**, 808 Westwood Avenue,

530-5900

Financial assistance and food stamps for those who qualify. Health insurance if meet certain income guidelines.

**Missouri Valley Community Action Agency**, 505 South Kentucky, [www.mvcaa.net](http://www.mvcaa.net)

826-0804

**MVCAA Administrative Office**, 1415 South Odell, Marshall, MO 65340,

886-7476

Provides Section 8 Rental Assistance, Emergency Services-rent, Weatherization, Housing Partnership, Head Start, Adult/Family Literacy, and Career Services. **Head Start**, 314 South Washington, 826-0651, 353 Buckner Court.

**Open Door Benevolent Ministries**, 111 West 6<sup>th</sup> Street,

827-1613

Food Pantry and Community-Oriented Builder gives assistance to poverty-level individuals and agencies in the county. Limited emergency financial assistance available to qualifying applicants.

**Pettis County Fund for Frail & Elderly**, 808 Westwood Avenue,

530-5525

Housing assistance for qualifying seniors and assistance for purchasing prescription medication.

### **Salvation Army**

Community Center, 1200 E. Broadway, 826-1525,

Social Services, 1200 E. Broadway, 826-1525,

Thrift Store, 1305 S. Limit, 826-4769,

Thrift Store, 601 S. Ohio, 826-5553.

For those who qualify the following services are available: food assistance is available once a month, rental assistance, referrals to homeless shelters, and prescription assistance. Also provides soup kitchen Monday–Friday from 12:00–1:00 at 1200 E. Broadway. Also has cooperative Summer Feeding Program, clothing vouchers for qualifying applicants, and more available through main office at 1200 E. Broadway.

## Where can I get help with transportation?

**THE BUS –Community Transportation Partnership**, 2501 West Main Street, 827-2611  
Anyone can ride THE BUS. Monday – Friday 6:30 a.m. until 6:25 p.m. Saturday – 8:30 a.m. until 4:25 p.m. Cost is \$1.25 one way. For more information or a bus schedule please call 827-2611.

**Medical Ride Program**, RSVP. Pettis County Community Partnership, 515 South Kentucky, 826-4212  
**Medical rides only** provided on minimum donation basis. By appointment at least 4 days in advance of appointment.

**OATS Transportation Service**, 2501 W. Main Street, 827-2611

**Pettis County Fund for the Frail Elderly**, 808 Westwood, 530-5525

**Sedalia Senior Center/District III Area Agency on Aging**, 312 South Washington, 826-0713

## Alphabetical Listing

<b>@Work Personnel Services</b>	1710 West 9 <sup>th</sup> Street	826-9300
<b>Adoption Line and Foster Care</b>		800-544-2222
<b>Alcoholics Anonymous</b>	417 West Pettis	829-2527
<b>Alzheimer's Support Group</b>	601 East 14 <sup>th</sup> Street	826-8367
<b>Alzheimer's Support Group</b>	706 South Mitchell	429-2177
<b>American Heart Association</b>		800-323-7883
<b>American Red Cross</b>	112 West 4 <sup>th</sup> Street	827-0618
<b>Amigos de Cristo</b>	11 <sup>th</sup> & Thompson Boulevard	826-2788
<b>Area Agency on Aging</b>	312 S. Washington	827-0713
<b>Arson Hot Line</b>	Fire Marshal	800-392-7766
<b>Arthritis Support Group</b>	601 East 14 <sup>th</sup> Street	827-3824
<b>AT &amp; T Telephone</b>	Customer Service	800-464-7928
<b>Auto Safety Hot Line</b>	National Highway Traffic Safety Recall Information	800-424-9393
<b>Battered Women Hotline</b>		800-333-7233
<b>Birthright</b>	1810 West 11 <sup>th</sup> Street	826-9060 or 1-800-550-4900 24 hrs
<b>Boonslick Regional Library</b>	219 West 3 <sup>rd</sup> Street	827-7111
<b>Bothwell Regional Health Center Hospice</b>	3143 W. Broadway	829-2700
<b>Bothwell Regional Health Center</b>	601 East 14 <sup>th</sup> Street	826-8833
<b>Boys' &amp; Girls Club of Sedalia</b>	314 South Washington	826-8331
<b>Buckner Head Start Preschool Program</b>	358 Buckner Court	826-9931
<b>Bureau of Child Care</b>	P.O. Box 320, Warrensburg, MO 64093	660-747-2751
<b>Burrell Behavioral Health</b>	201 West 3 <sup>rd</sup>	827-2494
<b>C.A.C.T.U.S. Community and Children Teaming Up for Success</b>		827-0263
<b>Cancer Support Group—High Hopes</b>	601 East 14 <sup>th</sup> Street	829-8835
<b>Center for Human Services (CHS)</b>	1500 Ewing Drive	826-4400
<b>Central Missouri Regional Center</b>	818 Westwood	530-5700
<b>Central MO Electric Co-op</b>	22702 North Highway 65	826-2900
<b>Central States Mental Health Consultants</b>	108 West 5 <sup>th</sup> Street	827-0019
<b>Child Care Aware</b>		866-892-3228
<b>Child Safe of Central Missouri, Inc.</b>	102 East 10 <sup>th</sup> Street	829-3434 or 888-829-3434
<b>Child Support Enforcement</b>		800-859-7999
<b>Children's Division</b>	808 Westwood	530-5900
<b>Children's Therapy Center</b>	4515 W. Main	827-4400
<b>Citizens Against Spouse Abuse (CASA)</b>		827-5555 or 800-894-1151
<b>City Union Mission</b>		(816) 474-9380
<b>Communicable Disease</b>	Dept. of Health	800-392-0272
<b>Community Counseling Services</b>	1721 S. Ingram	827-9875

<b>Consumer Hot Line</b>	MO Attorney General's Office	800-392-8222
<b>Council on Disabilities</b>		800-877-8249
<b>Dental Hygiene Clinic at State Fair</b>	3201 West 16th Street	596-7406
<b>Community College</b>		
<b>DMV-Department of Motor Vehicle</b>	3135 West Broadway	826-3316
<b>Diversified Staffing</b>	1400 South Limit	826-4862
<b>Driver's Training</b>		826-9228
<b>EBT Helpline</b>		800-997-7777
<b>Embassy</b>		281-3211
<b>Empire District Gas Co.</b>	Customer Service	800-424-0427
<b>Employment of People with Disabilities</b>	Governor's Committee	800-877-8249
<b>Experience Works – Senior Workforce Solutions</b>	P.O. Box 188	800-368-7569
<b>Faith House</b>		800-801-7883
<b>Family Child Care Association</b>		826-8437
<b>Family Support Division</b>	808 Westwood Avenue	530-5900
<b>First Baptist Church</b>	200 East 6 <sup>th</sup> Street	826-2160
<b>First United Methodist Celebration Center</b>	1701 West 32 <sup>nd</sup> Street	827-2993
<b>Grief Support Group</b>	8143 W. Broadway	829-2700
<b>Habitat for Humanity</b>	P.O. Box 1523	827-5162
<b>Harbor House</b>	602 North Ann	(573) 442-1984
<b>Harvest House</b>		882-3286
<b>Highway Patrol Road Conditions</b>		800-222-6400
<b>House of Hope</b>		259-4766
<b>HUD- Federal Agency-Discrimination</b>	Fair Housing & Equal Opportunity Hot Line	800-669-9777
<b>Kansas City Power and Light</b>	Customer Service	(816) 471-5275 or 888-471-5275
<b>Katy Tail Community Health</b>	821 Westwood	826-4774
<b>Kitto, Gary C. Dr. &amp; Associates</b>	100 South Limit	826-7909
<b>Lee's Taxi Service</b>	3520 South Park	827-2701
<b>Legal Aid of Western Missouri (non criminal matters)</b>		800-892-2943
<b>Lighthouse</b>		831-0988
<b>Literacy Center</b>	515 South Kentucky	827-0560
<b>Meals on Wheels</b>	2311 West Main	826-5039
<b>Medical Ride Program</b>		
RSVP Program	515 South Kentucky	826-4212
<b>Mefford, Vuagniaux &amp; Associates PC</b>	121 East Broadway	826-2380
<b>Missouri Tourism</b>		
<b>Missouri Valley Community Action Agency</b>	505 South Kentucky	826-0804
<b>MO HealthNet for Kids</b>		888-275-5908
<b>MRCC Food Co-op</b>	515 South Kentucky	827-0560
<b>MVCAA Administrative Office</b>	1415 South Odell	886-7476
<b>NAMI Mental Health Support Group</b>	2601 Wesley Court	827-2514
<b>New Attitudes Weight Loss Support Group</b>	3201 Southwest Boulevard	827-5898
<b>New Haven</b>	P.O. Box 2311	826-8673
<b>New Hope Baptist Church</b>	664 East 16 <sup>th</sup> Street	826-6277

<b>OATS Transportation Service</b>	2501 W. Main Street	827-2611
<b>Open Door Benevolent Ministries</b>	111 West 6 <sup>th</sup> Street	827-1613
<b>OSHA</b>		Kansas City Area 800-892-2674 St. Louis Area 800-392-7743 800-552-8522 735-2966
<b>Parent Link</b>		
<b>Parents as Teachers</b>	2255 S. Ingram	827-8955
<b>Parkview Christian Church</b>	1405 East 16 <sup>th</sup> Street	826-3624
<b>Pathways</b>	1400 South Limit Suite 9	826-5885
<b>Pettis County Early Childhood Cooperative</b>	2255 S. Ingram	827-8955
<b>Pettis County Fund for the Frail Elderly</b>	808 Westwood	530-5525
<b>Pettis County Health Center</b>	911 East 16 <sup>th</sup> Street	827-1130
<b>Prescription Drug Drop Off</b>	319 S. Lamine Ave	827-0052
<b>Primera Iglesia Bautista</b>	201 East 6 <sup>th</sup> Street	826-0621
<b>Psychological Consultants of Sedalia</b>	3001 Clinton Road	829-1133
<b>Public Service Commission</b>	Utility Complaints	800-392-4211
<b>Putting Roofs Over People (PROP)</b>	515 South Kentucky	827-0560
<b>Recovery Lighthouse</b>	417 W. Pettis St.	827-HELP
<b>“ROC” Reentry Opportunity Center</b>	515 S. Kentucky	827-0560
<b>Retired Senior Volunteer Program—RSVP</b>	515 S. Kentucky	827-0560
<b>Rx Outreach</b>		1-800-769-3880
<b>Sabados Latinos</b>		800-748-8354 or 826-1050 826-1525
<b>Salvation Army</b>	1200 East Broadway	
<b>Salvation Army Center of Hope</b>		(573) 635-1975
<b>Transient Housing</b>		
<b>Salvation Army Thrift Store</b>	1305 South Limit	826-4769
<b>Salvation Army Thrift Store</b>	601 South Ohio	826-5553
<b>Sedalia Area Literacy Council</b>	515 South Kentucky	827-0560
<b>Sedalia Housing Authority</b>	500 Welch Court	827-1400
<b>Sedalia Public Library</b>	311 West 3 <sup>rd</sup> Street	826-1314
<b>Sedalia School District #200</b>	2806 Matthew Drive	829-6450
<b>Sedalia Senior Center/District III</b>	312 South Washington	826-0713
<b>Area Agency on Agency</b>		
<b>Sedalia Senior Services/Pettis County</b>	808 Westwood	530-5525
<b>Sedalia Water Department</b>	111 West 4 <sup>th</sup> Street	826-1234
<b>Senior and Disability Services/Pettis County Fund for Frail &amp; Elderly</b>	808 Westwood	530-5525
<b>SIDS (Sudden Infant Death Syndrome) Resources</b>		800-421-3511
<b>Social Security Administration</b>	3320 West 10 <sup>th</sup> Street	827-4709 or 800-772-1213
<b>St. Patrick’s Catholic Church</b>	415 East 4 <sup>th</sup> Street	826-2062
<b>State Fair Community College Adult</b>	3201 West 16 <sup>th</sup> Street	530-5815

<b>Basic Education Stroke Survivors Support Group</b>	601 East 14 <sup>th</sup> Street	827-9136
<b>Tel-Link</b>		800-TEL-LINK 800835-5465-
<b>THE BUS– Community Transportation Partnership</b>	2501 West Main Street	827-2611
<b>The Missouri Multicultural Network</b>	<a href="http://www.mssc.edu/missouri/">http://www.mssc.edu/missouri/</a>	
<b>The One Stop Missouri Career Center</b>	215 East 5 <sup>th</sup> Street	530-5627
<b>The President’s Committee for Employment of Persons with Disabilities</b>		(202) 653-5044
<b>There is Hope Christian Ministries</b>	660 East 16 <sup>th</sup> Street	826-1225
<b>TOPS Chapter No. 958</b>	200 East 6 <sup>th</sup> Street	826-2160
<b>University of Central Missouri</b>		(660) 543-8321
<b>University of Missouri Extension/Lincoln University</b>	1012 A Thompson Boulevard	827-0591
<b>University of Missouri School of Dentistry</b>		(816) 235-2100
<b>Veterans’ Administration</b>		800-827-1000
<b>Vocational Rehabilitation</b>	2115 West Broadway	530-5560
<b>Waldo, Dr. Susan</b>	103 East 4 <sup>th</sup> Street	826-0440
<b>Washington Neighborhood Caring Communities</b>		829-4223
<b>West Central Missouri Multicultural Forum</b>	515 South Kentucky	827-0560
<b>WILS -West-Central Independent Living Solutions</b>	1018-B Thompson Boulevard	829-1980
<b>Workforce Development Board, Inc. of Western Missouri</b>	3208 W. 16 <sup>th</sup> Street	827-3722

## WHERE CAN I FIND. . . ?

<b><u>COUNSELING</u></b>	<b><u>p. 10</u></b>	<b><u>INTERNET ACCESS</u></b>	<b><u>p. 13</u></b>
<b><u>CRISIS HELP</u></b>	<b><u>p. 9</u></b>		
<b><u>DISABILITY SERVICES</u></b>	<b><u>p. 13</u></b>	<b><u>MEDICAL SERVICES</u></b>	<b><u>p. 16</u></b>
<b><u>EDUCATION</u></b>	<b><u>p. 12</u></b>	Bothwell Regional Health	826-8833
<b><u>EMPLOYMENT</u></b>	<b><u>p. 14</u></b>	Central MO Regional Center	530-5700
<b><u>EMERGENCY NUMBERS</u></b>	<b><u>p. 6</u></b>	Katy Trails Health Clinic	826-4774
		Pettis County Health Center	827-1130
		Salvation Army	826-1525
<b><u>FOOD ASSISTANCE</u></b>	<b><u>p. 15</u></b>		
Family Support Division	530-5900	<b><u>MULTICULTURAL SERVICES</u></b>	<b><u>p. 18</u></b>
Meals on Wheels	826-5039	Literacy Center	827-0560
Open Door Ministries	827-1613	Sabados Latinos	826-1050
Pettis County Health Center	827-1130	SFCC Adult Basic Education	530-5815
Salvation Army	826-1525	West Central Mo Forum	827-0560
Sedalia Senior Center	826-0713		
<b><u>GOVERNMENT CITY OFFICES</u></b>	<b><u>p. 6</u></b>	<b><u>MULTICULTURAL CHURCHES</u></b>	<b><u>p. 17</u></b>
<b><u>COUNTY OFFICES</u></b>	<b><u>p. 7</u></b>		
<b><u>STATE &amp; FEDERAL OFFICES</u></b>	<b><u>p. 8</u></b>	<b><u>SENIOR SERVICES</u></b>	<b><u>p. 17</u></b>
<b><u>HOMELESS SHELTERS</u></b>	<b><u>p. 15</u></b>	<b><u>SUPPORT GROUPS</u></b>	<b><u>p. 11</u></b>
CASA	827-5555	<b><u>TRANSLATORS ON STAFF</u></b>	<b><u>p. 18</u></b>
The Embassy	281-3211		
Faith House	800-801-7883	<b><u>TRANSPORTATION</u></b>	<b><u>p. 19</u></b>
Harbor House	(573) 442-1984	The Bus	827-2611
Harvest House	882-3286	Medical Ride Program	826-4212
House of Hope	259-4766	OATS	827-2611
Lighthouse	831-1998	Sedalia Cab Company	827-0469
Salvation Army	(573) 635-1975	Sedalia Senior Center	826-0713
<b><u>HOUSING ASSISTANCE</u></b>	<b><u>p. 14</u></b>	<b><u>UTILITY COMPANIES</u></b>	<b><u>p. 19</u></b>
American Red Cross	827-0618	<b><u>UTILITIES ASSISTANCE</u></b>	<b><u>p. 19</u></b>
CASA	827-5555	American Red Cross	827-0618
Habitat for Humanity	827-5162	Family Support Division	530-5900
Missouri Valley CAA	826-0804	Missouri Valley CAA	826-0804
P.R.O.P.	827-0560	Open Door Ministries	827-1613
Salvation Army	826-1525	Salvation Army	826-3119
Sedalia Housing Authority	827-1400		
Seven Cedars Housing	527-3715		
There is Hope	826-1225		
The Embassy	281-3211		



# Community Health Needs Assessment

## 2012 County Data Profile



### PETTIS County

	Pettis County	95% Confidence Interval	National Benchmark*	Missouri	Data Source, Year
<b>DEMOGRAPHICS</b>					
Population	41,421			5,987,580	U.S. Census Bureau, 2009
Less than 18 years of age	25.7%			23.9%	U.S. Census Bureau, 2009
65 years of age and older	15.2%			13.7%	U.S. Census Bureau, 2009
African American	3.1%			11.2%	U.S. Census Bureau, 2009
American Indian/Alaskan Native	0.6%			0.3%	U.S. Census Bureau, 2009
Asian	0.8%			1.5%	U.S. Census Bureau, 2009
Native Hawaiian/Other Pacific Islander	0.1%			0.1%	U.S. Census Bureau, 2009
Hispanic	8.0%			3.4%	U.S. Census Bureau, 2009
Not proficient in English	3.1%			2.2%	American Community Survey 5-Year Estimates, 2009
Female	50.8%			51.1%	U.S. Census Bureau, 2009
Rural	38.2%			30.6%	U.S. Census Bureau, 2009
<b>HEALTH OUTCOMES</b>					
<i>Mortality</i>					
Premature death (years of potential life lost)	7,463.2	6,557.2 - 8,369.2	5,466	7,981	Vital Statistics, National Center for Health Statistics, 2006-2008
<i>Morbidity</i>					
Poor or fair health	19.5%	14.2 - 26.2%	10%	16%	Behavioral Risk Factor Surveillance System, 2004-2010
Poor physical health days/ previous 30 days	3.7	2.6 - 4.7	2.6	3.6	BRFSS, 2004-2010
Poor mental health days/ previous 30 days	5.2	3.6 - 6.8	2.3	3.7	BRFSS, 2004-2010
Low birthweight**	7.5%	6.7 - 8.3%	6%	8.1%	Vital Statistics, NCHS, 2002-2008
<b>HEALTH FACTORS</b>					
<i>Health Behaviors</i>					
Adult smoking	27.6%	21.0 - 35.4%	14%	23.5%	BRFSS, 2004-2010
Adult obesity	29.4%	24.0 - 35.3%	25%	31.1%	National Center for Chronic Disease Prevention and Health Promotion, calculated from BRFSS, 2009
Physical inactivity	32.9%	26.6 - 39.4%	21%	27.7%	National Center for Chronic Disease Prevention and Health Promotion, calculated from BRFSS, 2009
Excessive drinking	13.0%	8.5 - 19.2%	8%	17%	BRFSS, 2004-2010
Motor vehicle crash death rate per 100,000	21.7	16.3 - 27.1	12	19.5	Vital Statistics, NCHS, 2002-2008
Sexually transmitted infections (chlamydia per 100,000)	412.1		84	437.6	Centers for Disease Control, National Center for Hepatitis, HIV, STD and TB Prevention, 2009
Teen birth rate (per 1,000, ages 15-19)	65.9	60.7 - 71.0	22	44.3	Vital Statistics, NCHS, 2002-2008
HIV rate per 100,000	72.0			225.7	CDC, National Center for Hepatitis, HIV, STD and TB Prevention, 2008

continued ►

\* 90th percentile, i.e., only 10% are better

Note: Blank or \*\* values may reflect unreliable or missing data.

Source: University of Wisconsin, Population Health Institute and Robert Wood Johnson Foundation (2012), data files retrieved from [www.countyhealthrankings.org](http://www.countyhealthrankings.org)

	Pettis County	95% Confidence Interval	National Benchmark*	Missouri	Data Source, Year
<b>HEALTH FACTORS</b> <i>continued</i>					
<b>Clinical Care</b>					
Preventable hospital stays rate (per 1,000 Medicare enrollees)	98.4	90.1 - 106.6	49	75	Medicare claims/Dartmouth Atlas, 2009
Diabetic screening (HbA1c for diabetic Medicare enrollees)	78.9%	71.3 - 86.4%	89%	83.5%	Medicare claims/Dartmouth Atlas, 2009
Diagnosed with diabetes	9.3%	7.0 - 12.0%		9.6%	CDC, Small Area Obesity Estimates, 2009
Mammography screening for Medicare enrollees	60.3%	52.6 - 67%	74%	64.6%	Medicare claims/Dartmouth Atlas, 2009
<b>Access</b>					
Uninsured (population < 65 years of age)	19.0%	17.2 - 20.8%	11%	15.2%	Census/ACS—Small Area Health Insurance Estimates, 2009
Could not see a doctor due to cost	21.1%			13.9%	BRFSS, 2004-2010
Primary care physician ratio	1,711:1		631:1	1,015:1	Health Resources and Services Administration, Area Resource File, 2009
Mental health provider ratio	41,065:0			9,561:1	HRSA, ARF, 2007
Dentist ratio	2,945:1			3,198:1	HRSA, ARF, 2007
Health care costs (Medicare costs per beneficiary)	\$8,336			\$9,463	HRSA, ARF, 2007
<b>Social and Economic Factors</b>					
High school graduate	93.0%			85.7%	State sources and the National Center for Education Statistics, varies by state, 2008-2009 or 2009-2010
Some college	52.8%	48.2 - 57.5%	68%	60.8%	ACS, 2006-2010
Illiteracy	8.3%	4.0 - 15.1%		7.5%	National Center for Education Statistics, National Assessment of Adult Literacy, 2003
Median household income	\$36,882	\$33,087 - 40,677		\$44,306	Small Area Income and Poverty Estimates, 2010
High housing costs	29.1%			29.2%	ACS 5-Year Estimates, 2006-2010
Unemployment	8.9%		5.4%	9.6%	Local Area Unemployment Statistics, Bureau of Labor Statistics, 2010
Children in poverty	24.5%	17.5 - 31.5%	13%	21%	Census/Current Population Survey—SAIPE, 2010
Children eligible for free lunch	46.5%			39.3%	United States Department of Agriculture Food Environmental Atlas, 2006
Inadequate social support	21.2%	14.5 - 29.9%	14%	19.4%	BRFSS, 2004-2010
Children in single-parent households	27.5%	22.3 - 32.8%	20%	32.3%	ACS, 2006-2010
Violent crime rate per 100,000	524.7		73	518.5	Uniform Crime Reporting, Federal Bureau of Investigation - State data sources for Illinois, 2007-2009
Homicide rate per 100,000				6.8	National Center for Health Statistics, 2002-2008
<b>Physical Environment</b>					
Air pollution-particulate matter days/days that exceed maximum average per year	0.0		0	0	CDC-Environmental Protection Agency Collaboration. Data not available for Alaska and Hawaii, 2007
Air pollution-ozone days/days that exceed maximum average per year	0.0		0	7	CDC-EPA Collaboration. Data not available for Alaska and Hawaii, 2007
Labor force who drive alone to work	78.2%			80.7%	ACS 5-Year Estimates, 2006-2010
Access to recreational facilities per 100,000	14.5		16	10	Census County Business Patterns, 2009
Limited access to healthy foods	0.9%		0%	7.8%	USDA Food Environmental Atlas
Fast food restaurants	49.2%		25%	47.4%	Census County Business Patterns, 2009

\* 90th percentile, i.e., only 10% are better

Source: University of Wisconsin, Population Health Institute and Robert Wood Johnson Foundation (2012), data files retrieved from [www.countyhealthrankings.org](http://www.countyhealthrankings.org)

Note: Blank or \*\* values may reflect unreliable or missing data.

# Community Health Needs Assessment

## 2012 County Data Profile



### BENTON County

	Benton County	95% Confidence Interval	National Benchmark*	Missouri	Data Source, Year
<b>DEMOGRAPHICS</b>					
Population	18,461			5,987,580	U.S. Census Bureau, 2009
Less than 18 years of age	18.4%			23.9%	U.S. Census Bureau, 2009
65 years of age and older	25.6%			13.7%	U.S. Census Bureau, 2009
African American	0.5%			11.2%	U.S. Census Bureau, 2009
American Indian/Alaskan Native	0.5%			0.3%	U.S. Census Bureau, 2009
Asian	0.1%			1.5%	U.S. Census Bureau, 2009
Native Hawaiian/Other Pacific Islander	0.0%			0.1%	U.S. Census Bureau, 2009
Hispanic	1.2%			3.4%	U.S. Census Bureau, 2009
Not proficient in English	0.5%			2.2%	American Community Survey 5-Year Estimates, 2009
Female	50.8%			51.1%	U.S. Census Bureau, 2009
Rural	100.0%			30.6%	U.S. Census Bureau, 2009
<b>HEALTH OUTCOMES</b>					
<i>Mortality</i>					
Premature death (years of potential life lost)	9,830.4	8,144.5 - 11,516.3	5,466	7,981	Vital Statistics, National Center for Health Statistics, 2006-2008
<i>Morbidity</i>					
Poor or fair health	17.8%	11.9 - 25.9%	10%	16%	Behavioral Risk Factor Surveillance System, 2004-2010
Poor physical health days/previous 30 days	3.8	2.6 - 5.0	2.6	3.6	BRFSS, 2004-2010
Poor mental health days/previous 30 days	2.8	0.9 - 4.7	2.3	3.7	BRFSS, 2004-2010
Low birthweight**	7.4%	5.9 - 8.9%	6%	8.1%	Vital Statistics, NCHS, 2002-2008
<b>HEALTH FACTORS</b>					
<i>Health Behaviors</i>					
Adult smoking	19.2%	12.6 - 28.0%	14%	23.5%	BRFSS, 2004-2010
Adult obesity	32.4%	25.6 - 39.5%	25%	31.1%	National Center for Chronic Disease Prevention and Health Promotion, calculated from BRFSS, 2009
Physical inactivity	32.8%	25.3 - 40.7%	21%	27.7%	National Center for Chronic Disease Prevention and Health Promotion, calculated from BRFSS, 2009
Excessive drinking	17.3%	9.8 - 28.7%	8%	17%	BRFSS, 2004-2010
Motor vehicle crash death rate per 100,000	30.3	20.8 - 39.9	12	19.5	Vital Statistics, NCHS, 2002-2008
Sexually transmitted infections (chlamydia per 100,000)	158.0		84	437.6	Centers for Disease Control, National Center for Hepatitis, HIV, STD and TB Prevention, 2009
Teen birth rate (per 1,000, ages 15-19)	49.3	42.1 - 56.4	22	44.3	Vital Statistics, NCHS, 2002-2008
HIV rate per 100,000	49.4			225.7	CDC, National Center for Hepatitis, HIV, STD and TB Prevention, 2008

continued ►

\* 90th percentile, i.e., only 10% are better

Note: Blank or \*\* values may reflect unreliable or missing data.

Source: University of Wisconsin, Population Health Institute and Robert Wood Johnson Foundation (2012), data files retrieved from [www.countyhealthrankings.org](http://www.countyhealthrankings.org)

	Benton County	95% Confidence Interval	National Benchmark*	Missouri	Data Source, Year
<b>HEALTH FACTORS</b> <i>continued</i>					
<b>Clinical Care</b>					
Preventable hospital stays rate (per 1,000 Medicare enrollees)	83.2	72.9 - 93.5	49	75	Medicare claims/Dartmouth Atlas, 2009
Diabetic screening (HbA1c for diabetic Medicare enrollees)	83.8%	75.4 - 92.2%	89%	83.5%	Medicare claims/Dartmouth Atlas, 2009
Diagnosed with diabetes	12.7%	9.6 - 16.5%		9.6%	CDC, Small Area Obesity Estimates, 2009
Mammography screening for Medicare enrollees	58.8%	49.6 - 67%	74%	64.6%	Medicare claims/Dartmouth Atlas, 2009
<b>Access</b>					
Uninsured (population < 65 years of age)	19.6%	17.7 - 21.5%	11%	15.2%	Census/ACS—Small Area Health Insurance Estimates, 2009
Could not see a doctor due to cost	12.7%			13.9%	BRFSS, 2004-2010
Primary care physician ratio	3,089:1		631:1	1,015:1	Health Resources and Services Administration, Area Resource File, 2009
Mental health provider ratio	18,534:0			9,561:1	HRSA, ARF, 2007
Dentist ratio	6,341:1			3,198:1	HRSA, ARF, 2007
Health care costs (Medicare costs per beneficiary)	\$9,118			\$9,463	HRSA, ARF, 2007
<b>Social and Economic Factors</b>					
High school graduate	81.2%			85.7%	State sources and the National Center for Education Statistics, varies by state, 2008-2009 or 2009-2010
Some college	41.8%	33.5 - 50.2%	68%	60.8%	ACS, 2006-2010
Illiteracy	9.4%	4.5 - 17.1%		7.5%	National Center for Education Statistics, National Assessment of Adult Literacy, 2003
Median household income	\$30,920	\$28,120 - 33,720		\$44,306	Small Area Income and Poverty Estimates, 2010
High housing costs	23.1%			29.2%	ACS 5-Year Estimates, 2006-2010
Unemployment	10.6%		5.4%	9.6%	Local Area Unemployment Statistics, Bureau of Labor Statistics, 2010
Children in poverty	35.1%	25.4 - 44.8%	13%	21%	Census/Current Population Survey—SAIPE, 2010
Children eligible for free lunch	47.3%			39.3%	United States Department of Agriculture Food Environmental Atlas, 2006
Inadequate social support	17.0%	10.6 - 26.0%	14%	19.4%	BRFSS, 2004-2010
Children in single-parent households	25.0%	17.2 - 32.8%	20%	32.3%	ACS, 2006-2010
Violent crime rate per 100,000	376.3		73	518.5	Uniform Crime Reporting, Federal Bureau of Investigation - State data sources for Illinois, 2007-2009
Homicide rate per 100,000				6.8	National Center for Health Statistics, 2002-2008
<b>Physical Environment</b>					
Air pollution-particulate matter days/days that exceed maximum average per year	0.0		0	0	CDC-Environmental Protection Agency Collaboration. Data not available for Alaska and Hawaii, 2007
Air pollution-ozone days/days that exceed maximum average per year	0.0		0	7	CDC-EPA Collaboration. Data not available for Alaska and Hawaii, 2007
Labor force who drive alone to work	81.2%			80.7%	ACS 5-Year Estimates, 2006-2010
Access to recreational facilities per 100,000	5.4		16	10	Census County Business Patterns, 2009
Limited access to healthy foods	13.2%		0%	7.8%	USDA Food Environmental Atlas
Fast food restaurants	13.3%		25%	47.4%	Census County Business Patterns, 2009

\* 90th percentile, i.e., only 10% are better

Source: University of Wisconsin, Population Health Institute and Robert Wood Johnson Foundation (2012), data files retrieved from [www.countyhealthrankings.org](http://www.countyhealthrankings.org)

Note: Blank or \*\* values may reflect unreliable or missing data.



## Pettis (PT)

	Pettis County	Error Margin	Missouri	National Benchmark*	Rank (of 115)
<b>Health Outcomes</b>					<b>54</b>
<b>Mortality</b>					<b>28</b>
Premature death	7,338	6,443-8,233	7,827	5,317	
<b>Morbidity</b>					<b>80</b>
Poor or fair health	21%	16-28%	16%	10%	
Poor physical health days	4.0	2.9-5.1	3.7	2.6	
Poor mental health days	5.4	3.6-7.1	3.8	2.3	
Low birthweight	7.1%	6.4-7.9%	8.1%	6.0%	
<b>Health Factors</b>					<b>65</b>
<b>Health Behaviors</b>					<b>81</b>
Adult smoking	29%	21-37%	23%	13%	
Adult obesity	29%	24-35%	31%	25%	
Physical inactivity	33%	27-39%	28%	21%	
Excessive drinking	13%	8-20%	17%	7%	
Motor vehicle crash death rate	20	15-26	17	10	
Sexually transmitted infections	329		435	92	
Teen birth rate	60	56-65	42	21	
<b>Clinical Care</b>					<b>91</b>
Uninsured	20%	18-22%	15%	11%	
Primary care physicians**	2,348:1		1,495:1	1,067:1	
Dentists**	2,695:1		2,168:1	1,516:1	
Preventable hospital stays	90	82-98	73	47	
Diabetic screening	79%	71-87%	85%	90%	
Mammography screening	60%	53-68%	64%	73%	
<b>Social &amp; Economic Factors</b>					<b>56</b>
High school graduation**	91%		80%		
Some college	55%	50-60%	62%	70%	
Unemployment	8.3%		8.6%	5.0%	
Children in poverty	27%	21-33%	22%	14%	
Inadequate social support	21%	15-30%	19%	14%	
Children in single-parent households	27%	22-31%	33%	20%	
Violent crime rate	475		484	66	
<b>Physical Environment</b>					<b>37</b>
Daily fine particulate matter	10.1	10.0-10.2	10.6	8.8	
Drinking water safety	6%		5%	0%	
Access to recreational facilities	12		10	16	
Limited access to healthy foods**	6%		6%	1%	
Fast food restaurants	47%		47%	27%	

\* 90th percentile, i.e., only 10% are better.

\*\* Data should not be compared with prior years due to changes in definition.

Note: Blank values reflect unreliable or missing data

2013

**Benton (BT)**

	<b>Benton County</b>	<b>Error Margin</b>	<b>Missouri</b>	<b>National Benchmark*</b>	<b>Rank (of 115)</b>
<b>Health Outcomes</b>					<b>79</b>
<b>Mortality</b>					<b>93</b>
Premature death	9,680	7,867-11,493	7,827	5,317	
<b>Morbidity</b>					<b>44</b>
Poor or fair health	18%	11-28%	16%	10%	
Poor physical health days	4.0	2.7-5.3	3.7	2.6	
Poor mental health days	2.9	1.1-4.7	3.8	2.3	
Low birthweight	7.1%	5.7-8.6%	8.1%	6.0%	
<b>Health Factors</b>					<b>69</b>
<b>Health Behaviors</b>					<b>57</b>
Adult smoking	21%	14-30%	23%	13%	
Adult obesity	32%	26-40%	31%	25%	
Physical inactivity	33%	25-41%	28%	21%	
Excessive drinking	16%	9-27%	17%	7%	
Motor vehicle crash death rate	27	18-37	17	10	
Sexually transmitted infections	115		435	92	
Teen birth rate	49	42-56	42	21	
<b>Clinical Care</b>					<b>87</b>
Uninsured	20%	18-23%	15%	11%	
Primary care physicians**	2,389:1		1,495:1	1,067:1	
Dentists**	6,451:1		2,168:1	1,516:1	
Preventable hospital stays	85	75-95	73	47	
Diabetic screening	85%	77-93%	85%	90%	
Mammography screening	58%	50-66%	64%	73%	
<b>Social &amp; Economic Factors</b>					<b>89</b>
High school graduation**	89%		80%		
Some college	44%	36-52%	62%	70%	
Unemployment	10.1%		8.6%	5.0%	
Children in poverty	32%	23-42%	22%	14%	
Inadequate social support	17%	11-26%	19%	14%	
Children in single-parent households	22%	15-29%	33%	20%	
Violent crime rate	349		484	66	
<b>Physical Environment</b>					<b>4</b>
Daily fine particulate matter	9.9	9.8-10.0	10.6	8.8	
Drinking water safety	4%		5%	0%	
Access to recreational facilities	5		10	16	
Limited access to healthy foods**	2%		6%	1%	
Fast food restaurants	13%		47%	27%	

\* 90th percentile, i.e., only 10% are better.

\*\* Data should not be compared with prior years due to changes in definition.

Note: Blank values reflect unreliable or missing data

2013